
Toro Park Pilot Project

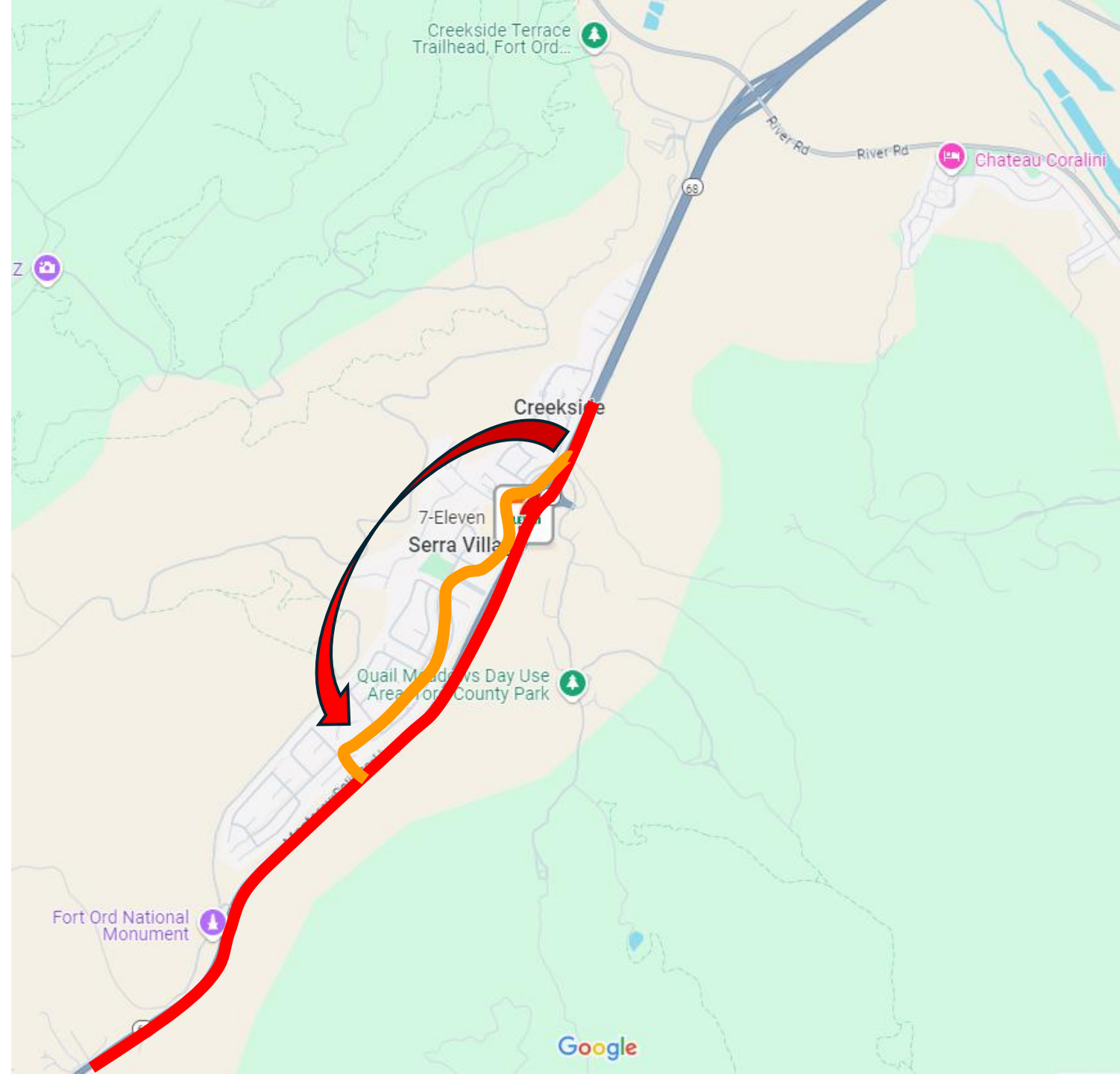


Doug Bilse, TE
Project Manager



Toro Park Pilot Project

Severe Hwy 68
Congestion=
Cut-Thru Traffic



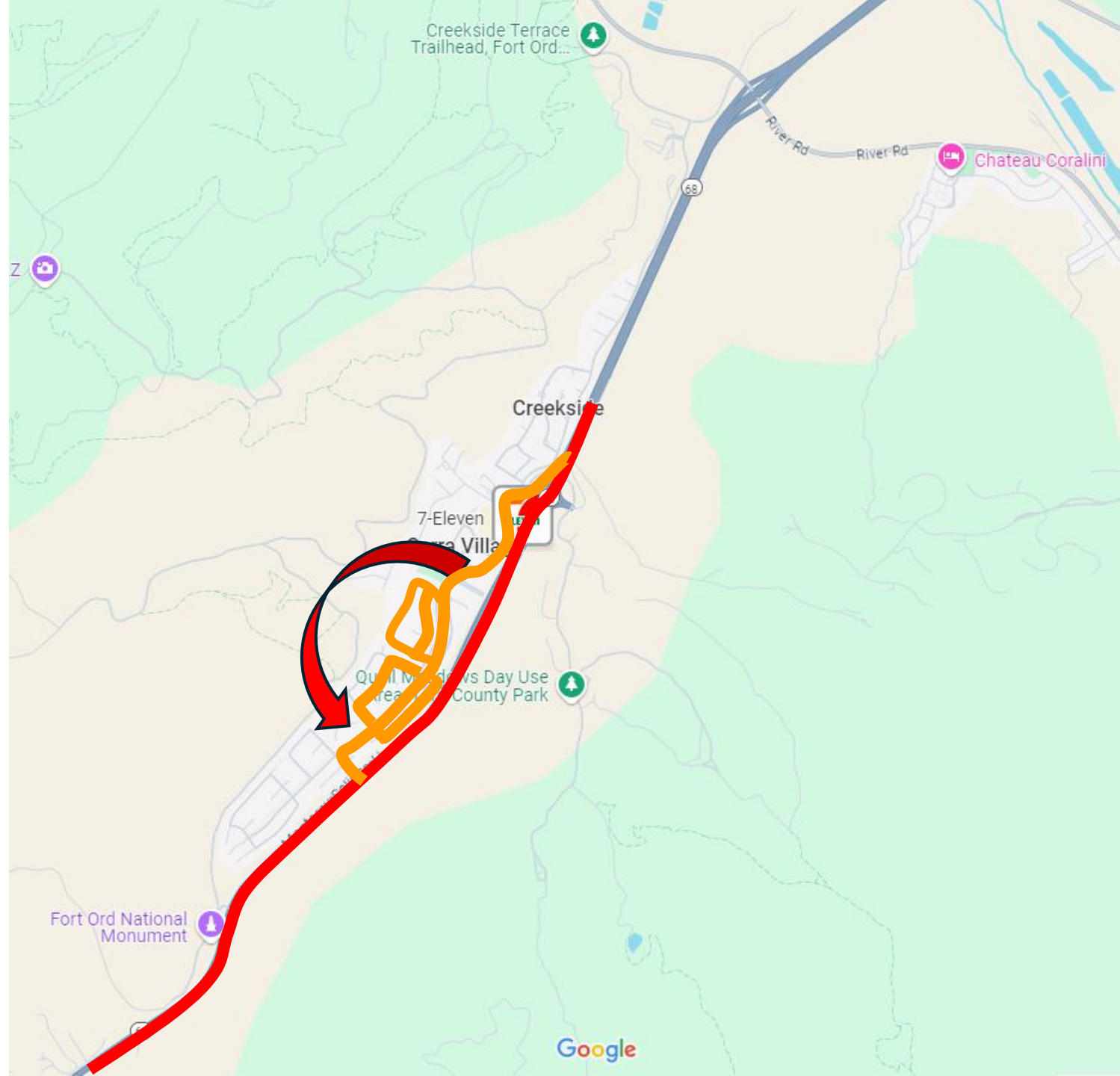


Portola Drive Cut-Through Traffic



Toro Park Pilot Project

Severe Portola
Congestion=
Cut-Thru
Cut-Thru
Traffic





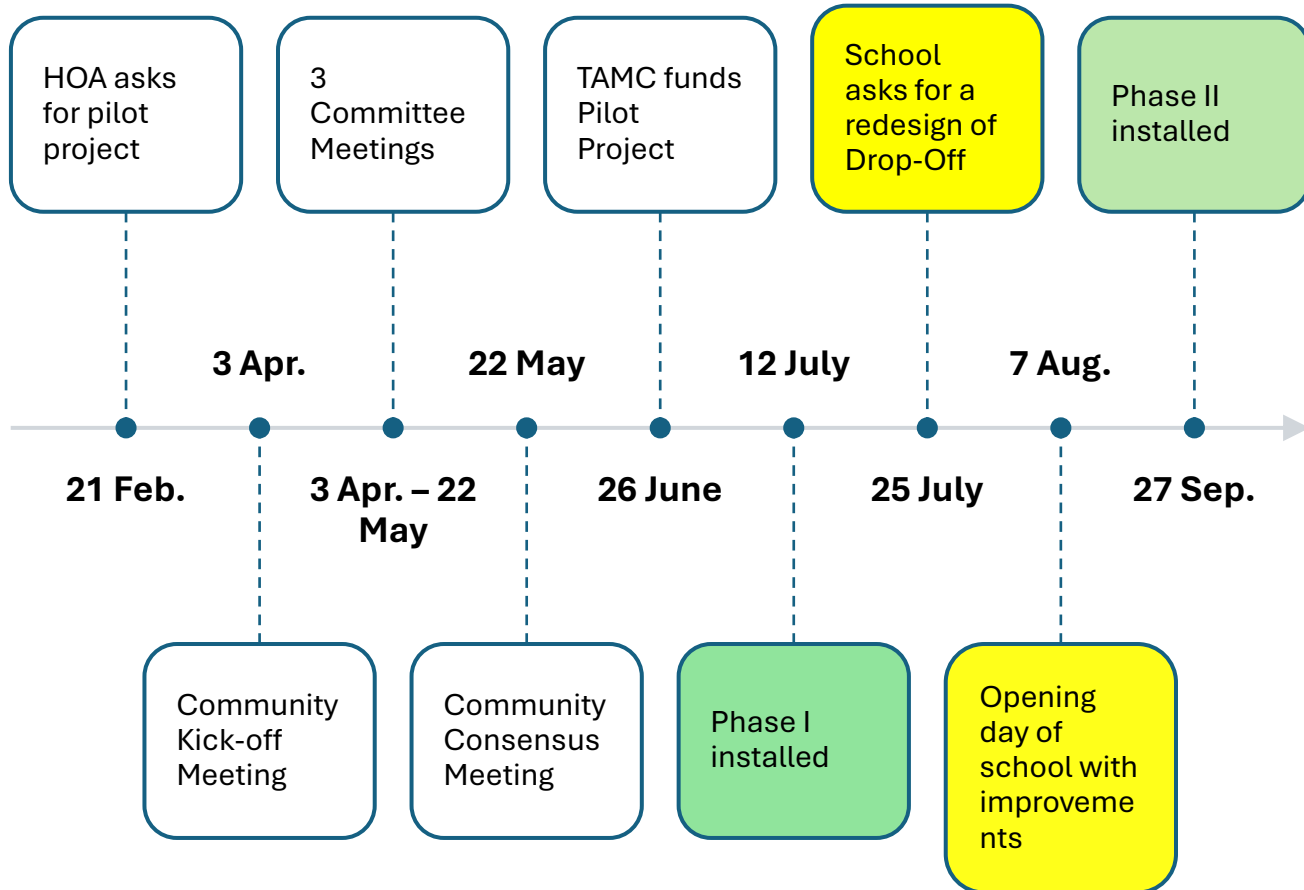
Cut-Through Cut-Through Traffic



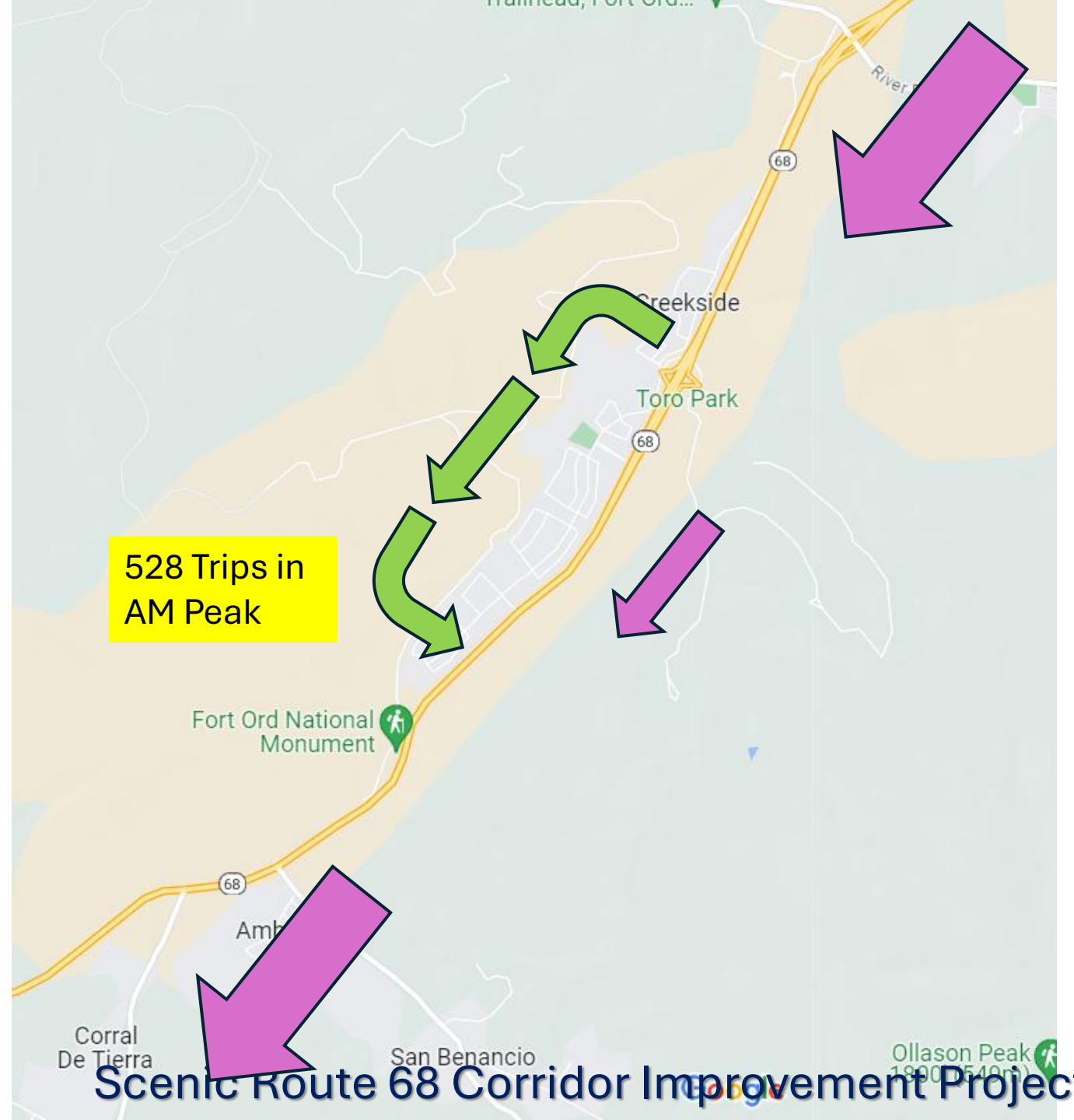


Call to action!

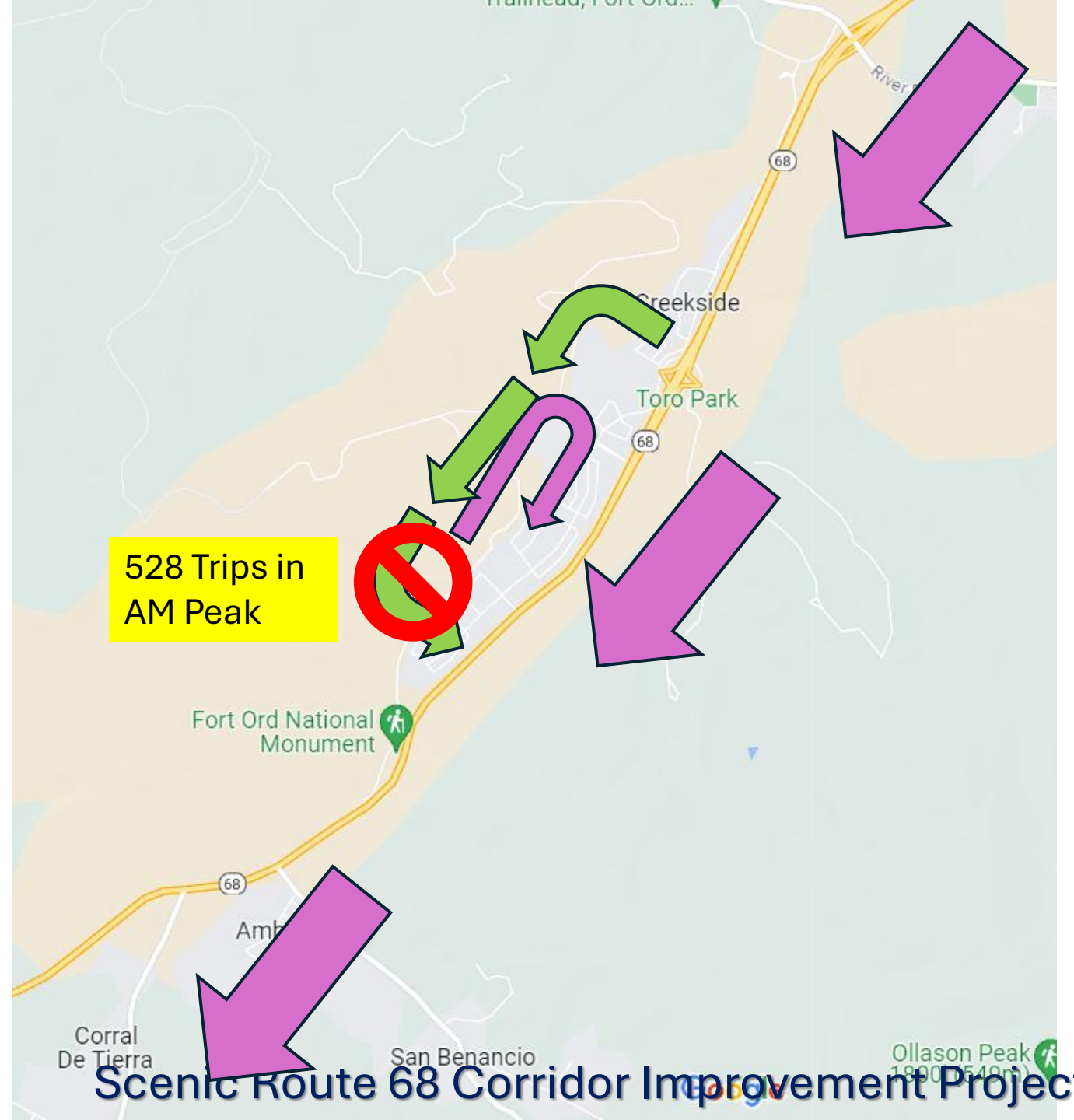
Project Schedule



Blocking the
cut-through
traffic route?

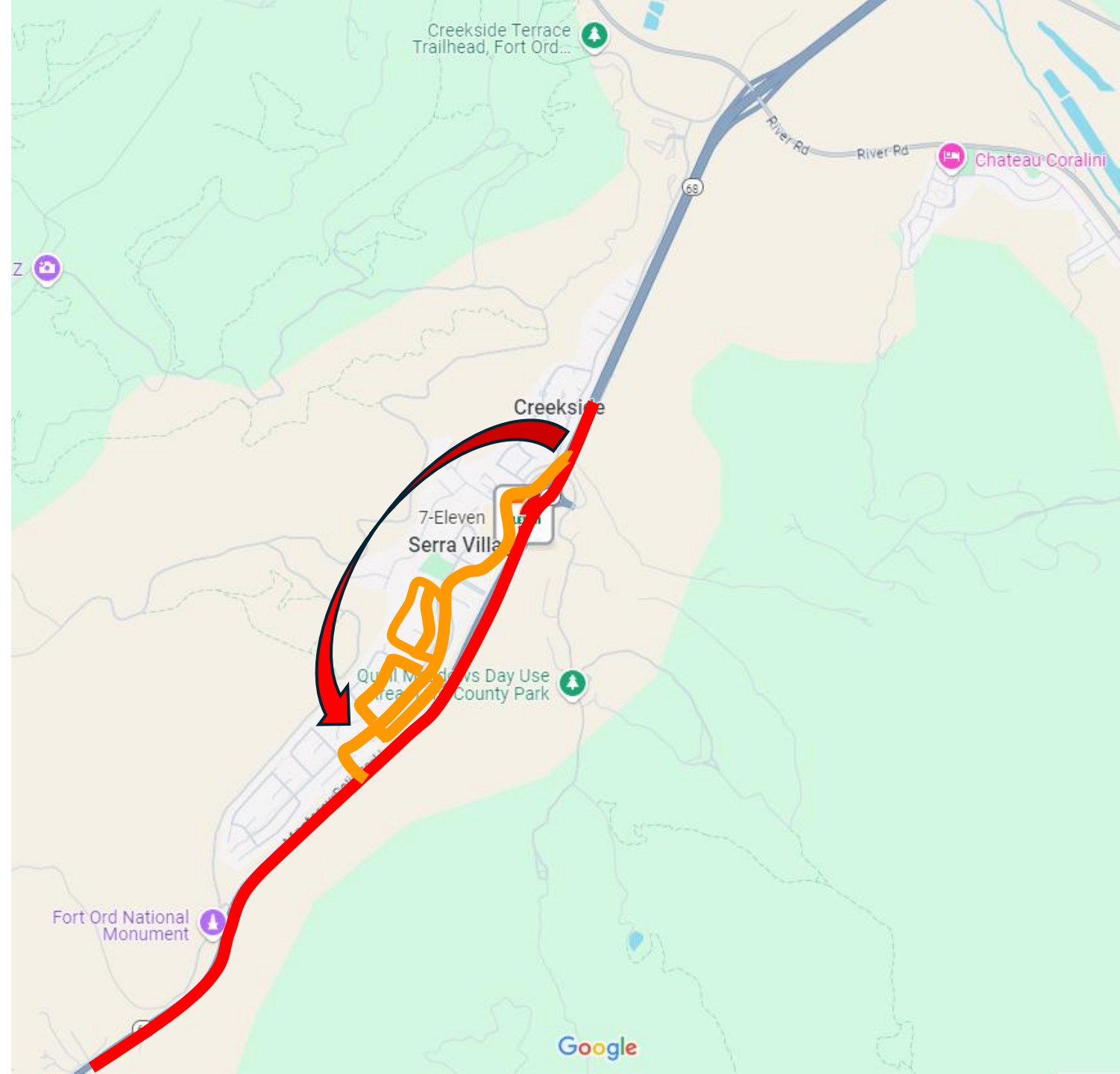


Phase I: Close Re-Entrance Point at Torero Drive



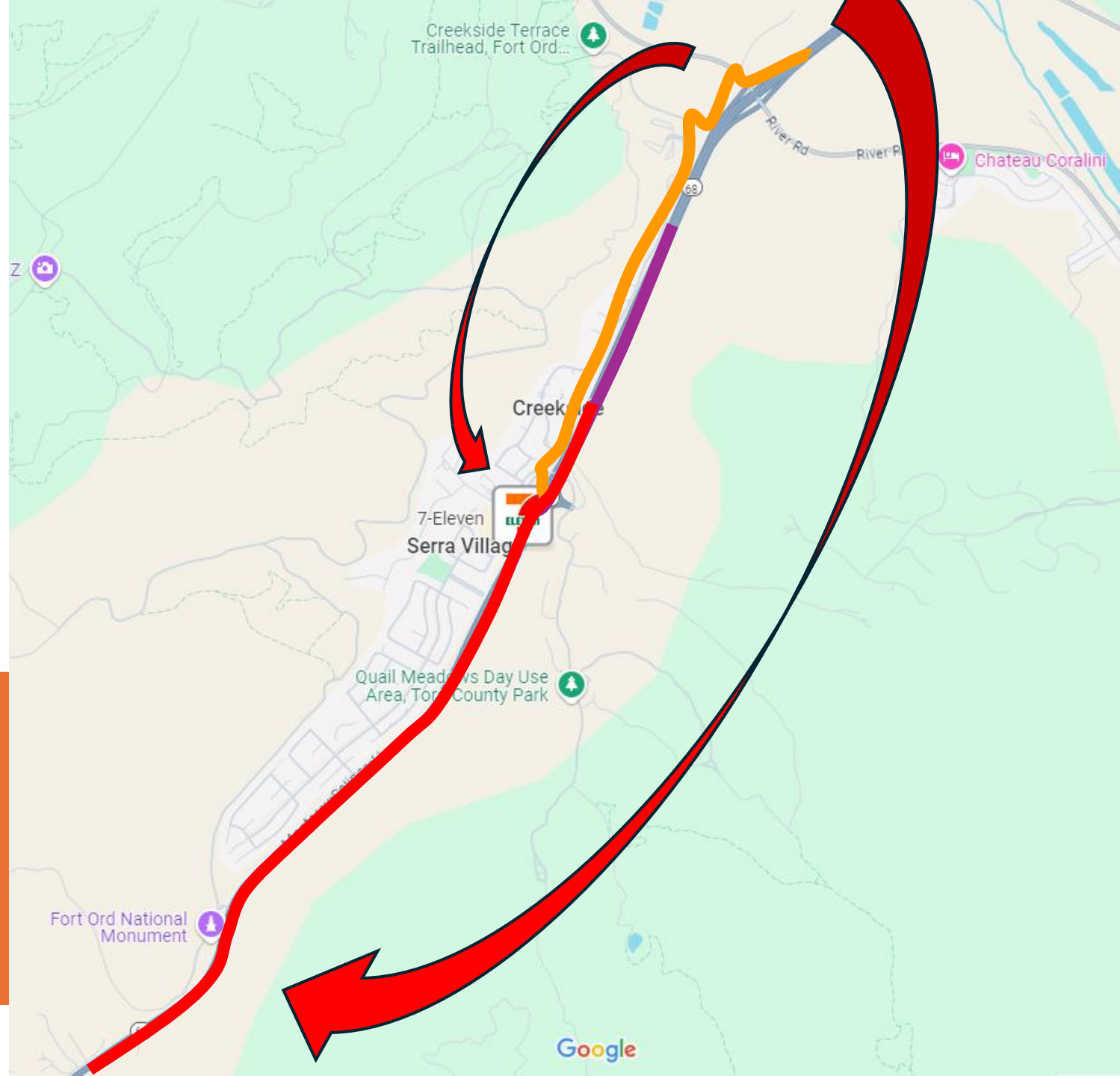
Toro Park Pilot Project

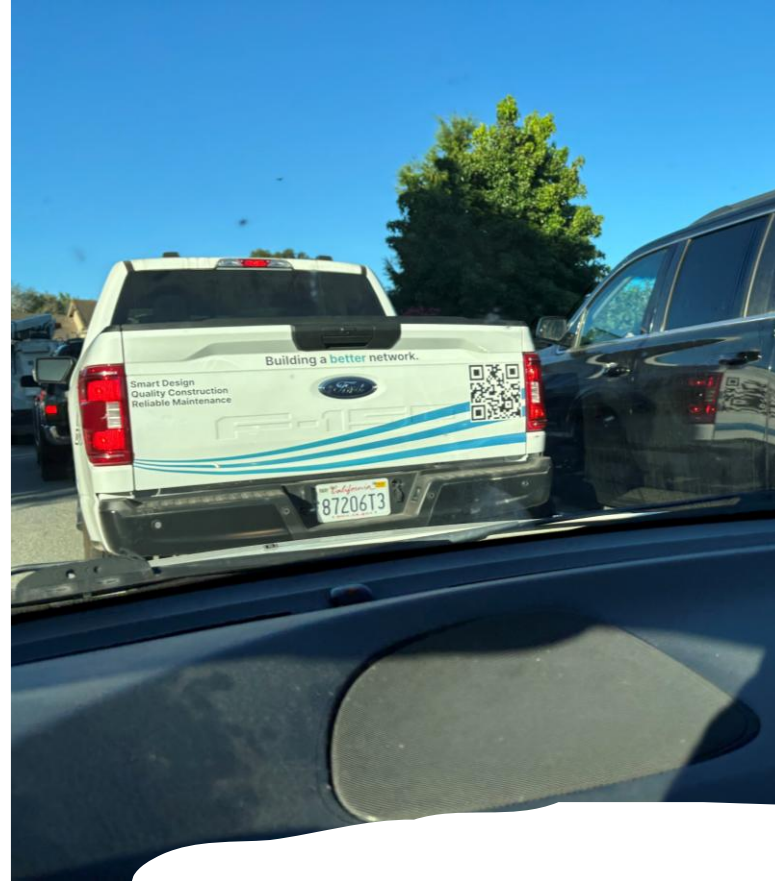
AM Peak Hour
Cut-Thru
Traffic Solved!



Toro Park Pilot Project

Other Projects
Rerouted Traffic to
Hwy 68



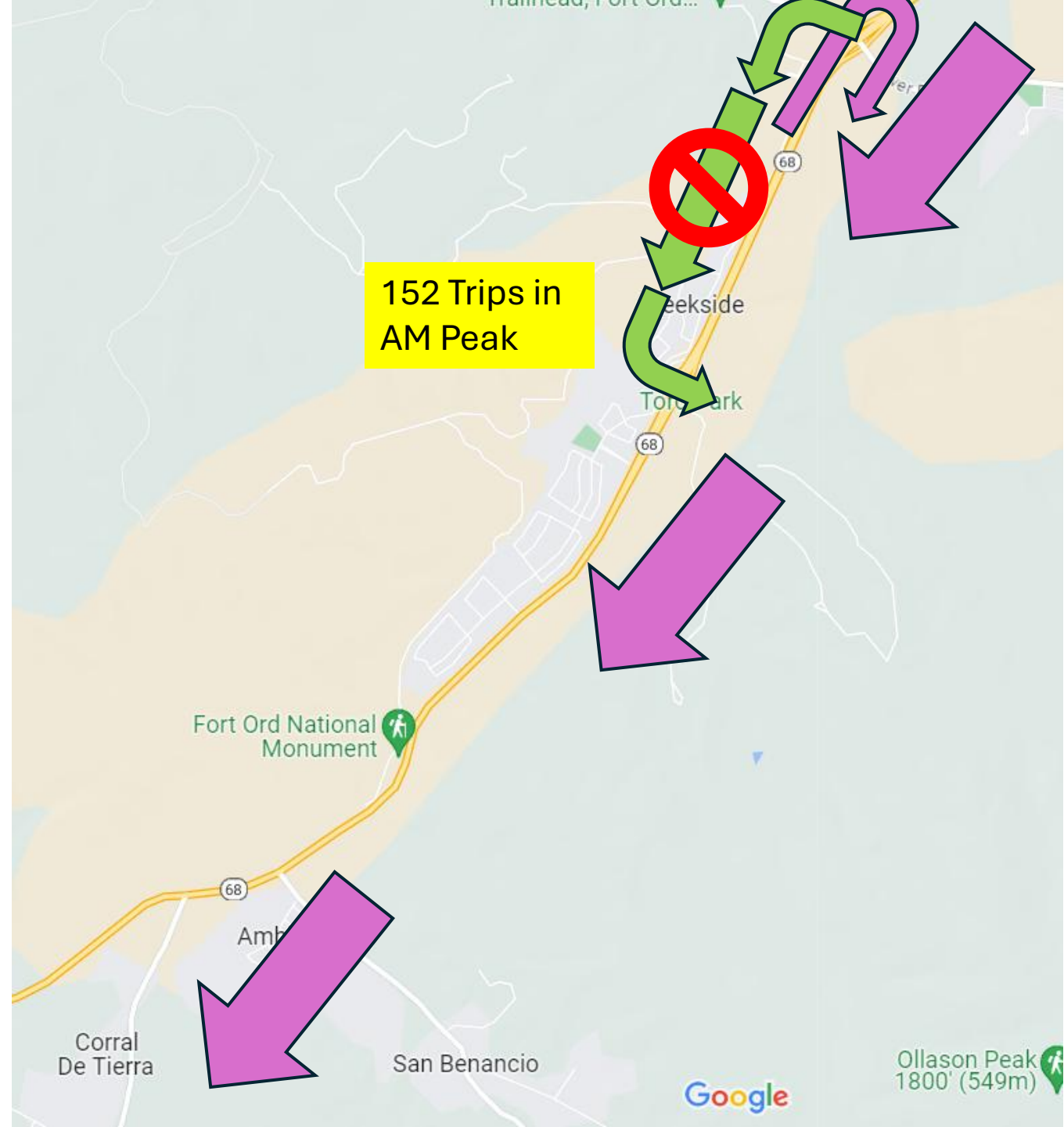


Yes We Needed
Phase II

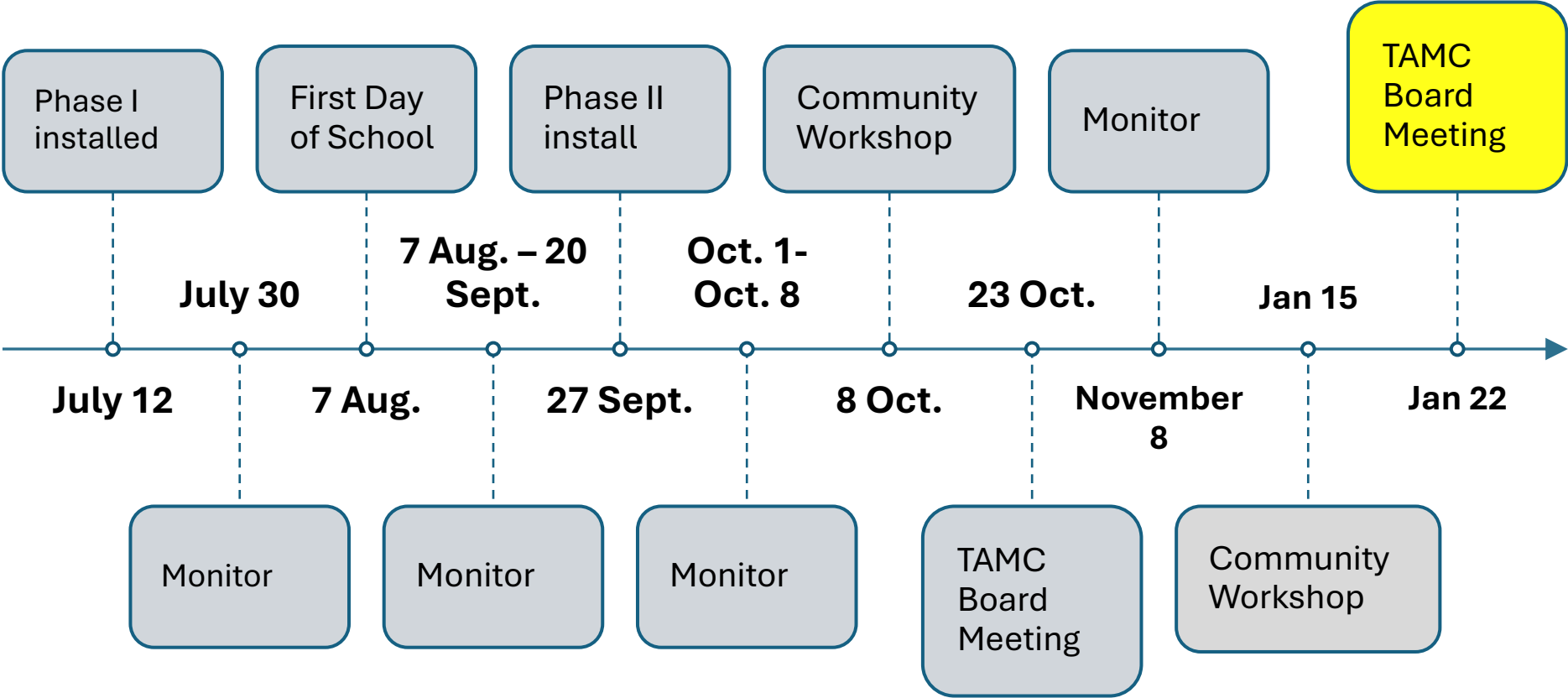
Phase II:
Close Portola Dr.
Entrance from
Hwy 68



Phase II:
Close Portola Dr.
Entrance from
Hwy 68



Pilot Project Feedback: Data Collection and Community Engagement



Toro Park Pilot Project Travel Time Runs

Route	Baseline target	Worse for school traffic	Worst for Hwy 68	Current Trend
		Phase I		Phase II
		Davis Closed		Davis Open
	Before School Opens	School Open		
	Signals Uncoordinated	Bad timing plan		Better Signal timing plan
Portola: Torero-Hwy 68	2:15-2:26	2:30-15:54	2:25	2:35-6:10
Hwy 68: Portola-Torero	3:14-9:18	8:06-12:35	20:31	3:18-6:36
Typical Loop	8:00	12:00	23:16	9:00
Worst Loop	11:00	24:00	23:16	11:46

Toro Park Pilot Project Travel Time Runs

Route	Baseline target	Worse for school traffic	Worst for Hwy 68	Current Trend
	Phase I		Phase II	
	Davis Closed			Davis Open
	Before School Opens	School Open		
	Signals Uncoordinated	Bad timing plan		Better Signal timing plan
Portola: Torero-Hwy 68	2:15-2:26	2:30-15:54	2:25	2:35-6:10
Hwy 68: Portola-Torero	3:14-9:18	8:06-12:35	20:31	3:18-6:36
Typical Loop	8:00	12:00	23:16	9:00
Worst Loop	11:00	24:00	23:16	11:46

October 8 Community Workshop Results

What should we do next?

We are done
mission
accomplished

We're not there
yet. Need to do more
(e.g., improve Hwy68)

It didn't work.
Pull the plug.
Take it out now.

Wait and see how
people adjust. We
need more time

Q4
G3

What should we do next?

We are done
mission
accomplished

We're not there
yet. Need to do more
(e.g., improve Hwy68)

It didn't work.
Pull the plug.
Take it out now.

Wait and see how
people adjust. We
need more time

Q4
G1

What should we do next?

We are done
mission
accomplished

We're not there
yet. Need to do more
(e.g., improve Hwy68)

It didn't work.
Pull the plug.
Take it out now.

Wait and see how
people adjust. We
need more time

Q4
G4

What should we do next?

We are done
mission
accomplished

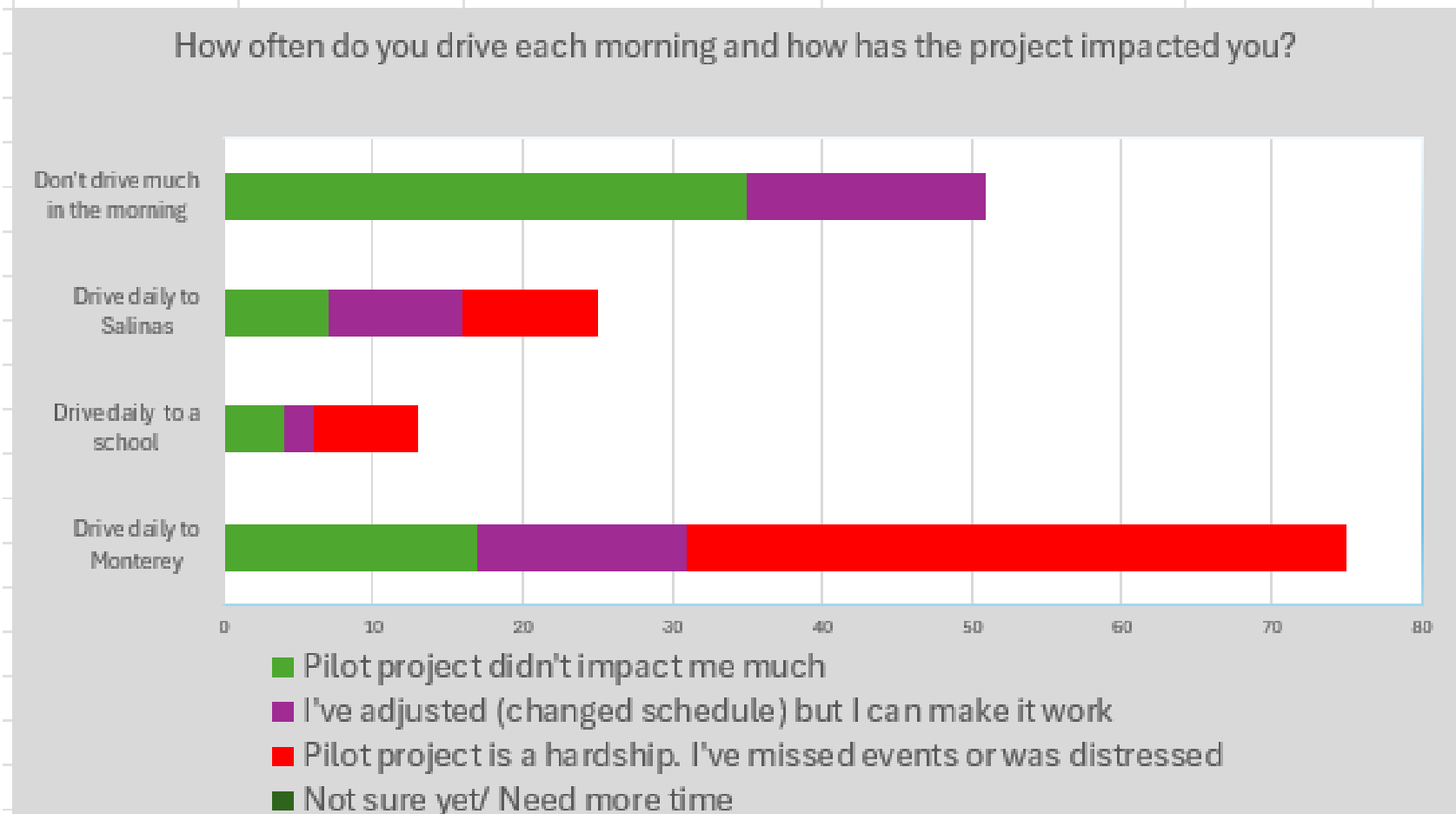
We're not there
yet. Need to do more
(e.g., improve Hwy68)

It didn't work.
Pull the plug.
Take it out now.

Wait and see how
people adjust. We
need more time

Q4
G2

How often do you drive each morning and how has the project impacted you?					
Group	Answer Options				TOTAL
	Pilot project didn't impact me much	I've adjusted (changed schedule) but I can make it work	Pilot project is a hardship. I've missed events or was distressed	Not sure yet/ Need more time	
Drive daily to Monterey	17	14	44	59%	75
Drive daily to a school	4	2	7	0	13
Drive daily to Salinas	7	9	9	0	25
Don't drive much in the morning	35	16	0	0	51
TOTAL	63	41	60	37%	164

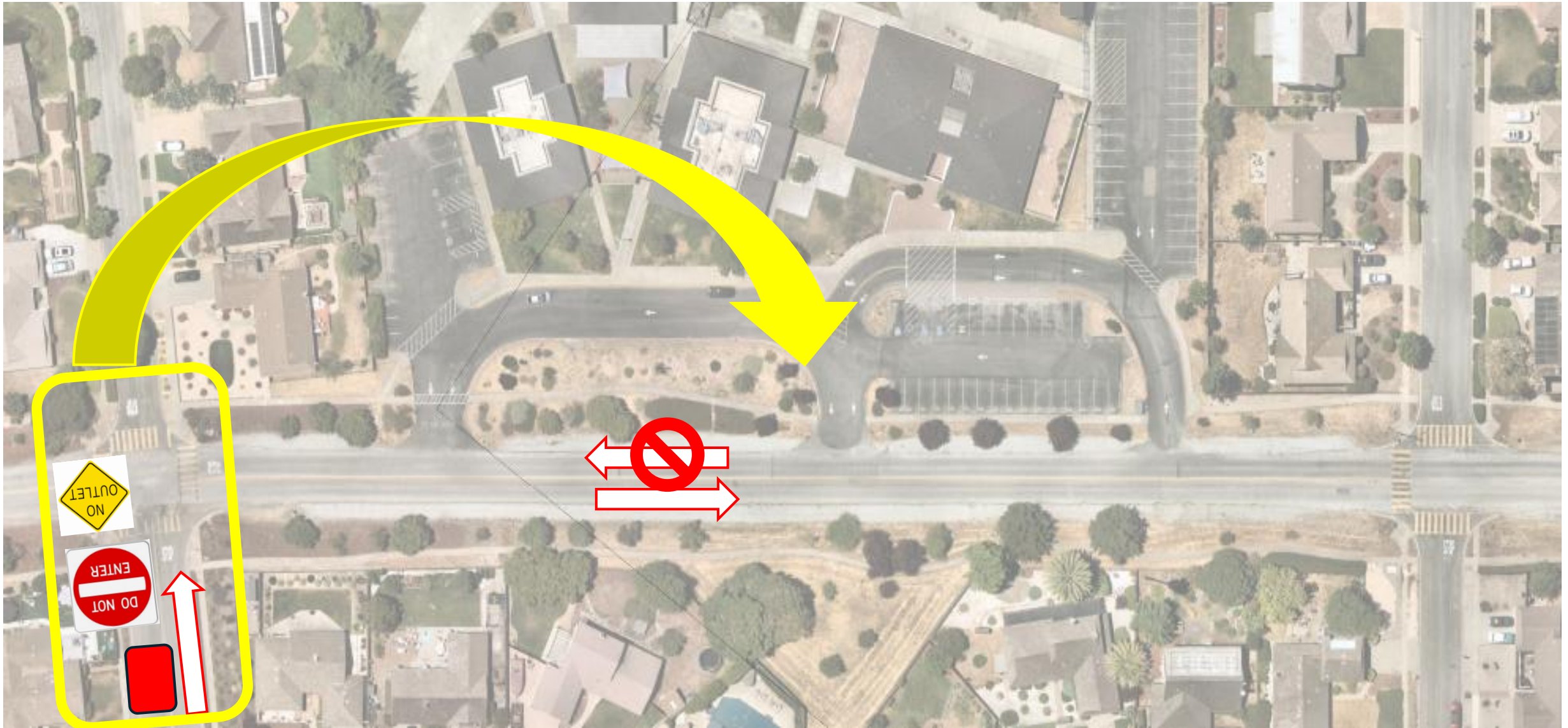


We Heard You Loud and Clear!

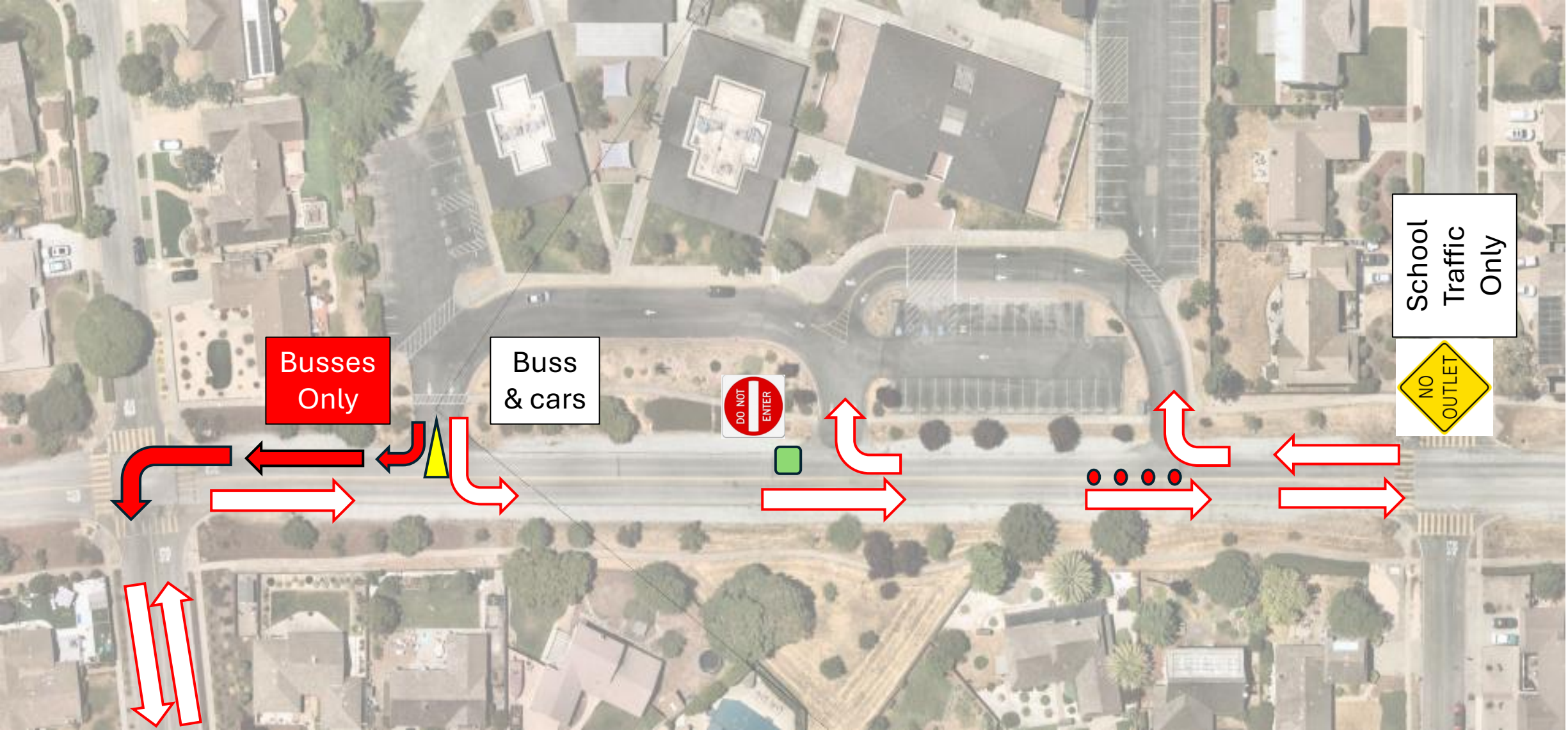
- Phase I doesn't work for West Toro or school
- Phase II is too close to Creekside residences
- Congestion limited to a few hours- solution should be too!
- Fund permanent improvements
- Make it look nice



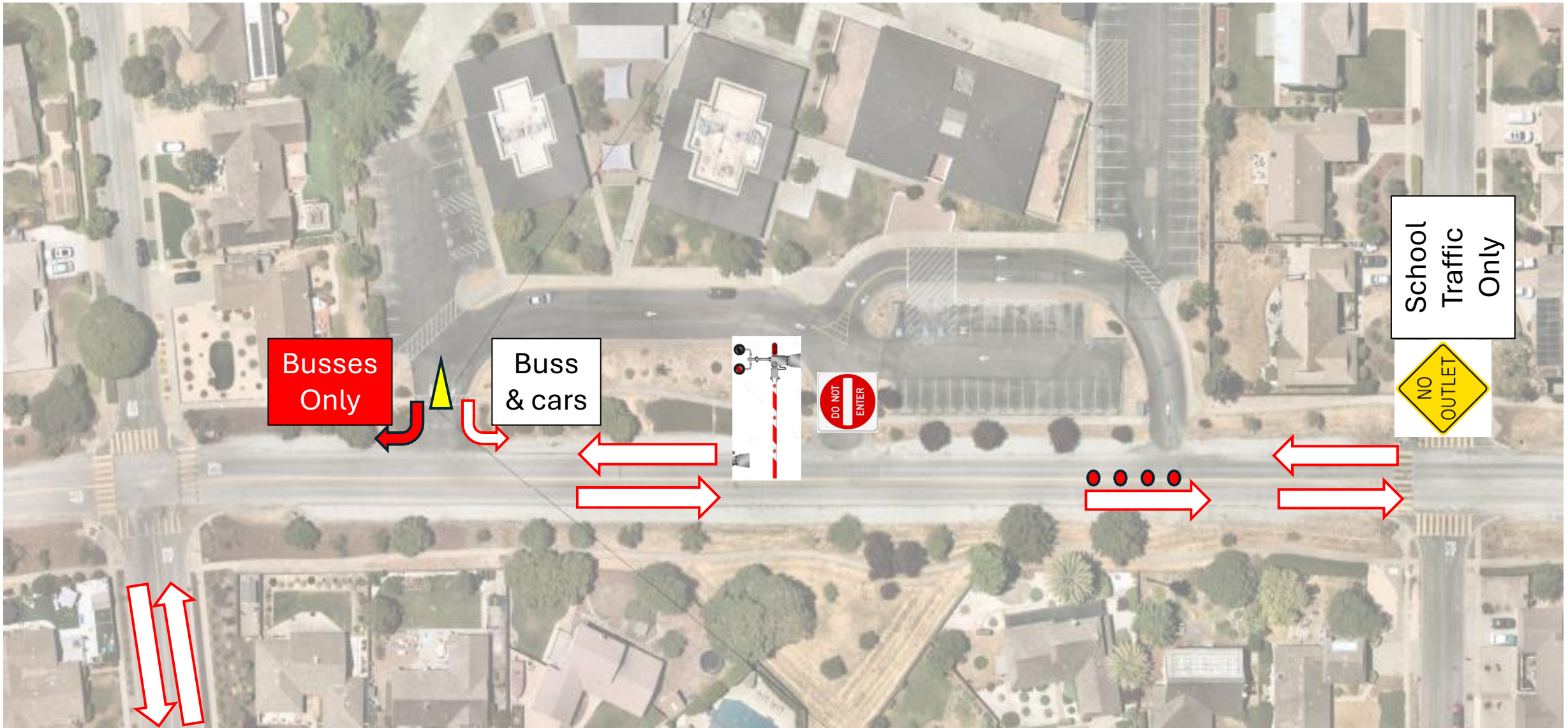
Phase I: Torero Drive Relocation



Torero Drive Relocation: No Gate



Torero Drive Relocation: With Gate

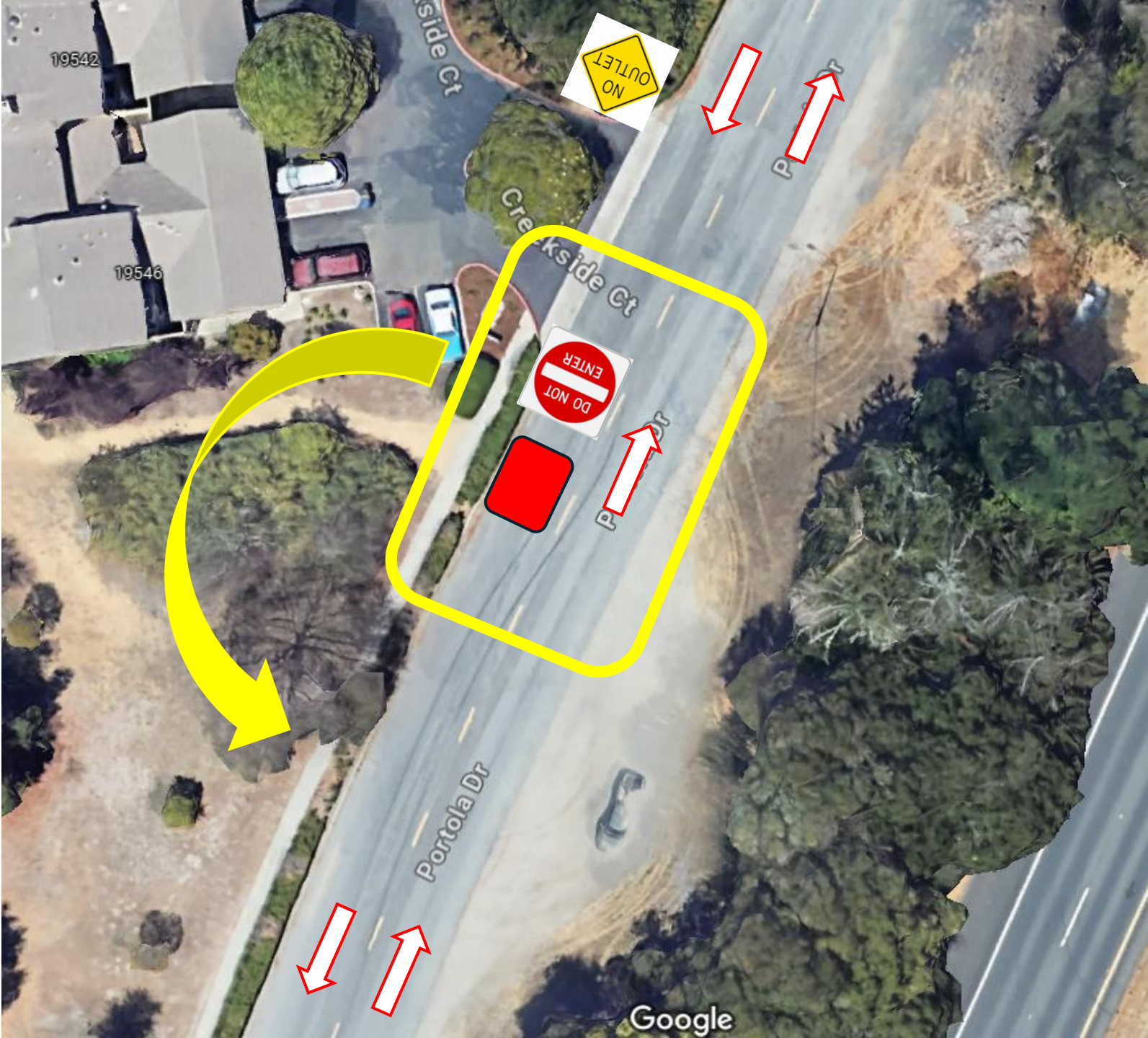


January 15 Workshop Results

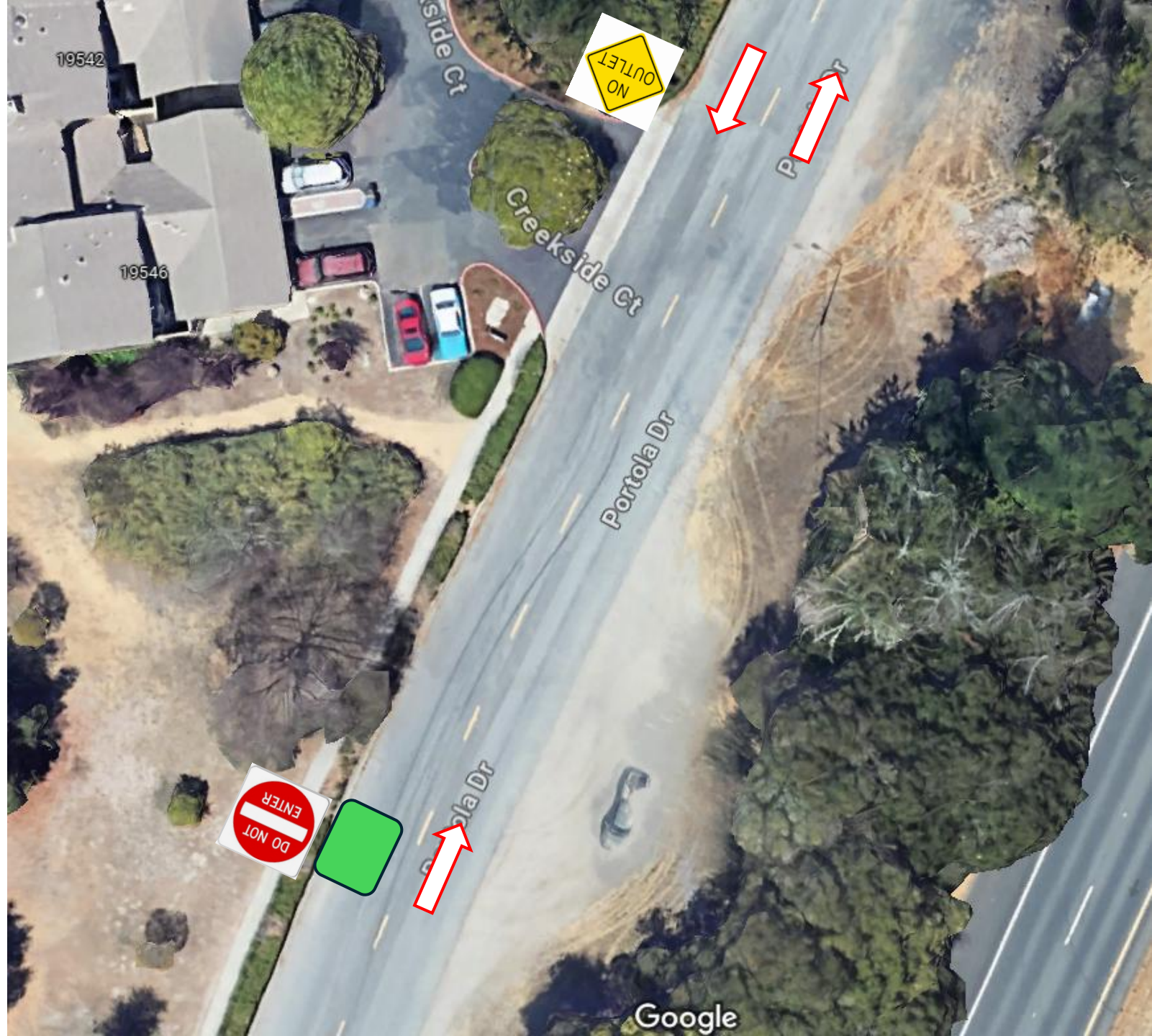
Torero Drive Partial Road Closure

Relocate closure to School Entrance:	
All	64%
West Toro Park	70%
Install gates when possible:	
All	85%
West Toro Park	75%
Remove road closures/Kill project:	
All	8%
West Toro Park	16%

Phase II: Relocate Creekside



Relocate Creekside No Gate



Relocate Creekside With Gate



January 15 Workshop Results

Creekside Partial Road Closure

Relocate closure to School Entrance: 89%

Install gates when possible: 82%

Remove closures/Kill project: 10%

How do we fund this?

- Include safe routes to school features
- Include multimodal path
- Tie improvements into State Route 68 Roundabout Project



ADA Multi-Use Path School to Fort Ord National Monument & Laguna Seca



Legend

- Fort Ord Proposed Trail Alignment
- Crosswalk
- Raised Crosswalk
- Rapid Rectangular Flashing Beacon (RRFB)

Scale: 0 500 1,000 US Feet

Multi-Use Path



Where do you live, and do you support a Multi-Use Trail?

Do you like the idea of constructing a formal trail so that all users can enjoy it (ADA accessible)?

90% agree

Should it connect the school to the Fort Ord National Monument parking lot?

84% agree

Most important votes from January 15 workshop

- Are we heading in the right direction?
YES
- If we install gates at new locations, is adding 8-12 minutes to morning trips to Monterey Peninsula a fair trade-off for eliminating cut-thru traffic?
YES
- Did we hear you?
YES



What is left?

- Get feedback from TAMC Board on January 22
- Hand off project to County Public Works
- Complete technical report and submit to County Public Works
- Coordinate work with County staff to implement interim solutions
- Work towards funding permanent solutions as part of SB-1 grant



Recommendations for Technical Study

- Relocate Phase I Partial Road Closure to School Entrance
- Relocate Phase II Partial Road Closure Closer to Fire Station
- Research and implement movable barricades (gates)
- Upgrade devices to create a residential character
- Work with County staff on a 6-month transition plan using remaining funds





Questions

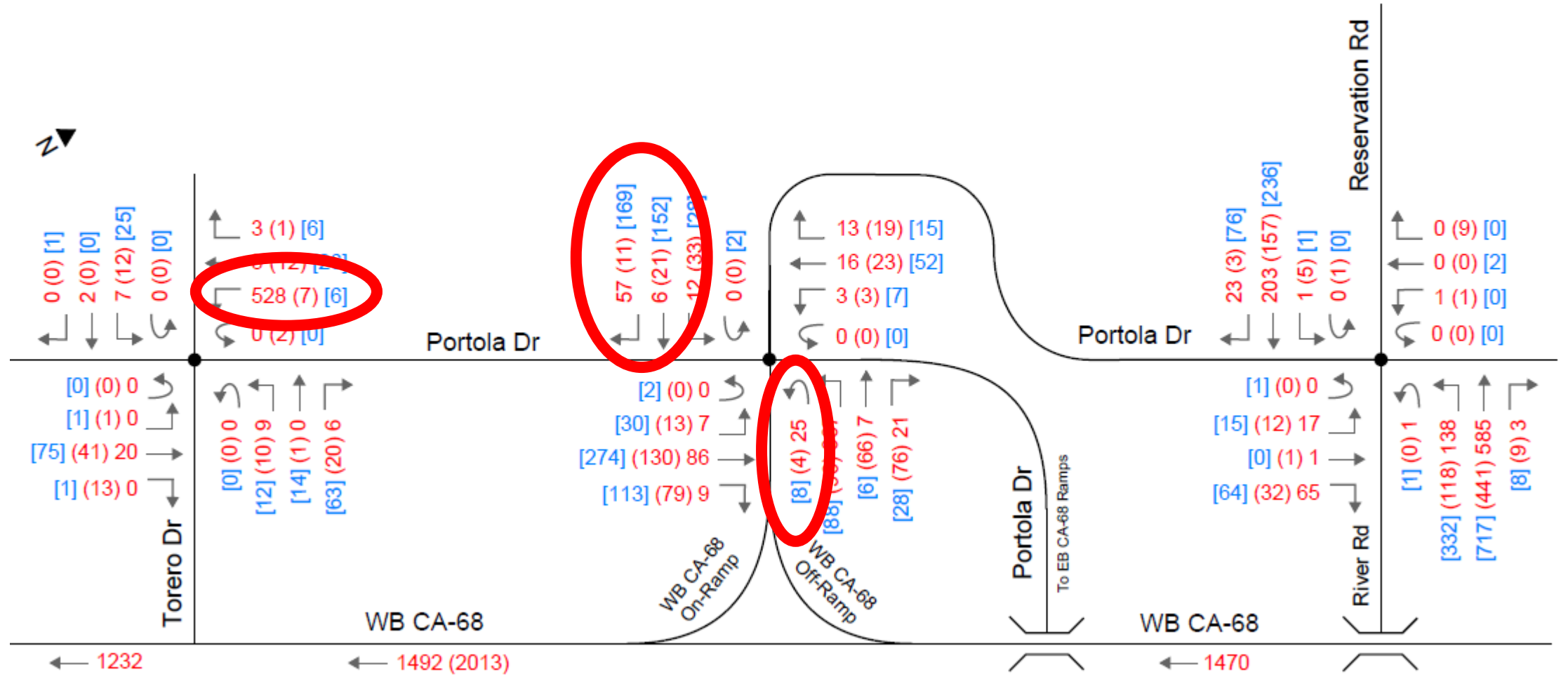


Raised
Crosswalk

Crosswalk

Toro Park Traffic Calming Project

AM Peak Hour Cut-Through Volumes



Key: [8/29/24 Count] (7/24/24 Count) 6/11/24 Count

Criteria for Partial Road Closure

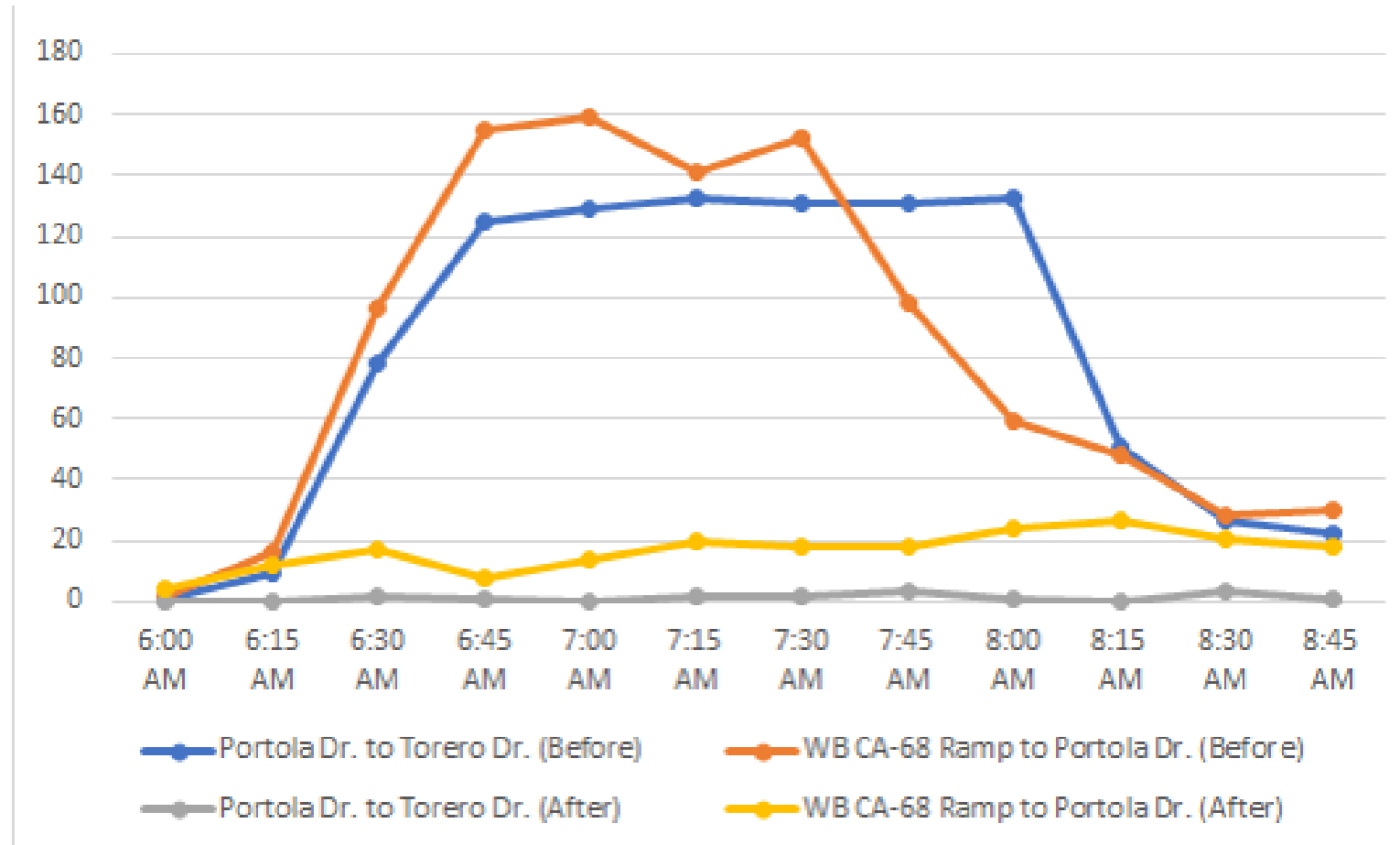
1. Must block cut-through traffic during AM Peak Hours
2. One must maintain access to school without forcing parents to make a left turn from Hwy 68 to Torero Drive
3. One must be east of fire station
4. Must be at an intersection
5. Design vehicle (FedEx truck) must be able to make a U-Turn
6. Ideally there is general agreement on location
7. Looking at Bus-Activated gate option for long-term alternative to partial road closure

What is traffic doing to our community?

Quality of Life issues

- 45 minutes to drop off students (stress)
- Safety on side streets (roads not designed for this type of traffic)
- Speeding, aggressive drivers and hostility (can't walk peacefully in the mornings)
- Feel land-locked
- Need to reschedule appointments because can't exit driveway or use Portola Drive
- Noise (don't need a clock to know when school starts)
- Commercial trucks have no business on our streets
- Emergency response
- Home values suffer from congestion

Portola Drive: Cut-Through Traffic 15-Min Counts



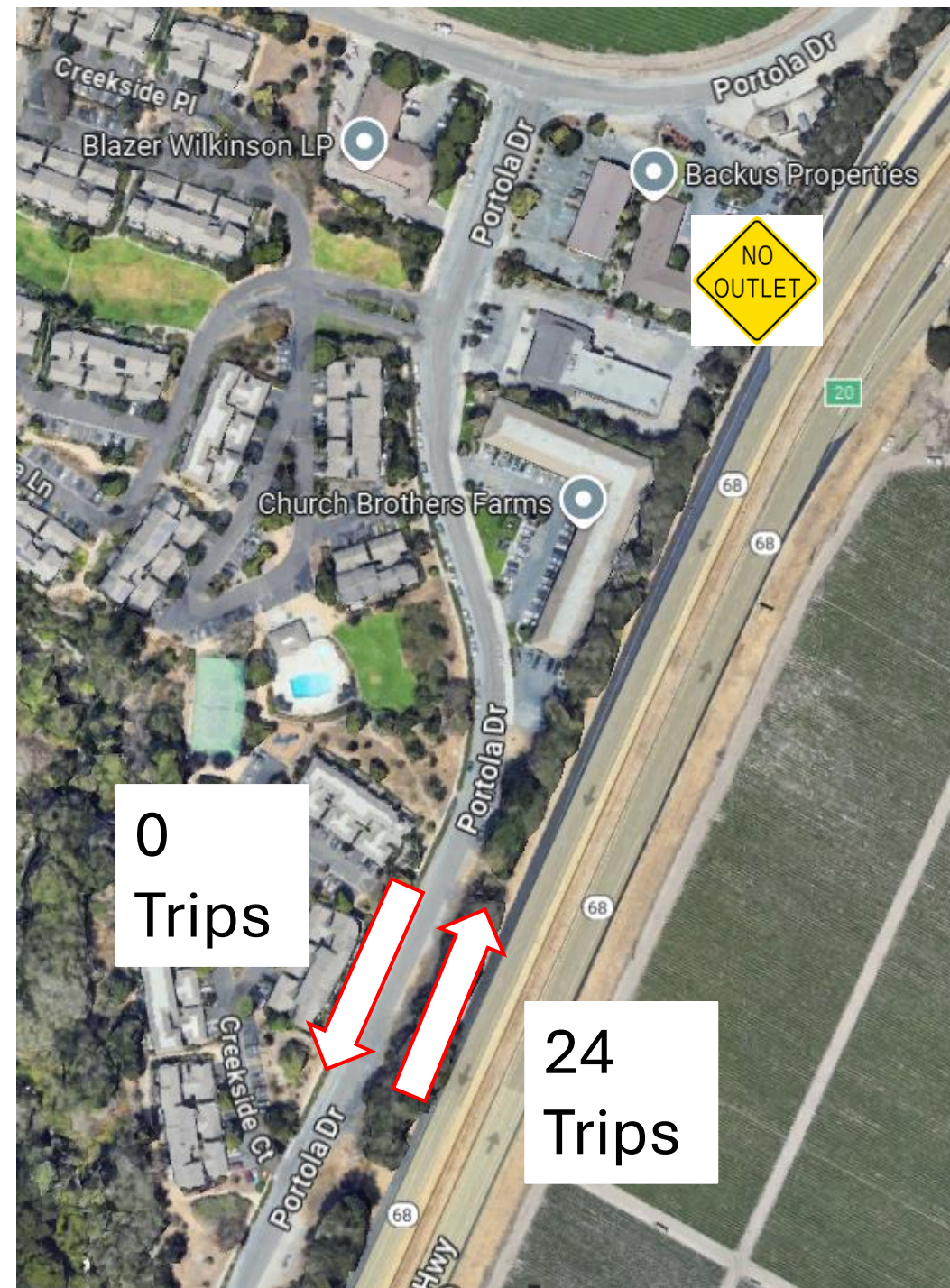
Attachment 3: Phase II (Creekside)

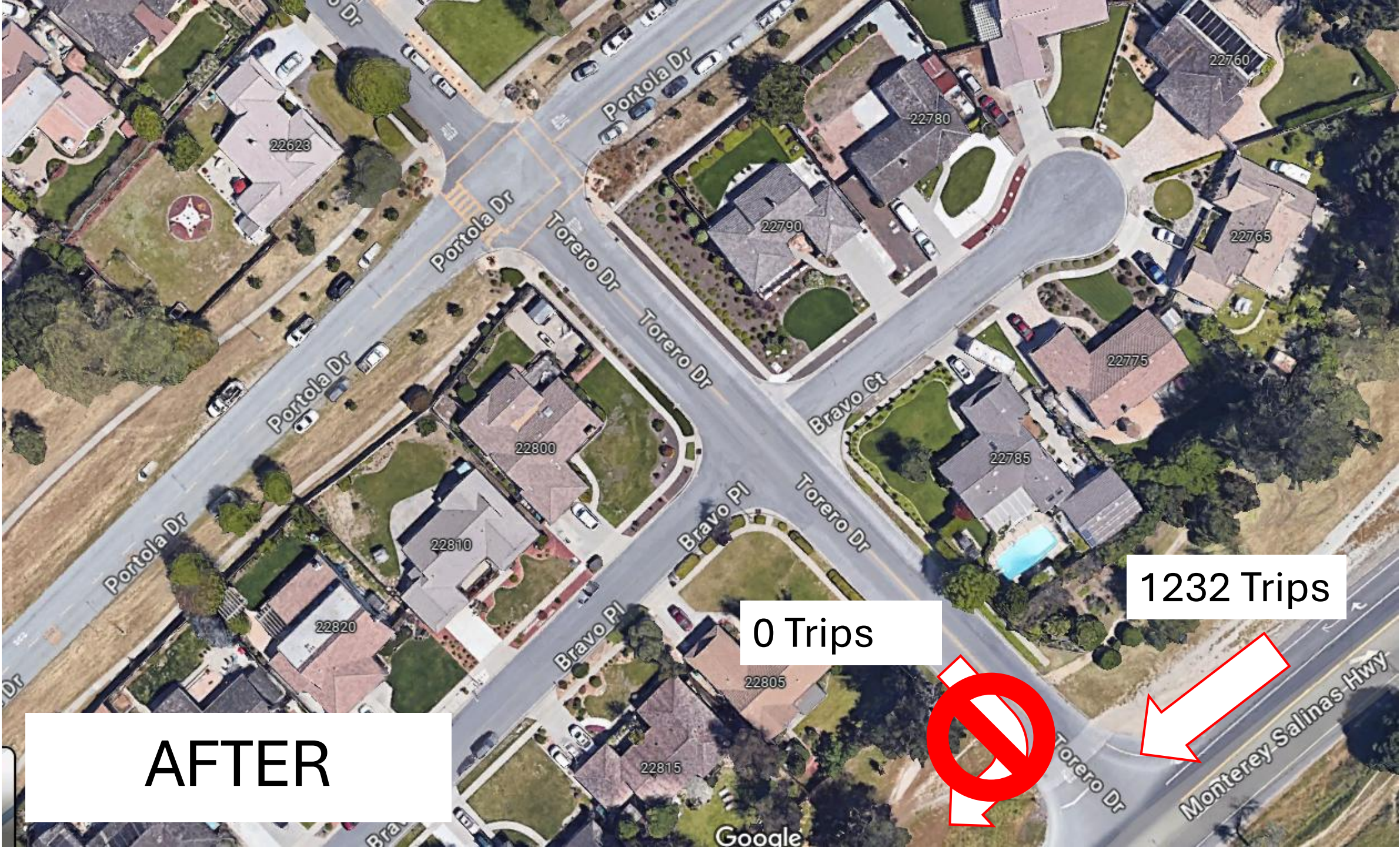




What Happens If You Ignore the Signs?

AFTER





Portola Dr

22623

Portola Dr

Portola Dr

Torero Dr

Torero Dr

Bravo Ct

22790

22780

22760

22765

22775

22785

22800

22810

Bravo Pl

Torero Dr

1232 Trips

0 Trips

22820

22805

Bravo Pl

22815

Google

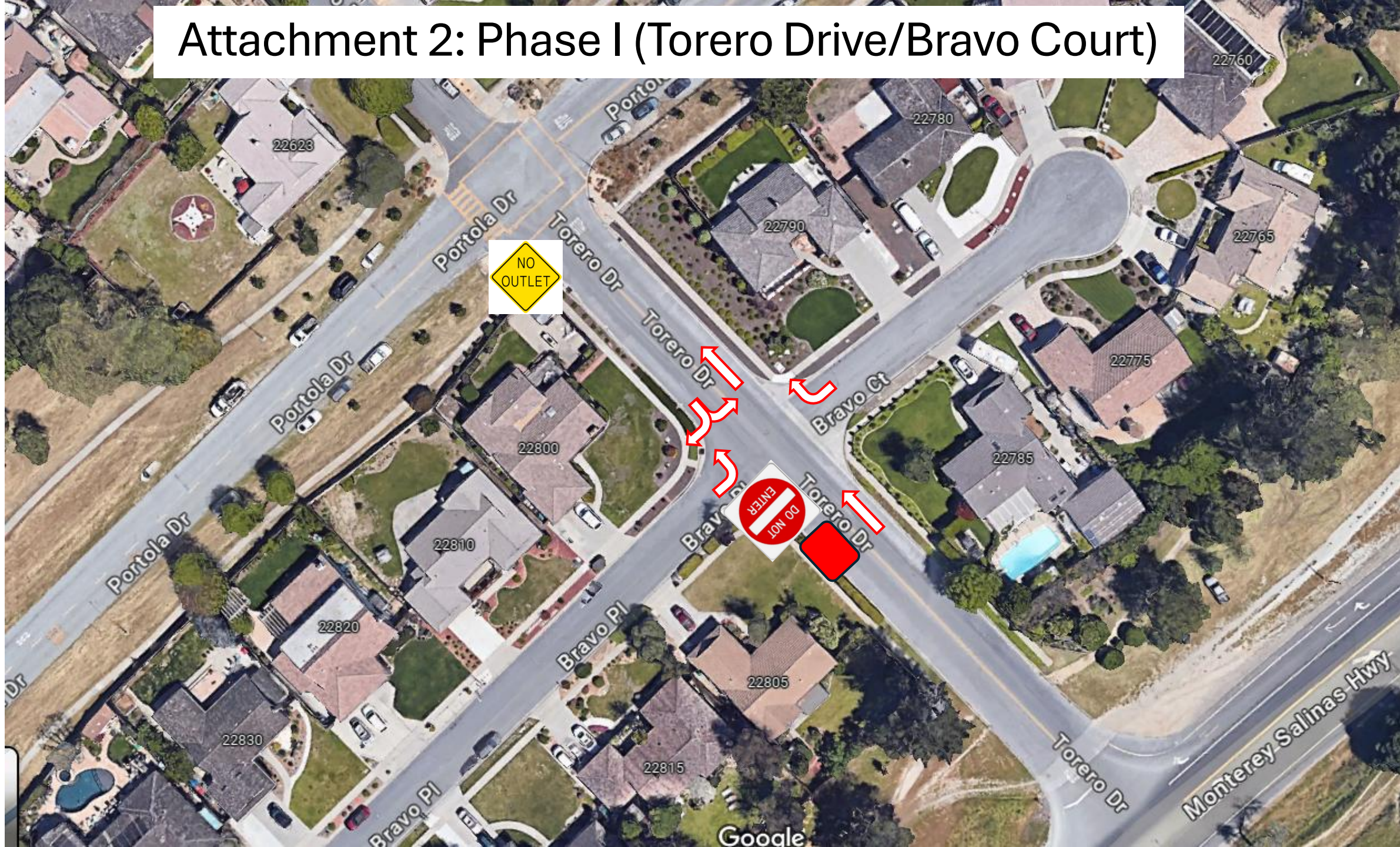
Torero Dr

Monterey Salinas Hwy

AFTER

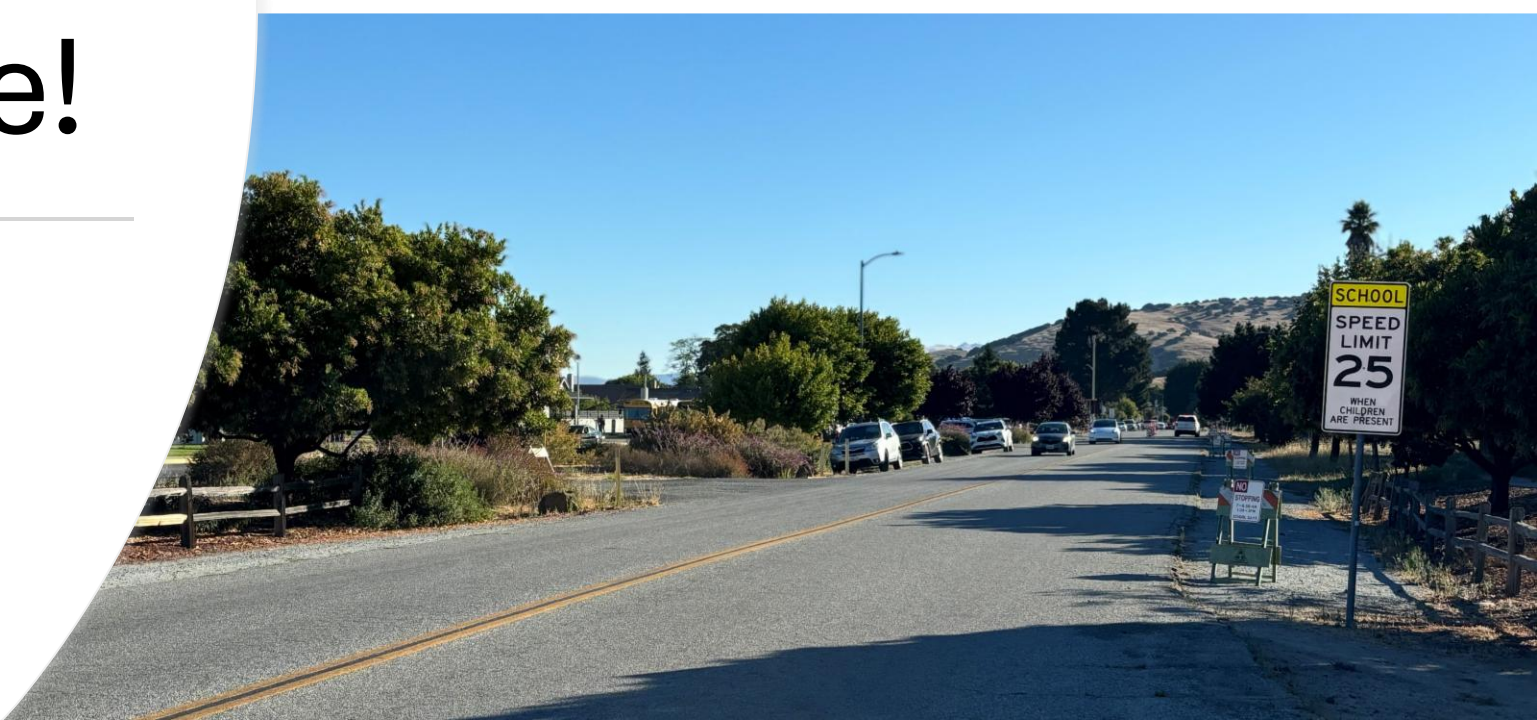


Attachment 2: Phase I (Torero Drive/Bravo Court)





Make it look nice!



What Happened Since October 8 Workshop?

- ✓ Caltrans traffic signals coordinated better on Highway 68
- ✓ Caltrans continues work implementing adaptive/AI signals
- ✓ Caltrans rejected idea to relocate the merge from current location to east of Portola Interchange
- ✓ Davis Road was re-opened
- ✓ Meet with stakeholders to identify feasible alternatives
- ✓ TAMC collected traffic data