



January 12, 2024

To: All Plan Holders

Subject: Fort Ord Regional Trail and Greenway (FORTAG) Canyon Del Rey Segment 1  
ADDENDUM No. 1

Sent Via: Web Posting/Email

**In the Bidding Documents in Bid Express, the following revisions are made:**

1. Under Base Bid, item numbers are added to all bid items.
2. Under Base Bid, Bid Item 83, 36” Precast Concrete Manhole, is replaced in its entirety with the following bid item:

Item No.	Final Pay Item	Item Code	Item Description	Unit of Measure	Estimated Quantity	Item Price
83		153123	Remove Concrete	SQYD	534	\$

3. Under Base Bid, the following new bid items are added:

Item No.	Final Pay Item	Item Code	Item Description	Unit of Measure	Estimated Quantity	Item Price
198		066105	Resident Engineer’s Office	LS	1	\$
199		120100	Traffic Control	LS	1	

4. Under Supplemental Work – Contingency Items, the Supplemental Work bid schedule is removed in its entirety.

**In the Notice to Bidders and Special Provisions, the following revisions are made:**

5. Under Notice to Bidders, the following revisions are made:
  - a. Replace the first sentence of the first paragraph in its entirety with the following sentence correcting the bid submission deadline year:  
 “Bid Submission Deadline: **Thursday, January 25, 2024, at 2:00 p.m.**”
  - b. Replace the second sentence of the fifth paragraph in its entirety with the following sentence extending the bidder inquiry date:

“Bidder inquiries must be received by **Tuesday, January 16, 2024, by 2:00 p.m.**”

6. Under Copy of Bid Item List, replace Base Bid Item 83 in its entirety with the following revised bid item:

Item No.	Final Pay Item	Item Code	Item Description	Unit of Measure	Estimated Quantity	Item Price
83		153123	Remove Concrete	SQYD	534	\$

7. Under Base Bid, the following new bid items are added:

Item No.	Final Pay Item	Item Code	Item Description	Unit of Measure	Estimated Quantity	Item Price
198		066105	Resident Engineer's Office	LS	1	\$
199		120100	Traffic Control	LS	1	

8. Under Copy of Bid Item List, the Supplemental Work bid schedule is removed in its entirety.

**In the *Project Plans*, the following revisions are made:**

9. Replace the following Plan Sheets with the attached Revised Plan Sheets:

Sheet No.	Title	Description
C-108	Improvement Plan and Profile-7	Added finish contours
C-109	Improvement Plan and Profile-8	Added finish contours
C-110	Improvement Plan and Profile-9	Added finish contours

**Additional Information:**

10. Pre-Bid Meeting: A non-mandatory Pre-Bid meeting was held at 10:00 am on Tuesday, January 9, 2024, at the Del Rey oaks City Hall, 650 Canyon Del Rey, del Rey oaks. Attached is a copy of the sign in sheet, PowerPoint presentation and notes on questions and responses.

11. All vendors who intend to submit a bid will be required to install the Info Tech Express Sign Tool and generate an Info Tech Digital ID for your authorized signer. Please plan accordingly.

A link to the Bid Express Knowledge Center may be found on TAMC's FORTAG Canyon Del Rey – Call for Construction Bids webpage ( <https://www.tamcmonterey.org/fortag-canyon-del-rey-call-for-construction-bids> ) If you need Bid Express assistance, please telephone the dedicated Bid Express customer support team at 1.888.352.2439 for live support from 7 am to 8 pm EDT during weekdays.

## Clarifications – Bidder Questions and Responses

12. **Question:** Specification page 22 of 110 talks about a DBE Commitment Form. There is no form included in the downloadable documents for this project. Is there a form that you would like us to fill out? Is there any Good Faith Effort documents that you would like us to complete?

**Response:** The attached Caltrans Exhibit 15-H , Proposer/Contractor Good Faith Efforts has been added to the Additional Documents. Bidders are to submit this Exhibit to document their good faith efforts within five (5) calendar days from bid opening.

13. **Question:** Notice to Bidder's says "The DBE/UDBE/DVBE Contract goal is ten (10) percent." I see language in the spec book about DBE paperwork but do not see anything about the UDBE or DVBE portion of the goal. Can you please advise?

**Response:** The project goal of 10% may be met by any combination of DBE, UDBE and/or DVBE.

14. **Question:** At bid time we will upload a paper copy of our bid bond. Do we need to submit the original paper bid bond to your office?

**Response:** Yes, upload a copy of your paper Bid Bond and submit the original paper Bid Bond to our office.

15. **Question:** How many Calendar Days or Working Days do we need to complete the project?

**Response:** 480 Working Days.

16. **Question:** Are cross sections and electronic files available for the earthwork? If so, please provide to bidders - thank you!

**Response:** No, cross sections and electronic files are not available for earthwork.

17. **Question:** What is the Contract Time for this project?

**Response:** 480 Working Days.

18. **Question:**

- 1) Plan Sheets 38-40 have no design contours or grades.
- 2) Plan sheet 122, section 1/s-502, can you provide the wall layout line for the retaining wall?
- 3) Supplemental Work items, if they are contingencies then TAMC should have allowances. Example, Traffic control or Utility conflict allowance, how do you bid that? Staking? these are all allowances the owner should carry. Caltrans usually has an allowance for dispute resolution onsite mtg. and hrly offsite meeting. \$6,000.00 ea/\$200.00/hr, respectively.

**Response:**

- 1) Plan sheet numbers C-108, C-109 and C-110 (sheets 38, 39 and 40 of 195) have been replaced with the attached revised Plan Sheets.
- 2) This will be addressed under Addendum No. 2.
- 3) The Supplemental Work items have been removed from the bid with the exception of the Resident Engineer's Office and Traffic Control which have been added to the Base Bid, items 198 and 199 respectively.

**Acknowledge this addendum and any others in your bid.**

An electronic bidding process has been adopted for this solicitation. A link to the electronic bidding system website is posted at <http://www.tamcmonterey.org/agency-info/bids-proposals/>. Paper bids will not be accepted. Electronic bids must be submitted through the electronic bid system and will be received until 12:00 pm, Thursday, January 25, 2024. Bidder inquiries must be submitted through the electronic bidding system and must be received by 2:00 pm on Tuesday, January 16, 2024.

Sincerely,



Laurie A. Williamson, PE, Senior Engineer  
Transportation Agency for Monterey County  
55-B Plaza Circle, Salinas, CA 93901

Attachments: Pre-Bid Meeting Sign-In Sheet, January 9, 2024  
Pre-Bid Meeting PowerPoint Presentation, January 9, 2024  
Pre-Bid Meeting Notes, January 9, 2024  
Caltrans Exhibit 15-H , Proposer/Contractor Good Faith Efforts  
Revised Plan Sheets C-108, C-109 and C-110 (38, 39 and 40 of 195)



**FORTAG CDR Segment 1  
Pre-Bid Meeting - January 9, 2024  
Sign-In sheet**

	Print Name	Agency/Company	Email	Telephone
1	Laurie Williamson <i>AW</i>	Transportation Agency for Monterey County (TAMC)	Laurie@tamcMonterey.org	831.775.4415
2	Steve Grupico <i>SG</i>	GHD	Steve.Grupico@ghd.com	415.296.3610
3	CHRIS TORRES	SEAMAN Construction	CTORRES@SEAMANINC.COM	205-858-8980
4	Randy Bonino	Graniterock	ESTIMATING@graniterock.com	408-574-1400
5	Joanna Wade	Granik Construction	joanna.wade@gcinc.com	831 4654119
6	LUKE MONROE	RANA	LMONROE@RANACREEKDESIGN.COM	831.659.3820 x 119
7	Bart Bruvo	MPE	bart@mpe2000.com	831 - 277-5917
8				
9				
10				
11				
12				



**TAMC**  
Transportation Agency for  
Monterey County

**FORT ORD REGIONAL TRAIL  
AND GREENWAY (FORTAG),  
CANYON DEL REY SEGMENT  
PRE-BID CONFERENCE  
JANUARY 9, 2024**




1

### **PROJECT DESCRIPTION**

Construction of a paved multi-use recreational trail through the City of Del Rey Oaks from Fremont Boulevard in the City of Monterey to Del Rey Woods Elementary School in the City of Seaside, including:

- HMA and concrete construction
- Bridge constructions at an at-grade highway for a trail undercrossing
- Retaining wall construction
- Traffic signal construction
- Landscape features
- Lighting
- Habitat Mitigation and Monitoring



2



3

### BID INFORMATION

- Bid Inquiries: By 2 p.m. on Friday, January 12, 2024
- Bid Submittal: Electronically (Bid Express)  
<https://www.tamcmonterey.org/bids-and-proposals>
- Bid Opening: 2 p.m., Thursday, January 25, 2024
- Basis of Award: Base Bid (Items 1 through 197)
- Working Days: 480 Working Days

The TAMC logo is positioned in the bottom right corner of the slide, featuring a stylized circular icon followed by the letters 'TAMC'.

4

## **BID PROPOSAL FORMS**

**Required forms include, but are not limited to, the following:**

- Addenda Acknowledgement, if any
- Bid Form and Bid Schedules (Base and Supplemental)
- List of Subcontractors
- Equal Employment Opportunity Certification
- Public Contract Code Statements and Questionnaire
- Noncollusion Affidavit
- Debarment and Suspension Certification
- Bidder's Bond, 10%
- Construction Contract DBE Commitment Exhibit 15-G (Certificate of Good-Faith Effort, Prime)
- Certificate of Workers' Compensation Insurance



5

## **KEY CONSTRAINTS AND ISSUES**

**Agency Permits Required (See Section 5, Control of Work):**

- Caltrans
- City of Monterey
- City of Del Rey Oaks
- City of Seaside
- Monterey Peninsula Regional Parks District (MPRPD)
- Monterey Peninsula Water Management District (MPWMD)



6



## **KEY CONSTRAINTS AND ISSUES**

### **REGULATORY AGENCY PERMITS AND WORK WINDOWS:**

- Demolition Sequencing: Demo in Sections, not all at once  
(See Section 10-1.02A)
- Bird Surveys: Required for any vegetation removal between February 15<sup>th</sup> and August 31<sup>st</sup>
- Clean equipment before operating on the job site (with Statement of Compliance)
- Noise Limits (See Section 14-8.02)



7

## **KEY CONSTRAINTS AND ISSUES**

### **UTILITY COORDINATION (SEE SECTION 5-1.36C)**

- California American Water (CalAm)
- PG&E Gas
- PG&E Electric Distribution
- PG&E Electric Transmission
- AT&T
- Seaside County Sanitation District (SCSD)



8

## **KEY CONSTRAINTS AND ISSUES**

### **TRAFFIC CONTROL AND WORKING HOURS (SEE SECTION 12)**

- 2 stage bridge work (no closure), 2 lanes shifted per Section 12-3.11C(3). Note and abide by the Closure Charts
- No night work in Del Rey Oaks

### **STAGING AND ACCESS**

- Staging Area: Not provided in the contract
- Access: Through the site limits



9

## **QUESTIONS**



10



## Fort Ord Regional Trail and Greenway (FORTAG) Canyon Del Rey Segment 1

### Non-mandatory Pre-Bid Meeting Notes - Questions and Responses January 9, 2024

---

1. **Question:** Who is responsible for the biological surveyor, pre surveys, etc.?

**Response:** The construction management firm MNS will be conducting pre-construction surveys for sensitive species prior to the start of construction work. A Bat Roost Habitat Survey was conducted in October 2023.

2. **Question:** Where is concrete hardscape removal covered (road ex, misc. demo items, clear & grub, etc.)? Also, the Caltrans unit of measure is usually SF or CY, not Acre.

**Response:** Bid Item 83, 36" Precast Concrete Manhole, has been replaced with Remove Concrete per square yard. Item code 153123.

3. **Question:** There appear to be duplicate bid items and one bid item has a zero quantity, please clarify?

**Response:** Item 83, 36" Precast Concrete Manhole, with a zero quantity has been replaced. See Question 2 above. No duplicate bid items were noted.

4. **Question:** Will an allowance for permit fees be provided?

**Response:** Bid Item 197, Agency Permit Fees, includes a Lump Sum allowance of \$40,000. See Section 5, Control of Work, for additional information.

5. **Question:** Is a yard for the RE office trailer being provided?

**Response:** No yard is provided; contractor to provide the location and required items.

6. **Question:** Will allowances for Supplemental Work be provided?

**Response:** The Supplemental Work items have been removed from the bid with the exception of the Resident Engineer's Office and Traffic Control which have been added to the Base Bid, items 198 and 199 respectively.

7. **Question:** Have you obtained all necessary rights of way?

**Response:** All ROW necessary to complete the project has been secured and ROW Certification has been approved by Caltrans.

8. **Question:** Do you have any subconsultants to provide the butterfly art?

**Response:** Contractor is responsible for performing all areas of work by qualified professionals.

9. **Question:** Do you anticipate the bid date being extended?

**Response:** Possibly, if it is determined that a bid opening postponement is needed.

**EXHIBIT 15-H: PROPOSER/CONTRACTOR GOOD FAITH EFFORTS**

**Fort Ord Regional Trail and Greenway (FORTAG) Canyon Del Rey Segment 1**

Cost Proposal Due Date \_\_\_\_\_ PE/CE

Federal-aid Project No(s). ATPSB1L-6143(088) Bid Opening Date \_\_\_\_\_ CON

The Transportation Agency for Monterey County (TAMC) established a Disadvantaged Business Enterprise (DBE) goal of 10 % for this contract. The information provided herein shows the required good faith efforts to meet or exceed the DBE contract goal.

Proposers or bidders submit the following information to document their good faith efforts within five (5) **calendar** days from cost proposal due date or bid opening. Proposers and bidders are recommended to submit the following information even if the Exhibit 10-O1: Consultant Proposal DBE Commitments or Exhibit 15-G: Construction Contract DBE Commitment indicate that the proposer or bidder has met the DBE goal. This form protects the proposer’s or bidder’s eligibility for award of the contract if the administering agency determines that the bidder failed to meet the goal for various reasons, e.g., a DBE firm was not certified at bid opening, or the bidder made a mathematical error.

The following items are listed in the Section entitled “Submission of DBE Commitment” of the Special Provisions, **please attach additional sheets as needed**:

- A. The names and dates of each publication in which a request for DBE participation for this project was placed by the bidder (please attach copies of advertisements or proofs of publication):

Publications	Dates of Advertisement

- B. The names and dates of written notices sent to certified DBEs soliciting bids for this project and the dates and methods used for following up initial solicitations to determine with certainty whether the DBEs were interested (please attach copies of solicitations, telephone records, fax confirmations, etc.):

Names of DBEs Solicited	Date of Initial Solicitation	Follow Up Methods and Dates

C. The items of work made available to DBE firms including those unbundled contract work items into economically feasible units to facilitate DBE participation. It is the bidder's responsibility to demonstrate that sufficient work to facilitate DBE participation in order to meet or exceed the DBE contract goal.

Items of Work	Proposer or Bidder Normally Performs Item (Y/N)	Breakdown of Items	Amount (\$)	Percentage Of Contract
				%
				%
				%
				%

D. The names, addresses and phone numbers of rejected DBE firms, the reasons for the bidder's rejection of the DBEs, the firms selected for that work (please attach copies of quotes from the firms involved), and the price difference for each DBE if the selected firm is not a DBE:

Names, addresses and phone numbers of rejected DBEs and the reasons for the bidder's rejection of the DBEs:

---



---



---



---

Names, addresses and phone numbers of firms selected for the work above:

---



---



---



---

E. Efforts (e.g. in advertisements and solicitations) made to assist interested DBEs in obtaining information related to the plans, specifications and requirements for the work which was provided to DBEs:

---



---



---



---

F. Efforts (e.g. in advertisements and solicitations) made to assist interested DBEs in obtaining bonding, lines of credit or insurance, necessary equipment, supplies, materials, or related assistance or services, excluding supplies and equipment the DBE subcontractor purchases or leases from the prime contractor or its affiliate:

---

---

---

---

---

G. The names of agencies, organizations or groups contacted to provide assistance in contacting, recruiting and using DBE firms (please attach copies of requests to agencies and any responses received, i.e., lists, Internet page download, etc.):

Name of Agency/Organization	Method/Date of Contact	Results
-----------------------------	------------------------	---------

---

---

---

---

---

---

---

---

H. Any additional data to support a demonstration of good faith efforts:

---

---

---

---

---

---

---

---

---

---

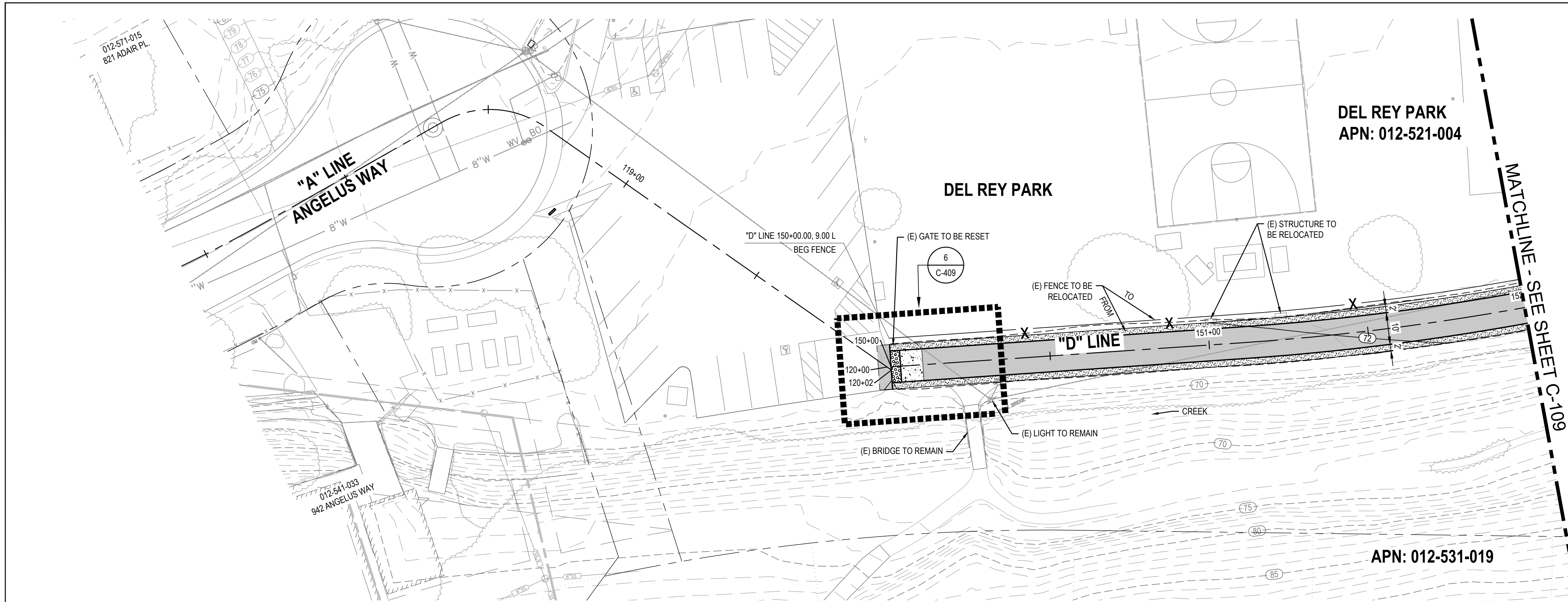
---

---

---

---

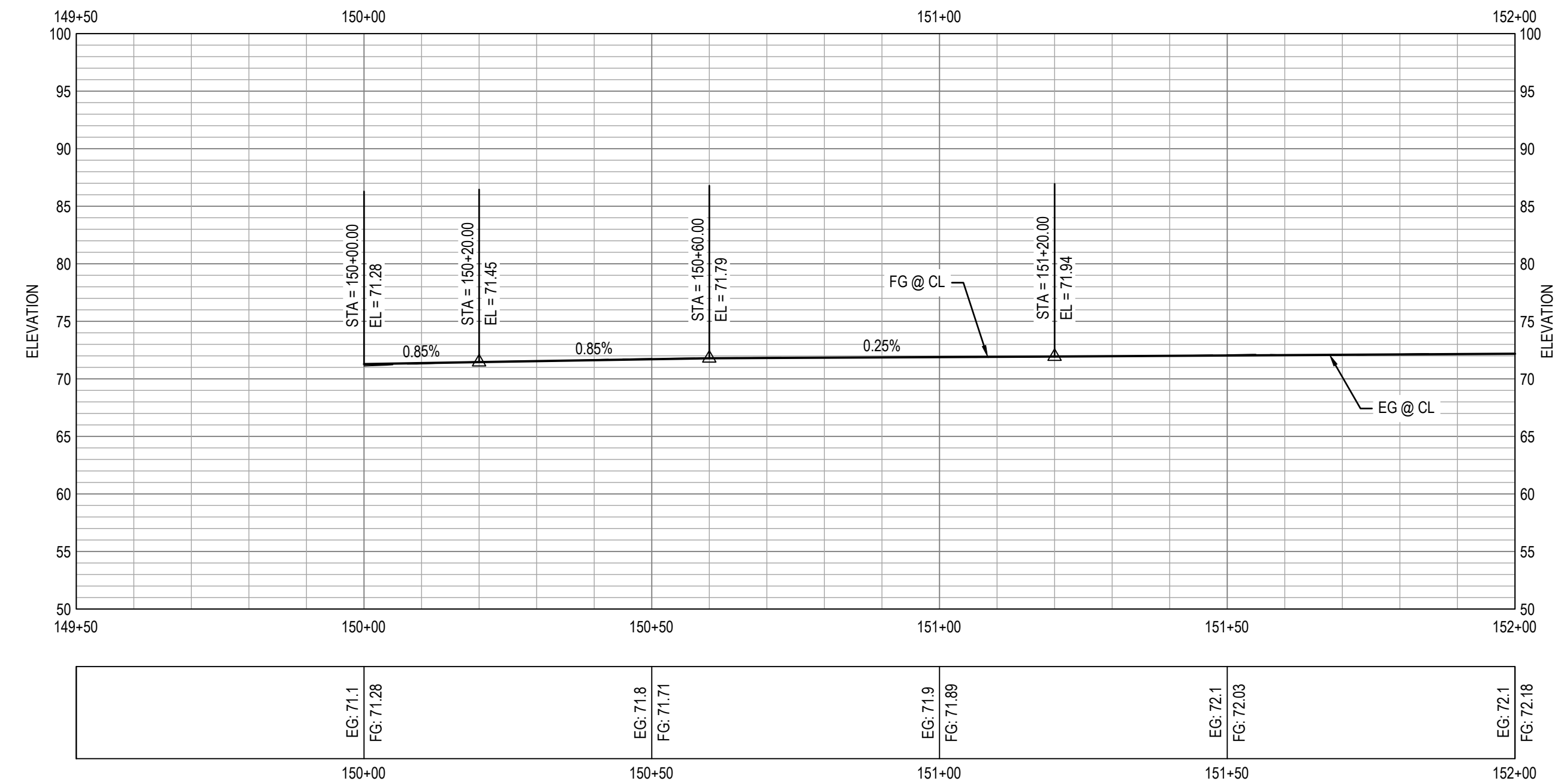
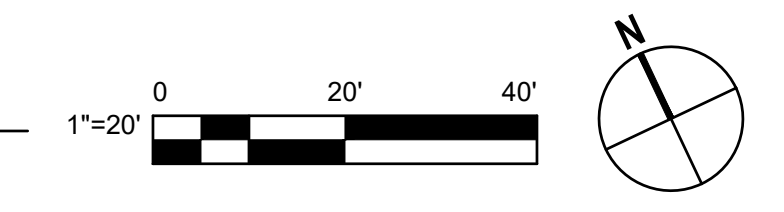
---



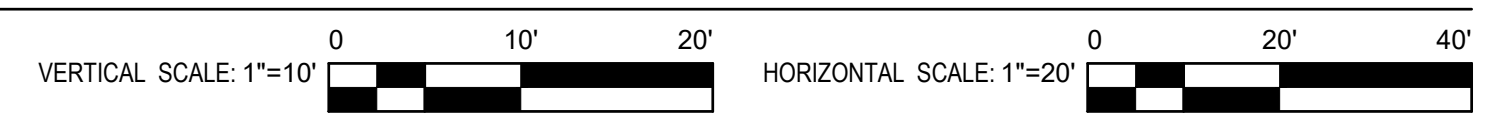
- ### SHEET GENERAL NOTES
- ALL LOCATIONS OF UTILITIES SHOWN ARE APPROXIMATE AND DEPICT UTILITY LOCATIONS AT BEGINNING OF CONSTRUCTION. CONTRACTOR IS RESPONSIBLE TO FIELD VERIFY EXACT LOCATIONS OF ALL UTILITIES PRIOR TO ANY UNDERGROUND WORK.
  - FOR DETAILS ON LOCATIONS OF CURB, ETC. SEE THE CONSTRUCTION DETAILS.
  - FOR RETAINING WALL AND UNDER CROSSING DETAILS. SEE STRUCTURAL PLANS.
  - FOR DEMOLITION AND TREE REMOVAL. SEE EXISTING CONDITIONS AND DEMOLITION PLANS.
  - FOR UNDERGROUND UTILITIES. SEE UTILITY PLANS.
  - SEE P-101 TO P-113 FOR SIGNAGE AND STRIPING PLAN.
  - CONTRACTOR SHALL REPLACE ALL DISTURBED AREAS IN-KIND.
  - CONTRACTOR TO ENSURE POSITIVE DRAINAGE ACROSS THE TRAIL TO AVOID LOCALIZED PONDING ADJACENT TO THE TRAIL.
  - FOR PAVEMENT AND TRAIL STRUCTURAL SECTIONS, SEE GENERAL SHEETS CROSS SECTIONS.

- ### SHEET KEYNOTES
- RAISE UTILITY TO FINISH GRADE.
  - CURB AND GUTTER, CALTRANS TYPE A2-6.
  - MINOR CONCRETE SIDEWALK OR TRAIL. SECTION PER TYPICAL CROSS SECTIONS.
  - CURB, CALTRANS TYPE A1-6.
  - CURB AND GUTTER, CALTRANS TYPE E.
  - CURB, CALTRANS TYPE D.
  - NEW TRAIL LIGHT, SEE ELECTRICAL PLANS.
  - RELOCATED STREET LIGHT, SEE ELECTRICAL PLANS.
  - NEW CAMERA SYSTEM, SEE ELECTRICAL PLANS.
  - TRAFFIC SIGNAL POLE. SEE TRAFFIC SIGNAL MODIFICATION PLAN.
  - INSTALL 6' TALL CHAINLINK FENCE.
  - INSTALL NEW 12' TALL CHAINLINK TENNIS CT FENCE.
  - HMA DIKE, CALTRANS TYPE A.
  - BIORETENTION AREA PER DETAIL ON SW-501.
  - RETAINING CURB PER DETAIL ON C-501.
  - FOR BOULDERS, BENCHES, BIKE RACKS ETC. SEE LANDSCAPE AMENITIES PLAN.
  - MINOR CONCRETE SLOPE PAVING PER DETAIL ON C-501.
  - CONCRETE CHECK DAM PER DETAIL ON C-501.
  - CURB AND GUTTER, CALTRANS TYPE B2-6 MOD.
  - CURB AND GUTTER, CALTRANS TYPE B2-4.
  - CURB, CALTRANS TYPE B1-6.
  - SCI-70 GM TL-2 ON CONCRETE PAD AT 4" CURB HEIGHT PER MANUFACTURER DETAIL.

## 1 IMPROVEMENT PLAN

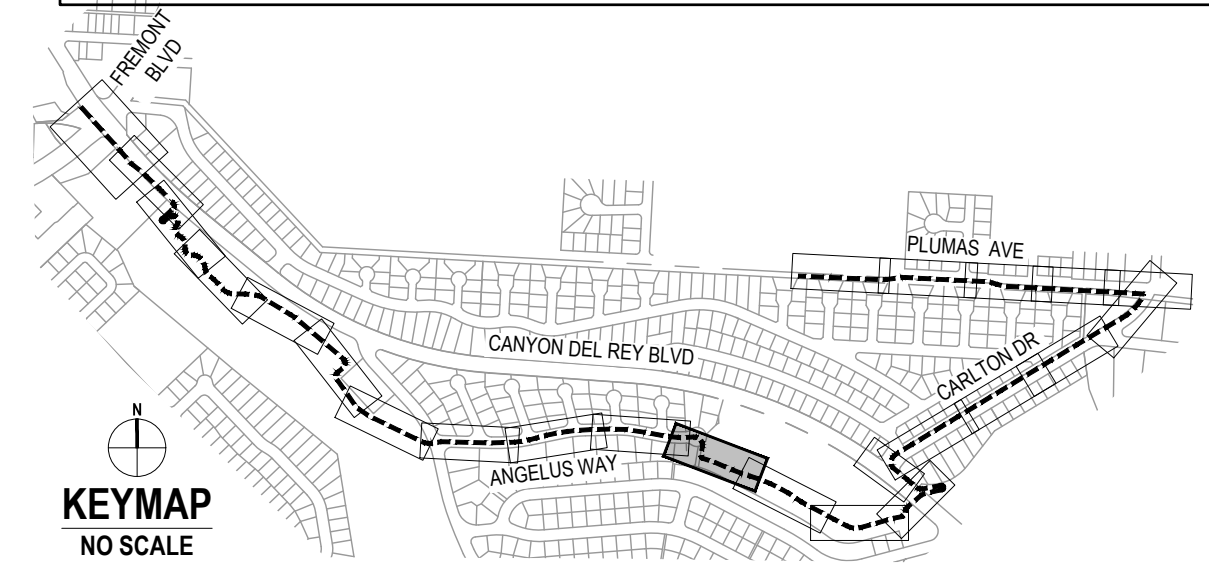


## 2 PROFILE

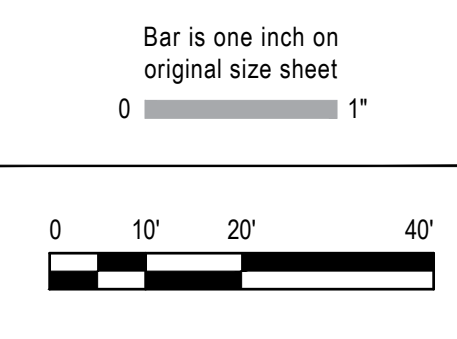


### LEGEND

	MINOR CONCRETE		AGGREGATE BASE (CLASS II)
	HOT MIX ASPHALT		DETECTABLE WARNING SURFACE
	STAMPED MINOR CONCRETE PATTERN SEE LANDSCAPE PLANS		ROCK SLOPE PROTECTION SEE DRAINAGE PLANS
	SLURRY SEAL		DECOMPOSED GRANITE
	GUARDRAIL WITH PICKETS PER DETAIL 2, SHEET S-503		RETAINING WALL
	3-RAIL GUARDRAIL PER DETAIL 1, SHEET S-503		CHAIN LINK FENCE
			GRADING LIMITS
			WOOD FENCE



ADDENDUM #01	SG	01/12/2024
No. Issue	Checked	Approved
Author EM	Drafting Check SG	Project Manager L. VAN PARYS
Designer CO	Design Check SG	Project Director K. VEDULA



**GHD** Inc.  
2200 21st Street  
Sacramento California 95818 USA  
T 1 916 372 6606 F 1 916 372 6616  
www.ghd.com

Conditions of Use  
This document and the ideas and designs incorporated herein, as an instrument of professional service, is the property of GHD. This document may only be used by GHD's client (and any other person who GHD has agreed can use this document) for the purpose for which it was prepared and must not be used by any other person or for any other purpose.



Client  
**TRANSPORTATION AGENCY FOR MONTEREY COUNTY**

Project  
**FORTAG TRAIL PROJECT**

Project No. **11220281** Date **December 1, 2023** Scale **AS SHOWN**

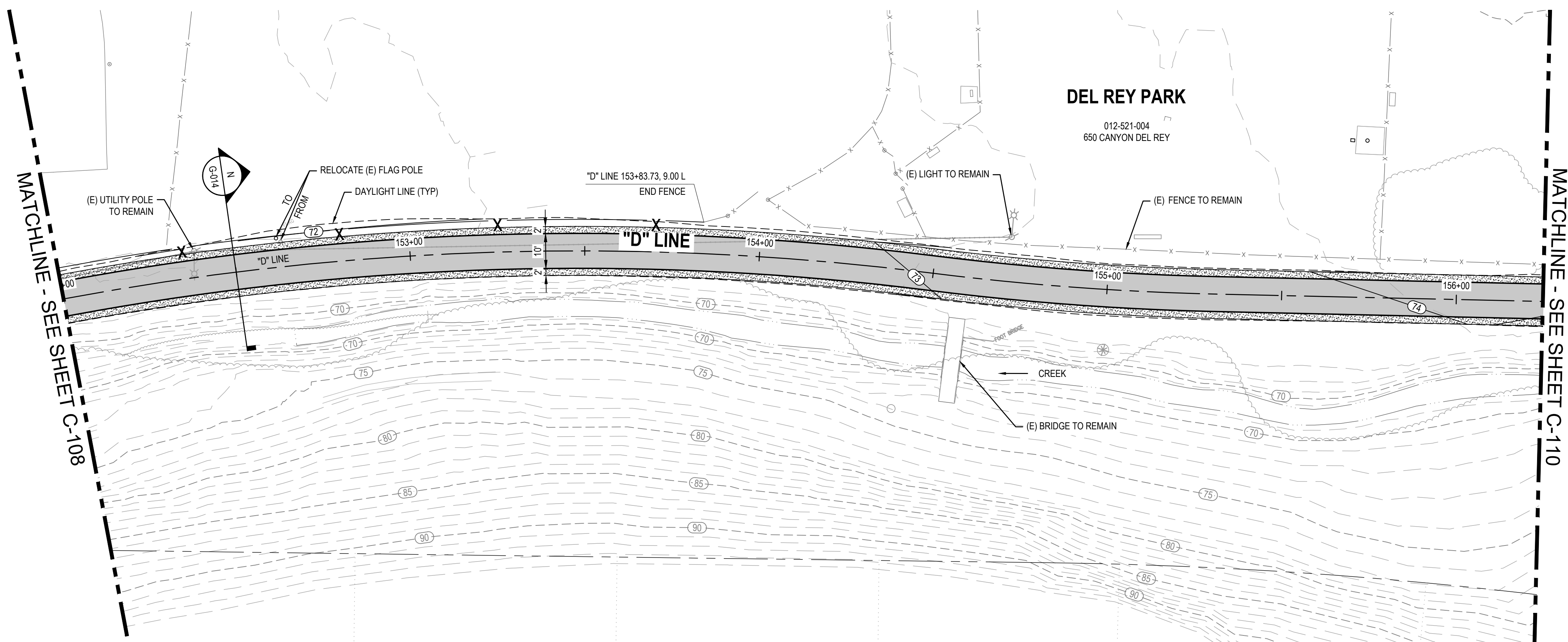
Title **IMPROVEMENT PLAN AND PROFILE-7**

Size **ANSI D**

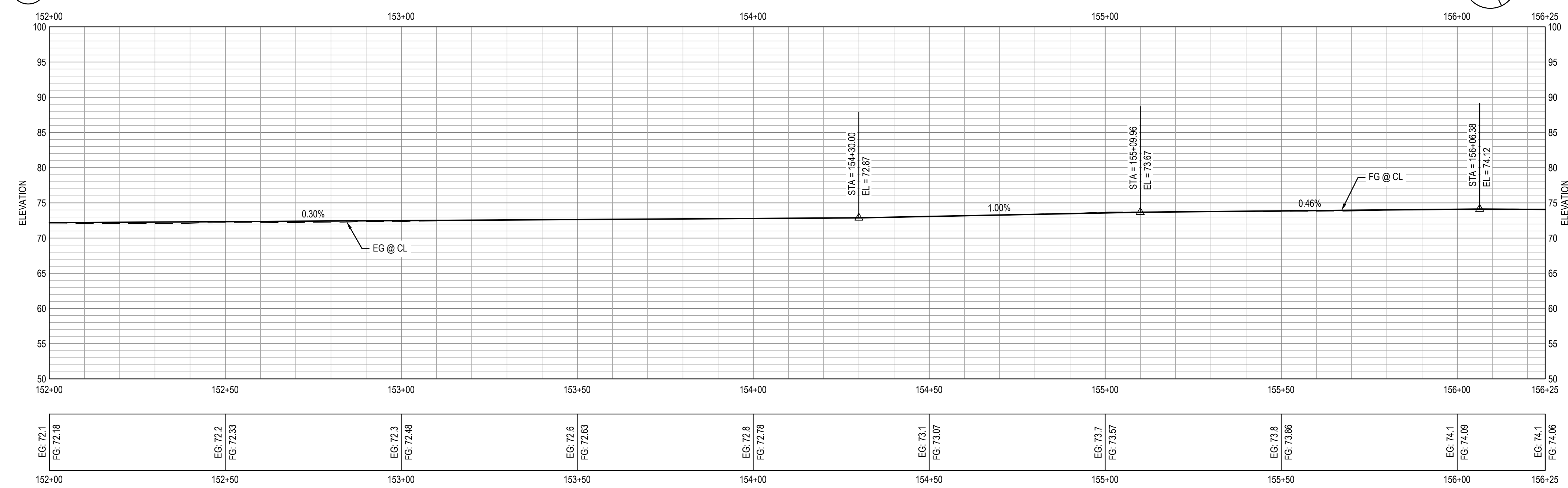
Status Code

Sheet No. **C-108** Sheet 38 of 195

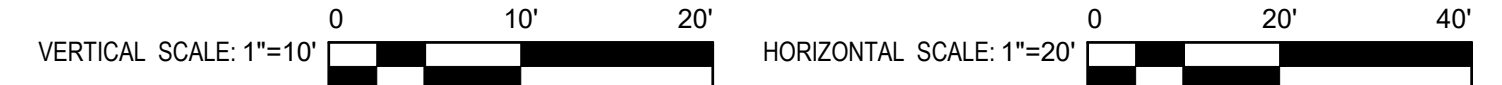




**1 IMPROVEMENT PLAN**



**2 PROFILE**



**SHEET GENERAL NOTES**

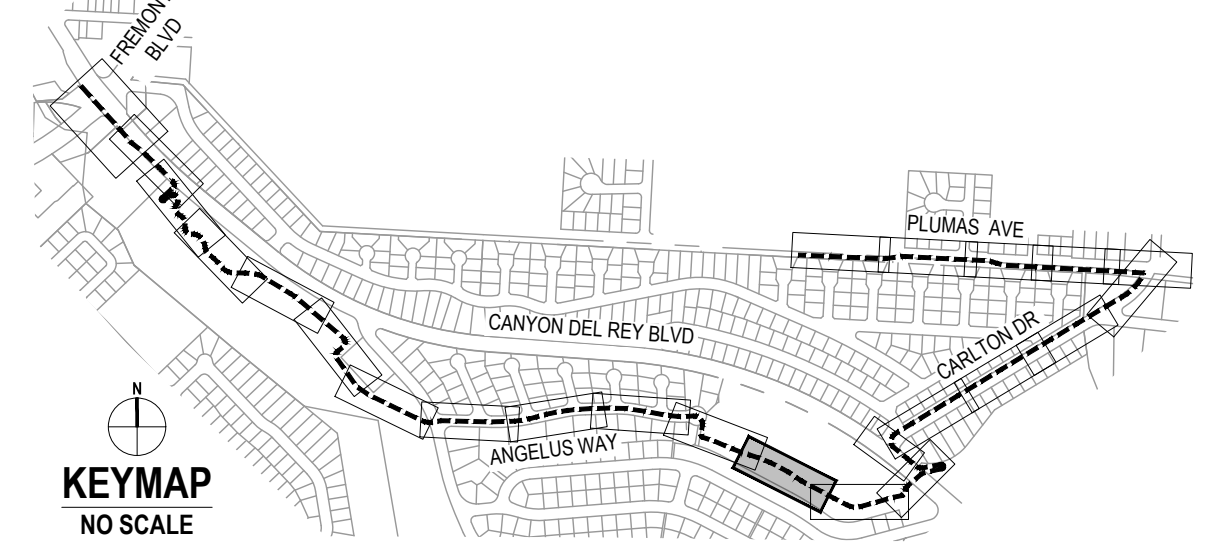
- ALL LOCATIONS OF UTILITIES SHOWN ARE APPROXIMATE AND DEPICT UTILITY LOCATIONS AT BEGINNING OF CONSTRUCTION. CONTRACTOR IS RESPONSIBLE TO FIELD VERIFY EXACT LOCATIONS OF ALL UTILITIES PRIOR TO ANY UNDERGROUND WORK.
- FOR DETAILS ON LOCATIONS OF CURB, ETC. SEE THE CONSTRUCTION DETAILS.
- FOR RETAINING WALL AND UNDER CROSSING DETAILS. SEE STRUCTURAL PLANS.
- FOR DEMOLITION AND TREE REMOVAL. SEE EXISTING CONDITIONS AND DEMOLITION PLANS.
- FOR UNDERGROUND UTILITIES. SEE UTILITY PLANS.
- SEE P-101 TO P-113 FOR SIGNAGE AND STRIPING PLAN.
- CONTRACTOR SHALL REPLACE ALL DISTURBED AREAS IN-KIND.
- CONTRACTOR TO ENSURE POSITIVE DRAINAGE ACROSS THE TRAIL TO AVOID LOCALIZED PONDING ADJACENT TO THE TRAIL.
- FOR PAVEMENT AND TRAIL STRUCTURAL SECTIONS, SEE GENERAL SHEETS CROSS SECTIONS.

**SHEET KEYNOTES**

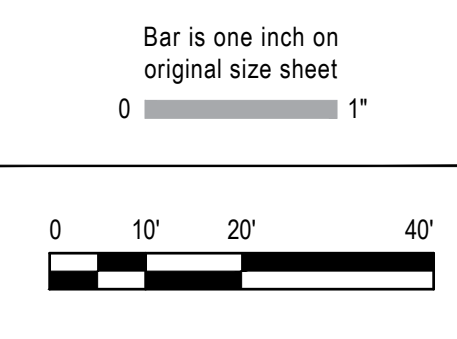
- RAISE UTILITY TO FINISH GRADE.
- CURB AND GUTTER, CALTRANS TYPE A2-6.
- MINOR CONCRETE SIDEWALK OR TRAIL. SECTION PER TYPICAL CROSS SECTIONS.
- CURB, CALTRANS TYPE A1-6.
- CURB, CALTRANS TYPE A1-4.
- CURB AND GUTTER, CALTRANS TYPE E.
- CURB, CALTRANS TYPE D.
- NEW TRAIL LIGHT, SEE ELECTRICAL PLANS.
- RELOCATED STREET LIGHT, SEE ELECTRICAL PLANS.
- NEW CAMERA SYSTEM, SEE ELECTRICAL PLANS.
- TRAFFIC SIGNAL POLE. SEE TRAFFIC SIGNAL MODIFICATION PLAN.
- INSTALL 6' TALL CHAINLINK FENCE.
- INSTALL NEW 12' TALL CHAINLINK TENNIS CT FENCE.
- HMA DIKE, CALTRANS TYPE A.
- BIORETENTION AREA PER DETAIL ON SW-501.
- RETAINING CURB PER DETAIL ON C-501.
- FOR BOULDERS, BENCHES, BIKE RACKS ETC. SEE LANDSCAPE AMENITIES PLAN.
- MINOR CONCRETE SLOPE PAVING PER DETAIL ON C-501.
- CONCRETE CHECK DAM PER DETAIL ON C-501.
- CURB AND GUTTER, CALTRANS TYPE B2-6 MOD.
- CURB AND GUTTER, CALTRANS TYPE B2-4.
- CURB, CALTRANS TYPE B1-6.
- SCI-70 GM TL-2 ON CONCRETE PAD AT 4" CURB HEIGHT PER MANUFACTURER DETAIL.

**LEGEND**

	MINOR CONCRETE		AGGREGATE BASE (CLASS II)
	HOT MIX ASPHALT		DETECTABLE WARNING SURFACE
	STAMPED MINOR CONCRETE PATTERN SEE LANDSCAPE PLANS		ROCK SLOPE PROTECTION SEE DRAINAGE PLANS
	SLURRY SEAL		DECOMPOSED GRANITE
	GUARDRAIL WITH PICKETS PER DETAIL 2, SHEET S-503		RETAINING WALL
	3-RAIL GUARDRAIL PER DETAIL 1, SHEET S-503		CHAIN LINK FENCE
			GRADING LIMITS
			WOOD FENCE



ADDENDUM #01	SG	01/12/2024	
No. Issue	Checked	Approved	Date
Author EM	Drafting Check SG	Project Manager L. VAN PARYS	
Designer CO	Design Check SG	Project Director K. VEDULA	



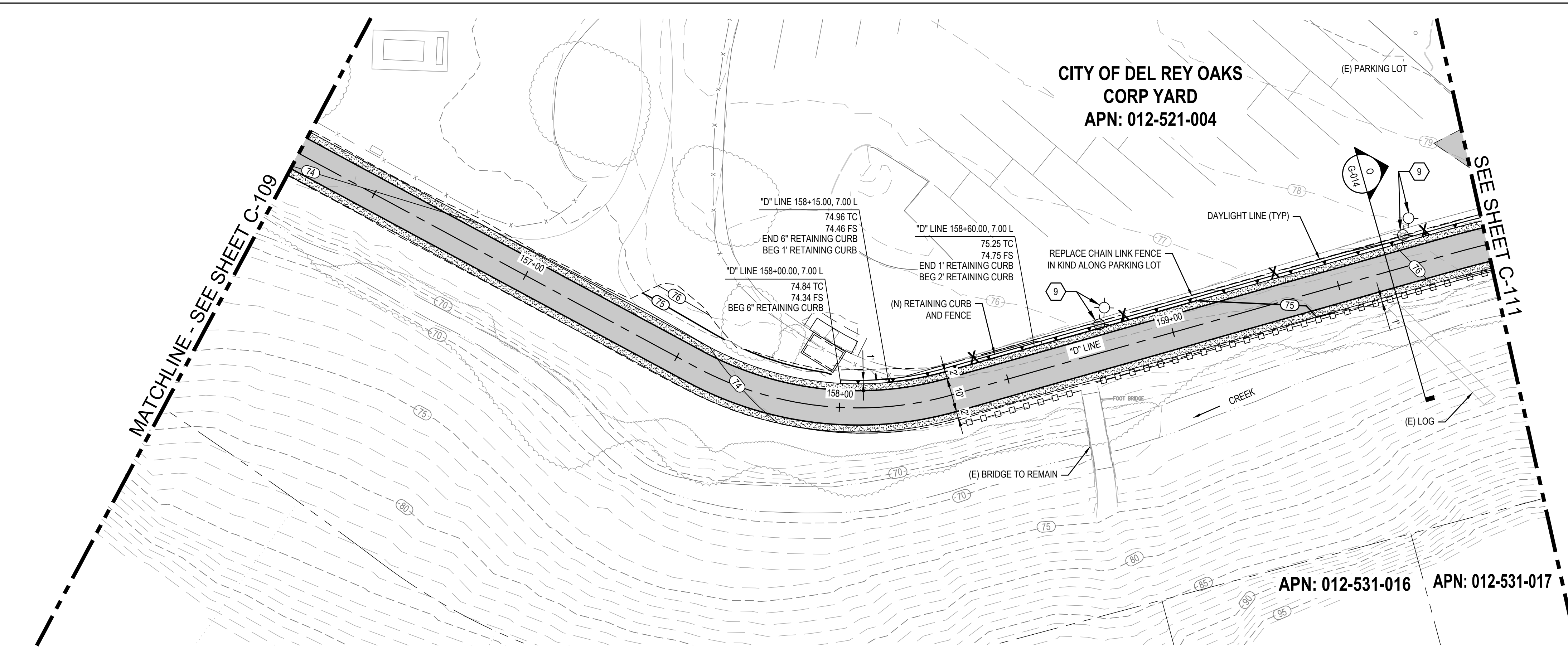
**GHD** Inc.  
2200 21st Street  
Sacramento California 95818 USA  
T 1 916 372 6606 F 1 916 372 6616  
www.ghd.com

Conditions of Use  
This document and the ideas and designs incorporated herein, as an instrument of professional service, is the property of GHD. This document may only be used by GHD's client (and any other person who GHD has agreed can use this document) for the purpose for which it was prepared and must not be used by any other person or for any other purpose.

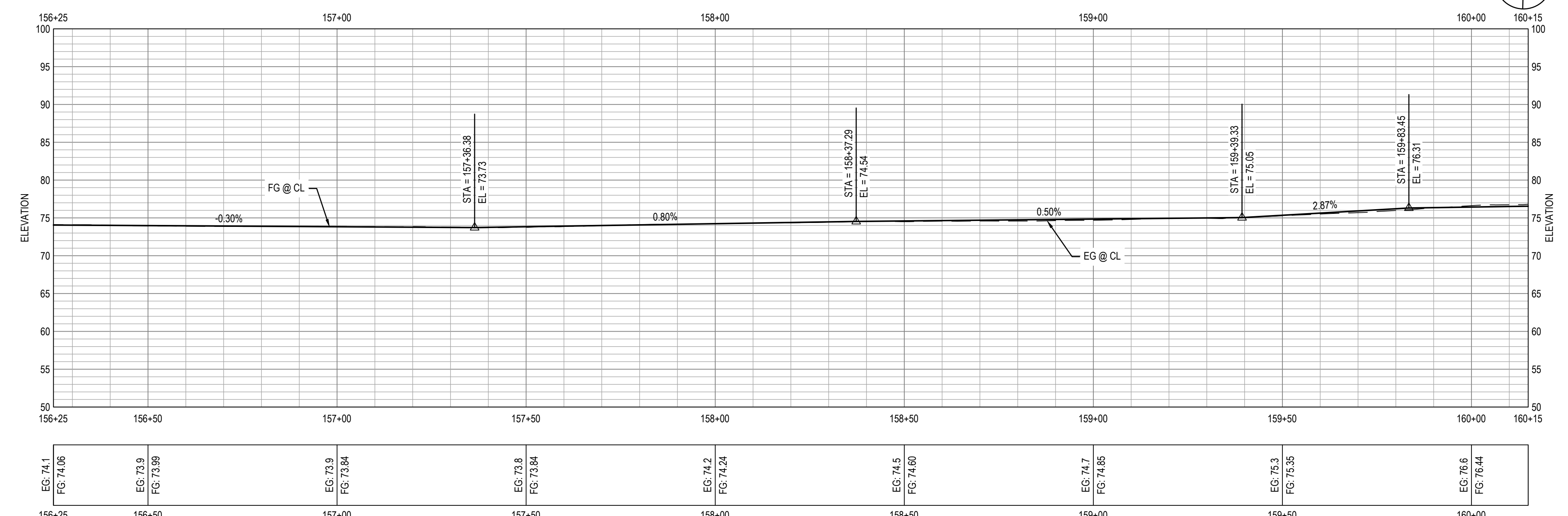


Client <b>TRANSPORTATION AGENCY FOR MONTEREY COUNTY</b>	Title <b>IMPROVEMENT PLAN AND PROFILE-8</b>
Project <b>FORTAG TRAIL PROJECT</b>	Scale <b>AS SHOWN</b>
Project No. <b>11220281</b>	Date <b>December 1, 2023</b>

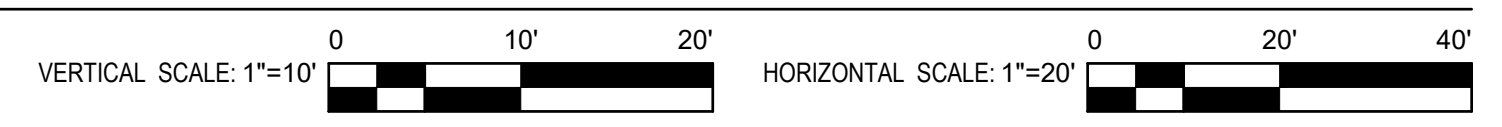
Size <b>ANSI D</b>	Status Code
Sheet No. <b>C-109</b>	Sheet <b>39 of 195</b>



**1 IMPROVEMENT PLAN**



**2 PROFILE**



**SHEET GENERAL NOTES**

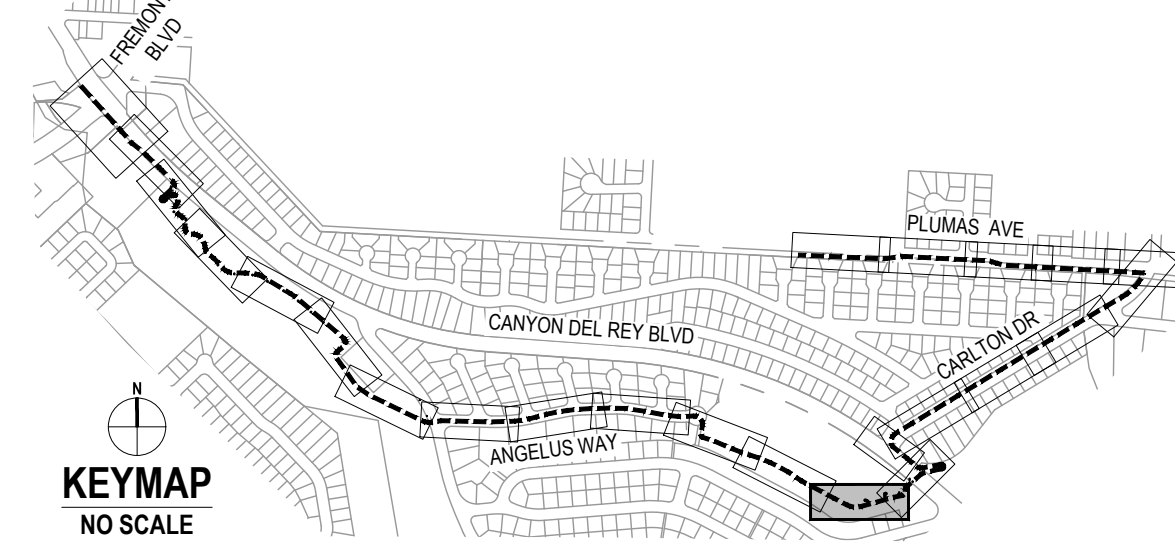
- ALL LOCATIONS OF UTILITIES SHOWN ARE APPROXIMATE AND DEPICT UTILITY LOCATIONS AT BEGINNING OF CONSTRUCTION. CONTRACTOR IS RESPONSIBLE TO FIELD VERIFY EXACT LOCATIONS OF ALL UTILITIES PRIOR TO ANY UNDERGROUND WORK.
- FOR DETAILS ON LOCATIONS OF CURB, ETC. SEE THE CONSTRUCTION DETAILS.
- FOR RETAINING WALL AND UNDER CROSSING DETAILS. SEE STRUCTURAL PLANS.
- FOR DEMOLITION AND TREE REMOVAL. SEE EXISTING CONDITIONS AND DEMOLITION PLANS.
- FOR UNDERGROUND UTILITIES. SEE UTILITY PLANS.
- SEE P-101 TO P-113 FOR SIGNAGE AND STRIPING PLAN.
- CONTRACTOR SHALL REPLACE ALL DISTURBED AREAS IN-KIND.
- CONTRACTOR TO ENSURE POSITIVE DRAINAGE ACROSS THE TRAIL TO AVOID LOCALIZED PONDING ADJACENT TO THE TRAIL.
- FOR PAVEMENT AND TRAIL STRUCTURAL SECTIONS, SEE GENERAL SHEETS CROSS SECTIONS.

**SHEET KEYNOTES**

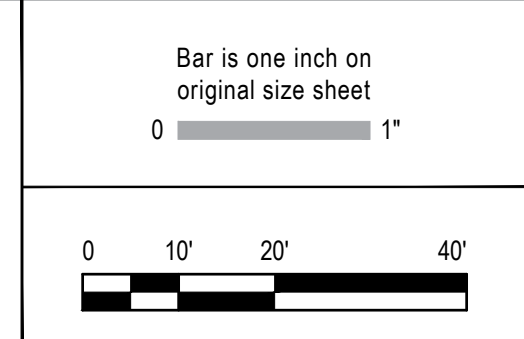
- RAISE UTILITY TO FINISH GRADE.
- CURB AND GUTTER, CALTRANS TYPE A2-6.
- MINOR CONCRETE SIDEWALK OR TRAIL. SECTION PER TYPICAL CROSS SECTIONS.
- CURB, CALTRANS TYPE A1-6.
- CURB, CALTRANS TYPE A1-4.
- CURB AND GUTTER, CALTRANS TYPE E.
- CURB, CALTRANS TYPE D.
- NEW TRAIL LIGHT, SEE ELECTRICAL PLANS.
- RELOCATED STREET LIGHT, SEE ELECTRICAL PLANS.
- NEW CAMERA SYSTEM, SEE ELECTRICAL PLANS.
- TRAFFIC SIGNAL POLE. SEE TRAFFIC SIGNAL MODIFICATION PLAN.
- INSTALL 6' TALL CHAINLINK FENCE.
- INSTALL NEW 12' TALL CHAINLINK TENNIS CT FENCE.
- HMA DIKE, CALTRANS TYPE A.
- BIORETENTION AREA PER DETAIL ON SW-501.
- RETAINING CURB PER DETAIL ON C-501.
- FOR BOULDERS, BENCHES, BIKE RACKS ETC. SEE LANDSCAPE AMENITIES PLAN.
- MINOR CONCRETE SLOPE PAVING PER DETAIL ON C-501.
- CONCRETE CHECK DAM PER DETAIL ON C-501.
- CURB AND GUTTER, CALTRANS TYPE B2-6 MOD.
- CURB AND GUTTER, CALTRANS TYPE B2-4.
- CURB, CALTRANS TYPE B1-6.
- SCI-70 GM TL-2 ON CONCRETE PAD AT 4" CURB HEIGHT PER MANUFACTURER DETAIL.

**LEGEND**

	MINOR CONCRETE		AGGREGATE BASE (CLASS II)
	HOT MIX ASPHALT		DETECTABLE WARNING SURFACE
	STAMPED MINOR CONCRETE PATTERN SEE LANDSCAPE PLANS		ROCK SLOPE PROTECTION SEE DRAINAGE PLANS
	SLURRY SEAL		DECOMPOSED GRANITE
	GUARDRAIL WITH PICKETS PER DETAIL 2, SHEET S-503		RETAINING WALL
	3-RAIL GUARDRAIL PER DETAIL 1, SHEET S-503		CHAIN LINK FENCE
			GRADING LIMITS
			WOOD FENCE



ADDENDUM #01	SG	01/12/2024
No. Issue	Checked	Approved
Author EM	Drafting Check SG	Project Manager L. VAN PARYS
Designer CO	Design Check SG	Project Director K. VEDULA



**GHD** Inc.  
2200 21st Street  
Sacramento California 95818 USA  
T 1 916 372 6606 F 1 916 372 6616  
www.ghd.com

Conditions of Use  
This document and the ideas and designs incorporated herein, as an instrument of professional service, is the property of GHD. This document may only be used by GHD's client (and any other person who GHD has agreed can use this document) for the purpose for which it was prepared and must not be used by any other person or for any other purpose.



Client <b>TRANSPORTATION AGENCY FOR MONTEREY COUNTY</b>	Title <b>IMPROVEMENT PLAN AND PROFILE-9</b>
Project <b>FORTAG TRAIL PROJECT</b>	Scale <b>AS SHOWN</b>
Project No. <b>11220281</b>	Date <b>December 1, 2023</b>

Size <b>ANSI D</b>	Status Code
Sheet No. <b>C-110</b>	Sheet <b>40 of 195</b>