



TECHNICAL ADVISORY COMMITTEE

**Thursday, March 1, 2018
9:30 AM**

**Transportation Agency for Monterey County Conference Room
55-B Plaza Circle, Salinas
Transportation Agency Conference Room
AGENDA**

Complete agenda packets are on display at the Transportation Agency for Monterey County office and at these public libraries: Carmel, Monterey, Salinas Steinbeck Branch, Seaside, Prunedale, and King City. Any person who has a question concerning an item on this agenda may call the Agency Secretary to make inquiry concerning the nature of the item described on the agenda. Please recycle this agenda.

1. ROLL CALL

Call to order and self-introductions. According to Transportation Agency and Committee bylaws, Committee membership consists of representatives from the Transportation Agency voting and ex-officio members, and other agencies that may be appointed by the Transportation Agency. Currently the Committee membership includes representatives from 12 Cities, the County, MST, Caltrans, City of Watsonville, the Air District, and AMBAG, for a total of 18 members. Five members of the Technical Advisory Committee, representing voting members of the Transportation Agency Board of Directors, constitute a quorum for transaction of the business of the committee. If you are unable to attend, please contact the Committee coordinator. Your courtesy to the other members to assure a quorum is appreciated.

2. PUBLIC COMMENTS

Any member of the public may address the Committee on any item not on the agenda but within the jurisdiction of the Committee. Each member of the public is allotted with three minutes to address any concerns. Comments on items on today's agenda may be given when that agenda item is discussed.

3. BEGINNING OF CONSENT AGENDA

Approve the staff recommendations for items listed below by majority vote with one motion. Any member may pull an item off the Consent Agenda to be moved to the end of the **CONSENT AGENDA** for discussion and action.

- 3.1 **APPROVE** the draft Technical Advisory Committee Minutes for February 1, 2018.

- Zeller

END OF CONSENT AGENDA

4. **RECEIVE** presentation from Monterey-Salinas Transit staff on the Salinas Valley Express Transit Corridor Study.

- Rheinheimer

The Salinas Valley Express Transit Corridor Study will identify ways to advance Line 23 (Salinas to King City) to be a rapid transit option with travel times comparable to the automobile. The study will identify primary boarding locations and key sites to implement transit information technology to aid in the successful implementation of a rapid transit corridor with limited stops and 1/2 hour headways during the peak travel commute.

5. **RECEIVE** update on the Monterey County Active Transportation Plan; and **PROVIDE** input on the draft ranked project lists.

- Murillo

The Active Transportation Plan is an update of the 2011 Bicycle and Pedestrian Master Plan. The focus of the 2017 Plan update is to meet the State Active Transportation Program guidelines, incorporate innovative bicycle facility designs, and promote high priority projects. Staff will present an update on the project ranking process.

6. Caltrans Updates

1. **RECEIVE** update on the memorandum on the streamlined Permit Engineering Evaluation Report (PEER) process;
2. **RECEIVE** update on the State Highway Operation and Protection Program (SHOPP) project list.

- Caltrans Staff

7. ANNOUNCEMENTS

8. ADJOURN

**Next Committee meeting will be on
Thursday, April 5, 2018 at 9:30 a.m.
TAMC Conference Room
55-B Plaza Circle, Salinas**

REMINDER: If you have any items for the next Committee Agenda, please submit them to: Transportation Agency for Monterey County; Attn: Hank Myers; 55-B Plaza Circle, Salinas, CA 93901, **email:** hank@tamcmonterey.org

The Committee Agenda will be prepared by Agency staff and will close at noon nine (9) working days before the regular meeting. Any member may request in writing an item to appear on the agenda. The request shall be made by the agenda deadline and any supporting papers must be furnished by that time or be readily available.

Documents relating to an item on the open session that are distributed to the Committee less than 72 hours prior to the meeting shall be available for public inspection at the office of the Transportation Agency for Monterey County, 55-B Plaza Circle, Salinas, CA. Documents distributed to the Committee at the meeting by staff will be available at the meeting; documents distributed to the Committee by members of the public shall be made available after the meeting.

**Transportation Agency for Monterey County
55-B Plaza Circle, Salinas, CA 93901-2902
Monday thru Friday 8:00 a.m. - 5:00 p.m.
TEL: 831-775-0903
FAX: 831-775-0897**

If requested, the agenda shall be made available in appropriate alternative formats to persons with a disability, as required by Section 202 of the Americans with Disabilities Act of 1990 (42 USC Sec. 12132), and the federal rules and regulations adopted in implementation thereof. Individuals requesting a disability-related modification or accommodation, including auxiliary aids or services, may contact Transportation Agency at 831-775-0903. Auxiliary aids or services include wheelchair accessible facilities, sign language interpreters, Spanish Language interpreters and printed materials, and printed materials in large print, Braille or on disk. These requests may be made by a person with a disability who requires a modification or accommodation in order to participate in the public meeting, and should be made at least 72 hours before the meeting. All reasonable efforts will be made to accommodate the request.

CORRESPONDENCE, MEDIA CLIPPINGS, and REPORTS - No items this month



Memorandum

To: Technical Advisory Committee
From: Michael Zeller, Principal Transportation Planner
Meeting Date: March 1, 2018
Subject: **Draft Technical Advisory Committee Minutes - February 1, 2018**

RECOMMENDED ACTION:

APPROVE the draft Technical Advisory Committee Minutes for February 1, 2018.

ATTACHMENTS:

- ▢ Draft TAC Minutes - Feb 1, 2018

TECHNICAL ADVISORY COMMITTEE MINUTES

**Meeting Held At
Transportation Agency for Monterey County
Conference Room 55-B Plaza Circle, Salinas**

Minutes of Thursday, February 1, 2018

COMMITTEE MEMBERS	MAR 17	APR 17	MAY 17	JUN 17	AUG 17	SEP 17	OCT 17	NOV 17	JAN 18	FEB 18
R. Harary, Carmel-by-the-Sea (S. Friedrichsen)		<i>C</i>		<i>C</i>	P	P	P	<i>C</i>	P	
D. Pick, Del Rey Oaks		<i>A</i>	P	<i>A</i>	P	P		<i>A</i>	P	
P. Dobbins Gonzales Vice Chair (R. Mendez, J. Lipe)		<i>N</i>	P	<i>N</i>	P		P	<i>N</i>	P	P
M. Steinmann, Greenfield		<i>C</i>	P	<i>C</i>				<i>C</i>		P
O. Hurtado, King City (S. Adams)		<i>E</i>	P	<i>E</i>	P	P	P	<i>E</i>	P	P
B. McMinn, Marina (E. Delos Santos)		<i>L</i>	P	<i>L</i>	P	P	P	<i>L</i>	P	P
A. Renny, Monterey (F. Roveri)		<i>L</i>	P	<i>L</i>	P	P	P	<i>L</i>	P(A)	P
D. Gho, Pacific Grove (M. Brodeur)		<i>E</i>	P	<i>E</i>	P	P	P	<i>E</i>	P	P
J. Serrano, Salinas, (R. Russell, V. Gutierrez)		<i>D</i>	P	<i>D</i>	P	P	P	<i>D</i>		P
T. Bodem, Sand City					P	P				P
R. Riedl, Seaside (L. Llantero)			P		P	P(A)			P	P
D. Wilcox, Soledad (M. McHatten)									P	
E. Saavedra, MCPW Chair (M. Qureshi)			P		P	P	P			P
Vacant , Monterey County Economic Development										
H. Adamson, AMBAG (S. Vienna)			P(A)			P(A)	P(A)		P(A)	P(A)
O. Ochoa-Monroy, Caltrans (K. McClendon)			P(A)		P(A)	P(A)				P(A)
A. Spear, CSUMB (M. McCluney)					P		P(A)			P(A)
A. Romero, MBUAPCD										
J. Brinkmann, FORA (P. Said)										
L. Rheinheimer, MST (M. Overmeyer)			P(A)		P(A)	P	P		P	P

STAFF	MAR 17	APR 17	MAY 17	JUN 17	AUG 17	SEP 17	OCT 17	NOV 17	JAN 18	FEB 18
D. Hale, Exec. Director										
T. Muck, Dep. Exec. Director			P		P	P	P		P	
H. Myers, Sr. Transp. Planning Engineer			P		P		P		P	P
M. Zeller, Principal Transp. Planner					P	P	P		P	P
C. Watson, Principal Transp. Planner									P	
V. Murillo, Asst. Transp. Planner						P				
Theresa Wright, Public Outreach Coordinator					P	P	P			
G. Leonard, Transportation Planner			p		P				P	
Rich Deal, Principal Engineer										P

1. ROLL CALL

Chair Enrique Saavedra, County of Monterey, called the meeting to order at 9:32 am. Introductions were made and a quorum was established.

1.1 ADDITIONS OR CORRECTIONS TO AGENDA

None.

2. PUBLIC COMMENTS

None.

3. BEGINNING OF CONSENT AGENDA

Motion to approve the Consent Agenda

M/S/C Hurtado / McMinn / unanimous

3.1 APPROVE the minutes of the Technical Advisory Committee meeting of January 4, 2018.

END OF CONSENT AGENDA

4. 2018 REGIONAL DEVELOPMENT IMPACT FEE UPDATE

The Committee received a presentation on the 2018 Regional Development Impact Fee Nexus Study Update.

Michael Zeller, Principal Transportation Planner, presented that as part of the Joint Powers Agreement that established the program and state law, the Agency is required to conduct a major update the fee program once every five years. In August 2017, the TAMC Board approved the selection of Wood Rodgers to conduct the technical work necessary to

update the regional fees to reflect any changes that may have occurred in the past five years, such as: updates to population, employment and housing projections utilized in the regional travel forecast model, the expected pace of development, changes in land use plans including general plan updates, project need and cost, and population growth projections. Once Agency staff confirms the list of improvement projects, the next steps in the update process will be for Wood Rodgers to conduct additional model runs assuming the construction of the proposed improvement projects to evaluate network system performance, to prepare planning-level project cost updates, and to develop an updated draft regional development impact fee schedule. This will culminate in a final 2018 Regional Fee Nexus Study Update report.

Rick Riedl, City of Seaside, requesting that the Agency include the Highway 1 / Monterey Road interchange in the analysis. Staff responded that the project would be added to the list for analysis.

John Olejnik, Caltrans District 5, recommended that the Agency look at also including the City of Marina's 2nd Avenue Extension project since it is also included in FORA's Capital Improvement Program. He also recommended that staff coordinate with Caltrans on the concurrence letter for the fee program. Staff indicated that we would review the City of Marina's project for inclusion and coordinate closely with Caltrans for the concurrence letter on the Nexus Study Update.

5. MEASURE X SAFE ROUTES TO SCHOOLS PROGRAM

The Committee received a presentation and provided input on the draft Measure X Safe Routes to School Program.

Ariana Green, Associate Transportation Planner, presented that the Measure X Safe Routes to School program is intended to reverse these trends by funding projects and programs that improve children's health by making walking and bicycling safer and easier. The program will result in projects that provide the following benefits: improved safety for children walking and biking to school; better connections between schools, residential areas and vocational training programs; enhanced air quality; and healthier transportation choices for school children and parents. The Measure X Safe Routes to School Program is consistent with local, State and Federal goals to provide safe access to and from school and will apply the 6 E's to ensure programs and projects funded are comprehensive and inclusive. The Six E's of Safe Routes to School are: evaluation, engineering, education, encouragement, enforcement and equity. The proposed program budget includes equal support for both infrastructure and non-infrastructure projects that work toward the 6 E's. The Program is funded through a combination of local, state and federal funds. The draft Measure X Safe Routes to School Guidelines proposes to encourage leveraging of funds by providing grant support including grant writing, conceptual design services and grant matching funds to agencies and organizations applying for state and federal funding.

Lisa Rheinheimer, Monterey-Salinas Transit, recommended including Parent-Teacher Association groups in the discussion. Staff responded that we would include those groups.

6. ANNOUNCEMENTS

Lisa Rheinheimer, MST, announced that MST will be reaching out to each of the jurisdictions to schedule presentations to their councils in February and March.

Sean Vienna, AMBAG, announced that the public comments for the MTP/ RTP EIR closes on Monday.

7. ADJOURN

The meeting was adjourned at 10:30 am.



Memorandum

To: Bicycle and Pedestrian Facilities Advisory Committee
From: Virginia Murillo, Transportation Planner
Meeting Date: March 1, 2018
Subject: Salinas Valley Express Transit Corridor Study

RECOMMENDED ACTION:

RECEIVE presentation from Monterey-Salinas Transit staff on the Salinas Valley Express Transit Corridor Study.

SUMMARY:

The Salinas Valley Express Transit Corridor Study will identify ways to advance Line 23 (Salinas to King City) to be a rapid transit option with travel times comparable to the automobile. The study will identify primary boarding locations and key sites to implement transit information technology to aid in the successful implementation of a rapid transit corridor with limited stops and 1/2 hour headways during the peak travel commute.

FINANCIAL IMPACT:

This item has no financial impact to the TAMC budget.

MST was successful in receiving a grant from Caltrans under their Sustainable Communities grant program in the amount of \$132,800 for this Salinas Valley Express Transit Corridor Study.

DISCUSSION:

Approximately 67,000 people live in the rural South County incorporated cities and unincorporated communities. The same area is expected to see the population increase by over 45% by 2035 (2035 Metropolitan Transportation Plan/Sustainable Communities Strategy, AMBAG 2014). Existing transportation infrastructure is limited and needs to be improved to keep pace with growth in the area.

MST's Line 23 is the primary transit bus service connecting rural communities in southern Monterey County to Salinas where passengers can transfer to buses with connections to other parts of the region.

Line 23 supports nearly 200,000 passenger boardings annually. The 69-mile route has over 75 bus stops, and it can take over 2.5 hours to travel from one end to the other. A more direct route with limited stops is needed to provide rural South County residents with a more efficient way to access employment, education, and medical appointments in the more urbanized areas of the county.

MST's Salinas Valley Express Transit Corridor Study will analyze this corridor to identify key locations for technology and infrastructure improvements that will facilitate a much needed express bus service along the Salinas Valley. This study is needed to outline a path to improve transit service in a way that is equitable and will meet the transportation needs of the growing population. MST staff will present an overview and scope of the study.



TRANSPORTATION AGENCY FOR MONTEREY COUNTY

Memorandum

To: Technical Advisory Committee
From: Virginia Murillo, Transportation Planner
Meeting Date: March 1, 2018
Subject: **Monterey County Active Transportation Plan**

RECOMMENDED ACTION:

RECEIVE update on the Monterey County Active Transportation Plan; and **PROVIDE** input on the draft ranked project lists.

SUMMARY:

The Active Transportation Plan is an update of the 2011 Bicycle and Pedestrian Master Plan. The focus of the 2017 Plan update is to meet the State Active Transportation Program guidelines, incorporate innovative bicycle facility designs, and promote high priority projects. Staff will present an update on the project ranking process.

FINANCIAL IMPACT:

The Plan will position high priority projects to be more competitive for grant funding, such as the State's Active Transportation Program. The upcoming ATP cycle funding estimate is \$438 million for FY2019/20 to FY2022/23.

Staff time for the development of the Plan is included in the TAMC budget under work element 6145 (Bike/Ped Plan - Active Transportation Plan). Alta Planning + Design's contract of \$124,891 is included in the TAMC budget under work element 6550 (Complete Streets Project Implementation).

DISCUSSION:

The Active Transportation Plan will identify high priority bicycle and pedestrian projects in accordance with the State guidelines. In addition, this effort will also focus on analyzing key gaps in the existing and proposed bicycle and pedestrian networks, identifying opportunity sites for innovative bicycle facility design, and designating areas for enhanced regional and local connectivity.

TAMC staff collected stakeholder and public input from Spring 2016 to Winter 2016. In May 2016,

Committee members from the Bicycle and Pedestrian Committee and the Technical Advisory Committee participated in a mapping activity to identify bicycle and pedestrian improvements throughout Monterey County. In August 2016, Committee members provided input on the list of projects identified in the May mapping exercise. From September to December 2016, TAMC staff set up an online mapping public input tool. Members of the public provided feedback on: barriers to bicycling/walking, routes that they currently walk/bike, and routes that they would like to bike/walk if improvements were made. Approximately 300 people submitted 430 comments via the Wikimapping tool. Staff collaborated with the Monterey County Health Department to gather input from their Greenfield Leadership and Civic Engagement group. Staff also collaborated with the City of Gonzales to host a South County public workshop for the Plan in December 2016.

Since the public outreach phase of this project, TAMC staff has met with city and county staff to review the comments received during the public outreach phase and to discuss city priorities. TAMC staff has also refined the project ranking criteria to develop draft ranked project lists for each of the Monterey County jurisdictions. The refined project criteria (**attached**) reflect input that staff obtained from both the Bicycle and Pedestrian Committee and the Technical Advisory Committee, but includes a measurement methodology and data sources as well as a refined scale for how points are distributed among these categories:

- Safety
- Connectivity
- Comfort
- Active Transportation Trips (Demand)
- Equity
- Complete Streets Opportunity projects
- Quality Facilities

Staff has developed draft project list rankings for the proposed active transportation plan improvements. An interactive map of the projects as well as draft ranked project lists for the cities of Carmel-by-the-Sea, Del Rey Oaks, Gonzales, Greenfield, King City, Marina, Monterey, Pacific Grove, Salinas, Sand City and Soledad are posted on the Active Transportation Plan website.

Staff will be uploading the remaining draft project lists and the overall Monterey County list as they are available for the remaining jurisdictions, Seaside and Monterey County, on the Active Transportation Plan website **as web attachments**:

<http://www.tamcmonterey.org/programs/bike-pedestrian/bike-ped-plan/>

High-level planning cost estimates have been developed by Alta Planning + Design, and these are also posted on the Active Transportation Plan website.

Staff requests Committee input on these draft ranked lists, and the proposed high-priority projects. The purpose of the ranking exercise is to identify high-priority projects. TAMC recently contracted with Alta Planning + Design to develop conceptual designs for up to 15 high-priority projects throughout the County. Alta Planning + Design will also develop cost estimates for these projects, and for the remaining projects in the Plan.




ATTACHMENTS:

- Project Ranking Criteria

WEB ATTACHMENTS:

[**Active Transportation Plan**](#)

**Monterey County Active Transportation Plan
Ranking Methodology**

Criteria	Measurement Methodology	Data Source	Notes
<p>Safety (20 points) Addresses a location with a high bicycle and pedestrian collision history, or addresses a location that is associated with greater cyclist or pedestrian stress such as streets with higher motor vehicle volumes and/or posted speeds.</p>	<p>UC Berkeley TIMS: 1 or more fatalities or severe injury collisions at project location (5 points); 2< collisions at the project location (4 points); 2< collisions within close proximity of the project location (3 points); 2> collision within close proximity of the project location (2 points); 0 collisions within close proximity of the project location (1 point)</p> <p>CalEnviroScreen 3.0 Traffic Density percentiles: 100-80 (5 points); 80-70 (4 points); 50-40 (3 points); 40-30 (2 points); 20 - 0 (1 point)</p> <p>Speeds: >40 mph (5 points) >30 mph (3 points) >20 mph (2 points)</p> <p>Roadway Classification: Project is located on or crosses a major arterial (5 points); Project is located on or crosses a minor arterial (4 points); Project is located on or crosses a collector arterial (3 points); Project has no arterial crossings (2 points)</p>	<p>UC Berkeley Traffic Injury Mapping System collisions data from 2010 - 2016 https://tims.berkeley.edu/</p> <p>CalEnviroScreen 3.0 - Traffic Density https://oehha.ca.gov/calenviroscreen/indicator/traffic-density</p> <p>Speeds/Roadway Classification <u>Speed data:</u> Association of Monterey Bay Area Governments Regional Roadway Network data.</p> <p><u>Roadway classification:</u> Caltrans California Road System Maps (http://www.dot.ca.gov/hq/tsip/hseb/crs_maps/)</p> <p>The breakdown of points for the speed and roadway classifications is based on research regarding speed and injury severity for pedestrians.</p>	<p>Crash data is a historical and responsive variable, while the remaining safety data points are predictive variables for identifying locations that will improve bike and pedestrian safety.</p> <div data-bbox="1564 516 1969 933" style="border: 1px solid black; padding: 10px; text-align: center;"> <p>HIT BY A VEHICLE TRAVELING AT 20 MPH</p>  <p>9 out of 10 pedestrians survive</p> <p>HIT BY A VEHICLE TRAVELING AT 30 MPH</p>  <p>5 out of 10 pedestrians survive</p> <p>HIT BY A VEHICLE TRAVELING AT 40 MPH</p>  <p>Only 1 out of 10 pedestrians survives</p> </div> <p>Figure 1: Image source - Seattle Department of Transportation. (September 2010).</p>

<p>Connectivity (20 points) Fills a gap or creates access in an existing route to major destinations. Will remove a barrier or close a system gap in the active transportation network.</p>	<p>Major Destinations: Serves 2 or more major regional destinations, project located on a regional wayfinding route (10 points); Serves 1 major regional destinations, project connects to a regional wayfinding route (7 points); Serves 2 or more local destinations (5 points); Serves 1 local destination (3 points); Serves residential neighborhood only (1 point)</p> <p>Closes a Gap: Connects to 1 regional or 2 local or more bike/pedestrian facilities that are existing or planned, project located on a regional wayfinding route (10 points); Connects to 1 local existing or planned bike/pedestrian facility, project connects to a regional wayfinding route (7 points); Project connects to 2 or more local destinations (5 points); Does not connect to an existing or planned bike/ped facility (1 point)</p>	<p>Major Destinations: Regional destinations are large employment centers, colleges and universities, hospitals, shopping centers, downtown commercial centers and transit stations.</p> <p>Local destinations are elementary, middle and high schools, libraries and other community centers.</p> <p>Closes a Gap: Based on 2011 Master Plan database and TAMC existing bikeways data and Regional Wayfinding Plan data.</p>	
--	--	---	--

**Monterey County Active Transportation Plan
Ranking Methodology**

<p>Comfort (20 points) Creates a more comfortable walking or bicycling experience for the user by using innovative bicycle and/or pedestrian treatments such as cycle tracks, bike boxes or pedestrian countdowns.</p>	<p>Treatment: Innovative and physically separated treatment (20 points); Physically separated treatment (15 points); Innovative visually separated treatment (10 points); Mixed with traffic treatment (5 points)</p>	<p>Innovative and physically separated treatment: bike boxes, cycle tracks with physical buffer</p> <p>Physically separated treatment: Sidewalk, curb extensions, shared use path,</p> <p>Innovative visually separated treatment: Pained buffered bike lane, advisory shoulder, crosswalk, high-visibility crosswalk, pedestrian countdowns, bike boulevard</p> <p>Mixed with traffic treatment: Bike routes, bike boulevards, yield roadway</p>	<p>Source: FHWA Small Town and Rural Design Guide-Facilities for Biking and Walking</p>
<p>Active Transportation Trips (15 points) Expected to generate an increase in bicycling and/or walking trips by providing a connection between or access to major destinations, such as: employment centers, shopping centers, community centers, schools and transit stations</p>	<p>Connects to 2 or more regional destinations (15 points); Connects to 1 regional destination and 1 school (13 points); Connects to 2 or more local destinations and 1 school (10 points); Connects to 1 local destination (5 points); Connects to a route, but no destination (3 points); Does not connect to a destination (1 point)</p>	<p>Destinations: Regional destinations are large employment centers, colleges and universities, hospitals, shopping centers, downtown commercial centers and transit stations.</p> <p>Local destinations are elementary, middle and high schools, libraries, local civic centers and other community centers.</p>	

**Monterey County Active Transportation Plan
Ranking Methodology**

<p>Equity (10 points) Serves disadvantaged communities including households living in poverty, children and the elderly, and people of color. The State’s CalEnviroScreen 2.0 Population Characteristics Indicators tool will be used to measure equity.:</p>	<p>CalEnviroScreen 3.0 percentiles: 100-80 (5 points); 80-70 (4 points); 50-40 (3 points); 40-30 (2 points); 20 - 0 (1 point)</p> <p>Public Health Disadvantage Index percentiles: 100-76 (5 points) 75-51 (4 points) 50-26 (3 points) 25 – 0 (2 points)</p>	<p>CalEnviroScreen 3.0 - Population Characteristics https://oehha.ca.gov/calenviroscreen/population-indicators</p> <p>Public Health Alliance of Southern California - California Health Disadvantage Index http://phasocal.org/ca-hdi/</p>	<p>The Public Health Disadvantage Index includes more social equity factors, such as access to a vehicle, that are not included in the CalEnviroScreen scores.</p>
<p>Complete Streets Opportunity Projects (10 points) Integrates active transportation facilities into pre-existing or planned roadway or maintenance projects</p>	<p>Project located on a CIP street (10 points); Project connects to a CIP street (5 points); Project not on or not connected to a CIP street (1 point)</p>	<p>TAMC Measure X Safety & Investment Plan 5-year Capital Improvement Projects http://www.tamcmonterey.org/measure-x/programs-projects/</p>	
<p>Quality Facilities (5 points) Improves the quality of an existing facility with high existing usage in a way that will increase usage.</p>	<p>Yes (2 points) No (1 point)</p>		<p>This is a yes or no question. If there is an existing facility, and a new treatment at the facility is included in the Plan then the answer is YES.</p>



Memorandum

To: Technical Advisory Committee
From: Hank Myers, Senior Transportation Planning Engineer
Meeting Date: March 1, 2018
Subject: Caltrans Updates - PEER Process and SHOPP Projects

RECOMMENDED ACTION:

Caltrans Updates

1. **RECEIVE** update on the memorandum on the streamlined Permit Engineering Evaluation Report (PEER) process;
2. **RECEIVE** update on the State Highway Operation and Protection Program (SHOPP) project list.

ATTACHMENTS:

- ▣ D5 Memo - Streamlined PEER Process
- ▣ Jan 2018 TAMC SHOPP List

Memorandum

*Serious drought.
Help Save Water!*

To: DEPUTY DISTRICT DIRECTORS
DIVISION CHIEFS
OFFICE CHIEFS

Date: July 6, 2017

File: District 5 Streamlined
PEER Procedures

From: RICHARD ROSALES
Deputy District Director Program/Project Management
District 5

Subject: PROCEDURE FOR DISTRICT 5 PROJECTS USING "PROCESSING PROJECTS FUNDED BY OTHERS"
(Streamlined PEER)

This memo is a follow-up to the July 3, 2007, Headquarters policy memo entitled "Processing Projects Funded by Others". The policy provides guidance for projects with between \$1 million and \$3 million of encroachment within the state highway rights of way and that are not major State-funded projects. Although the Headquarters memorandum provides general statewide policy, the Districts may create individual procedures for processing these projects. The District 5 Office of Program Project Management has developed the attached District 5 Permit Engineering Evaluation Report Procedures for initiating a \$1 million to \$3 million Project Funded by Others (Streamlined PEER).

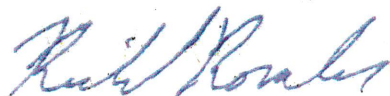
Effective immediately, all projects funded by local agencies or private entities between \$1 million and \$3 million will comply with these procedures. It is the responsibility of Project Management in consultation with Caltrans Transportation Advance Planning Senior Engineer, Project Development (Design Manager) and the District Permit Engineer to determine the appropriate Project Approval process for the project and present to the District Director for concurrence to proceed. In some cases, it may be determined that a project should follow the traditional PSR-PDS and PR process. Projects that qualify for the Streamlined PEER process will be assigned a Project Manager.

Approval of the Streamlined PEER project is the responsibility of the District Director and may be delegated. For a District 5 Streamlined PEER, signature approval is delegated to the District 5 Deputy District Director Program Project Management (Single Focal Point (SFP)).

If you have any questions or require additional information, please contact the District 5 SFP.

APPROVAL RECOMMENDED BY:

APPROVED BY:



Richard Rosales
Deputy District Director Program Project
Management (SFP)



Timothy M. Gubbins
District Director

District 5 PEER Procedures

Projects Funded by Others

\$1 million to \$3 million
(Streamlined PEER)

GENERAL

The purpose of this District 5 policy is to supplement the policy memorandum "Processing Projects Funded by Others" dated July 3, 2007, that provides direction and guidance for processing projects funded by others (local agencies or private entities) between \$1 million and \$3 million. While the policy memorandum provides general policy and guidance, details of the implementation of the process and approvals are left to the individual districts. This document provides additional procedures specific to District 5 projects.

For the purposes of this document, a Permit Engineering Evaluation Report may be used as the project approval document for projects funded by others between \$1 million and \$3 million (Streamlined PEER).

A Permit Engineering Evaluation Report (PEER) may be required for projects less than \$1 million, which will be resourced through Traffic Operations as per the Decision Document attached to the memorandum "Processing Projects Funded by Others" dated July 3, 2007.

PROJECT INITIATION

A local agency or private entity will initiate a consultation meeting for a proposed project on the state highway system by making contact with the Caltrans Transportation Advance Planning Senior Engineer. This contact must be written communication via letter of intent, email, etc. The Caltrans Transportation Advance Planning Senior Engineer will coordinate the consultation meeting with Capital Outlay (initially: Project Management), Encroachment Permits, and Local Assistance to discuss the proposed project and how to proceed. Once contact is made, the District 5 Single Focal Point (SFP) will be notified and will provide a Project Management contact. This person will most likely be an Oversight Project Manager, but another Capital Outlay Support person may be assigned at the discretion of the District 5 SFP.

The assigned Project Manager will coordinate with the local agency or private entity to determine scope, cost, funding and complexity of the proposed project. It is the responsibility of Project Management in consultation with Caltrans Transportation Advance Planning Senior Engineer, Project Development (Design Manager) and the District Permit Engineer to determine if the Streamlined PEER process is appropriate for the proposed project, or if the PSR-PDS and PR process should be followed and present to the District Director for concurrence to proceed. This determination will be made utilizing the current policy and guidance for Projects Funded by Others between \$1 million and \$3 million (Streamlined PEER).

If the Streamlined PEER process is selected for the project, the assigned Project Manager will follow the current adopted procedures for opening a new Project Identifier (see attached "PROCESSING PROJECTS FUNDED BY OTHERS – D05 QUICK REFERENCE" for more information).

PROJECT REVIEW AND FUNCTIONAL APPROVALS

Chapter 9 of the Project Development Procedures Manual (PDPM) states, "*The Caltrans point of contact will ensure that the appropriate district units, such as Design, Environmental, Right of Way, Utilities, Maintenance, etc., review the project as needed.*" For Streamlined PEER projects in District 5, the assigned Project Manager will be the point of contact and will determine which functional units will be involved in the project review process and the number of plan submittal iterations required.

All Streamlined PEER projects must demonstrate compliance with CEQA and, if applicable, NEPA laws governing environmental approval. As per PDPM Chapter 9, "*The Project Sponsor is responsible for preparation of the PEER and providing all supporting documentation.*" as the Project Sponsor the local agency or private entity will be responsible for preparing the Encroachment Permit application, Streamlined PEER and providing all supporting documents for the Streamlined PEER as determined needed by the project team.

The Project Manager will consult with District Environmental units to review and concur with submitted environmental documentation covering the proposed project. Under this process, District 5 delegates CEQA lead agency for all Streamlined PEER projects to the responsible local agency unless otherwise documented in writing. NEPA approval has been delegated to Caltrans by FHWA.

If the proposed project includes new or modified right of way, access control¹ or utilities, District Right of Way must be included in the Streamlined PEER review process. Right of way certification may be required as determined by District Right of Way. In some cases, a cooperative agreement determining roles and responsibilities may be required. If there is no modification of right of way or utilities, District Right of Way involvement is not required.

APPROVAL

As per PDPM Chapter 9, "*The District Director is responsible for approval of the PEER.*" For all Streamlined PEER projects in District 5, the District Director has delegated approval authority of the Streamlined PEER to the District 5 SFP.

The signature of the Oversight Engineer (Design Manager) on the plans will be verification that

¹ Refer to Chapter 27 of the PDPM for Access Control Modifications for when CTC action is required.

the project is ready for issuance of the encroachment permit. There is no requirement for an additional memo certifying completion of project review, as is the procedure for Highway Improvement Projects over \$3 million. The Project Manager will then submit the approved Streamlined PEER, plans and completed encroachment permit application to District 5 Encroachment Permits for issuance of the permit. For local agency projects, the permit issued will be a double permit with no fees charged to the local agency or their contractors.

PROCESS REVISIONS

As the process for Projects Funded by Others continues to evolve, this District 5 policy and procedure may be revised. The District 5 SFP has the authority to approve revisions to this document as necessary. The Project Manager is responsible for providing the local agency or private entity with the most current District 5 policy and procedure.

REFERENCES

"Processing Projects Funded by Others", Headquarters policy memo July 3, 2007 (and accompanying Decision Document)

Project Development Procedures Manual, Chapters 2, 8 and 9 and Appendix I, most current edition

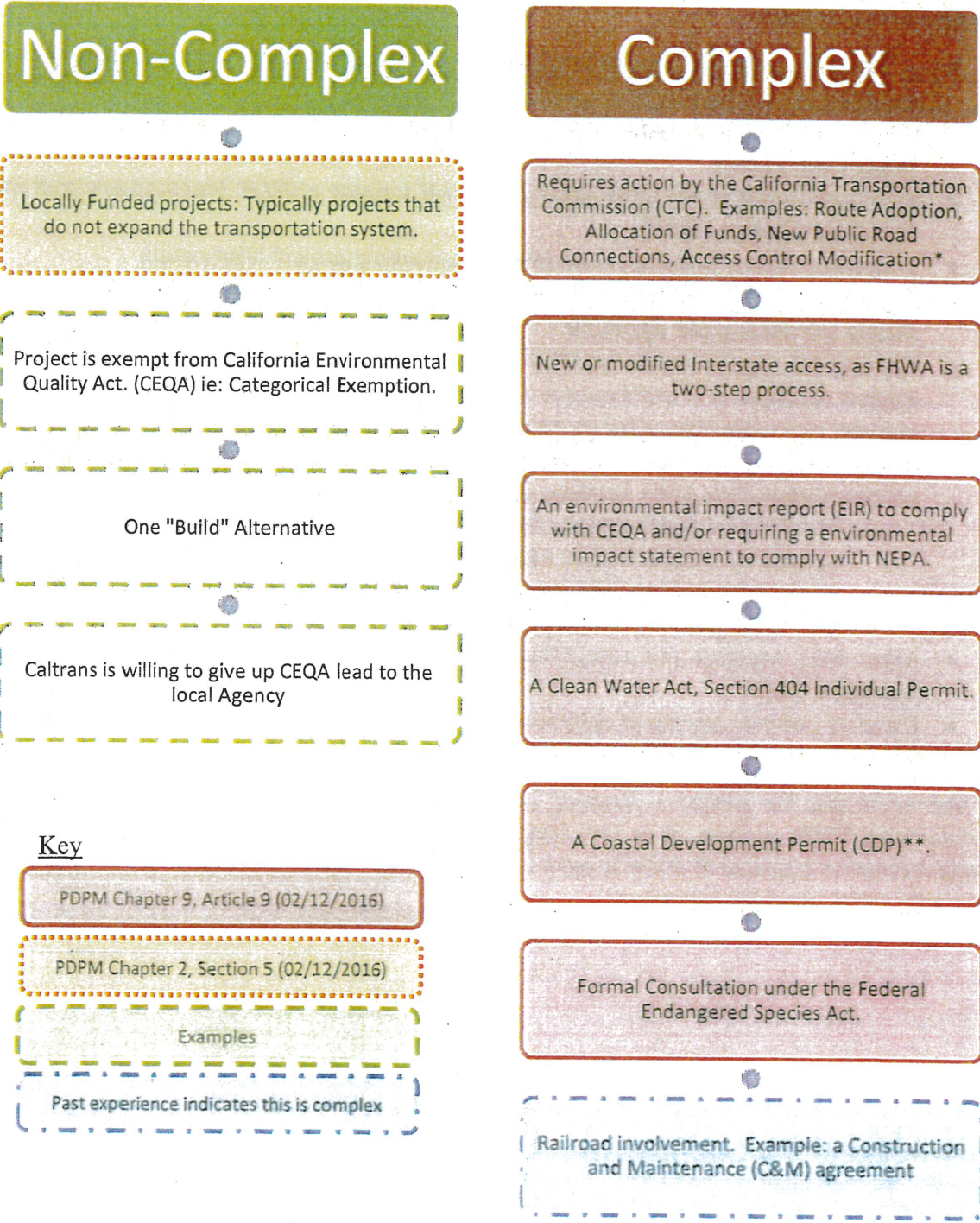
Manual for Encroachment Permits on California State Highways, most current edition

Business Process Documentation for PEER Projects with Construction Capital between \$1million and \$3 million, September 2007

District 3 "New Procedure for Processing District 3 Projects Using the PEER Process, April 09, 2008

Eligibility

“...If the project does not meet the eligibility requirements for processing a combined project study report-project report (PSR-PR), it is not eligible for processing a PEER.” PDPM, Chapter 9, Article 8.



*Refer to Chapter 27 of the PDPM for Access Control Modifications for when CTC action is required.

**Condition may be waived by the District Director if the local jurisdiction developing the project is also the CDP permitting authority.

If it is determined that the project qualifies to follow the Projects Funded by Others \$1 million to \$3 million (Streamlined PEER) then proceed with these instructions for obtaining a Capital Outlay Support (COS) Project ID (EA) for a Streamlined PEER Project with Construction Capital between \$1 Million and \$3 Million for work within the state right of way.

Project Manager (PM):

- A letter documenting the determination, assumptions, constraints and risks that the project currently meets the eligibility requirements for processing a Streamlined PEER (ie: meets eligibility for a combined project study report-project report (PSR-PR)) shall be sent to the Local Agency.
- Provides support to the Local Agency, who will prepare a DRAFT Standard Encroachment Permit Application (SEPA)
- Prepares a Project Initiation Form (PIF) documenting project information.
- Completes the "CALTRANS DISTRICT 05 - SINGLE FOCAL POINT (SFP) CONCURRENCE" memo and obtains SFP signature.
- Submits PIF, signed memo and Draft SEPA to District Project Control to get a PREPID Project Identifier (PI) and Expense Authorization (EA) assigned to allow the project to transfer from AMS Advantage to Project Resourcing and Schedule Management (PRSM).
Note: Phases cannot be opened for work yet. A workplan, Headquarters approval, categorization flags and a baseline must be established in PRSM first.
 - a. The PRSM Implementation manager will request the project be added to various databases (PRSM, Project Management Control System (PMCS)) and authorized to start the \$1M to \$3M Streamlined PEER process. Please provide the PIF, Draft SEPA and approved concurrence memo.
- Upon HQ's approval and categorization the project and appropriate phase(s) may be opened in AMS.
- Develop and manage the project workplan, expenditures, reviews and progress through the planning, design, and construction process.

In the event that the project is stopped, terminated or no longer qualifies for the \$1M-\$3M Streamlined PEER process, it is the Project Manager's responsibility to notify the PRSM Implementation manager that the project is now on-hold. The PRSM Implementation manager will notify HQ Project Management.

References (some of these links are not available to those outside of Caltrans or D5 PPM)

Statutory Authority: Authority for Caltrans to control encroachments within the State highway right-of-way is contained in the [California Streets and Highways Code](#) starting with Section 660.

Caltrans Internet links – Available to everyone

[July 3, 2007 Memo - Processing Projects Funded by Others](#)

[Permit Engineering Evaluation Report \(PEER\) - Booklet](#)

[When is a PID Required?](#)

[Project Development Procedures Manual \(PDPM\)](#)

[Chapter 2 - Roles and Responsibilities - Section 5 – Special Funded Projects and Related Projects](#)

[Chapter 8 – Overview of Project Development](#)

[Chapter 9 – Project Initiation - Article 8 – Project Initiation Process for Projects-Funded-by-Others](#)

[Chapter 27 - Access Control Modification](#)

[Appendix I – Preparation Guidelines for Permit Engineering Evaluation Report](#)

[Encroachment Permits Manual](#)

[Chapter 100 The Permit Function](#)

[Chapter 200 Processing Permits](#)

D5 PPM Library links – Available to D5 PPM staff only

[Business Process Documentation for PEER projects with construction capital between \\$1M and \\$3M](#)

Emails chains are provided for history and can be found in the Library

[COOP vs PEER](#)

[PEER w-coop vs PEER no coop question](#)

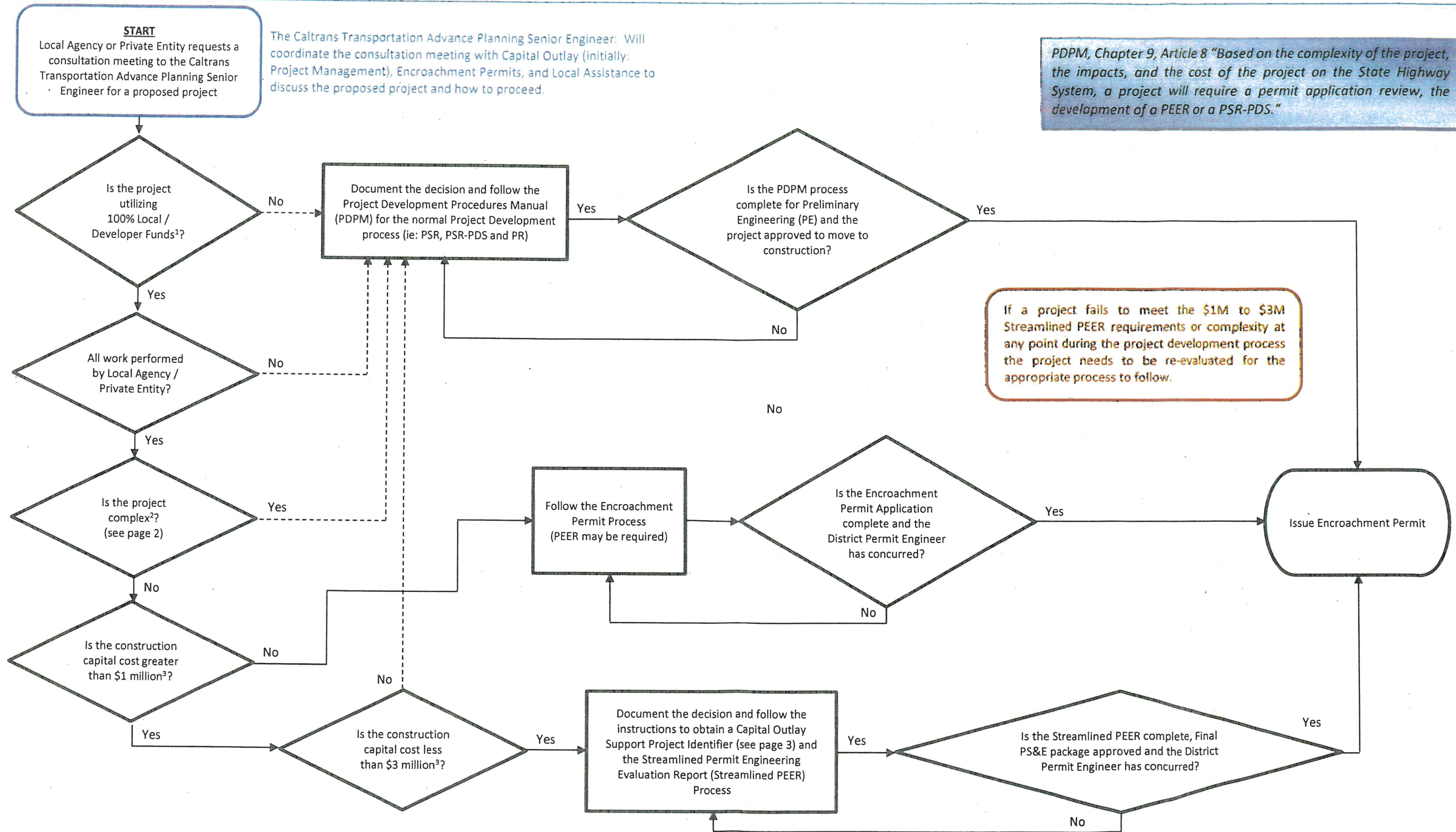
[Project w/ATP funds do not qualify for PEER process](#)

Caltrans Intranet links – Available to Caltrans staff only

Links to other Districts PEER information

[D3 PEER Procedures](#)

[D11 Business Practice Memo](#)



1. 100% Local / Developer funds: Per the PDPM, Chapter 9 "Projects-funded-by-others – projects that are sponsored by a local agency or private developer, and do not use any funds that are programmed into the STIP or SHOPP" (examples: STIP (RIP/IIP), ATP, SHOPP, SHOPP-Minor, TCRP, Federal Trust Fund, Prop 1B Bond, CMIA, etc). If you are unsure if the fund type being utilized would qualify to follow the "July 3, 2007 Memo - Processing Projects Funded by Others" memo - PLEASE CHECK!
2. "Is the project complex?": Per the Encroachment Permits Manual, Chapter 100 "A project is considered complex if it is ineligible for a combined PSR-PR. Other factors that can contribute to the complexity of a project are included in "Considerations for a Combined PSR-PR" (see PDPM Chapter 9, Article 9)."
3. Construction Capital costs are for work that is within the state right of way.

DEPARTMENT OF TRANSPORTATION

50 HIGUERA STREET
SAN LUIS OBISPO, CA 93401-5415
PHONE (805) 549-3101
FAX (805) 549-3329
TTY 711

<http://www.dot.ca.gov/dist05/>



*Flex your power!
Be energy efficient!*

February 2, 2018

Debbie Hale
Executive Director
Transportation Agency for Monterey County
55-B Plaza Circle
Salinas, CA 93901

Dear Ms. Hale:

UPDATE OF THE STATE HIGHWAY OPERATION AND PROTECTION PROGRAM (SHOPP) FOR DISTRICT 5

The California Department of Transportation (Caltrans) District 5 would like to share with your agency the current status of SHOPP programming in Monterey County.

Caltrans is responsible for maintaining and operating about 50,000 lane-miles of the state highway system, the backbone of California's transportation infrastructure. This includes monitoring the condition and operational performance of the highways through periodic inspections, traffic studies and system analysis. The SHOPP is funded through the State Highway Account supporting the State's priority for preserving the existing infrastructure.

Caltrans identifies the highest priority projects for SHOPP funding to meet its performance objectives. For projects in Monterey County that are currently programmed in the SHOPP as of January, 2018 see Attachment 1. For projects currently under development for the 2020 SHOPP see Attachment 2. To view the 2020 SHOPP geographically via a WebViewer please use this [link](#).

We look forward to discussing the SHOPP with you. We also request that you identify any regionally or locally funded projects that we should be aware of to streamline delivery timeframes, maximize benefits and minimize impacts to the traveling public.

Please share this information with your member agencies, and encourage them to contact the appropriate project manager on individual projects. For more information, please contact Garin Schneider at 805-549-3640 or email Garin.Schneider@dot.ca.gov.

Debbie Hale, Executive Director
February 2, 2018
Page 2

Sincerely,

A handwritten signature in blue ink, appearing to read "Aileen K. Loeb". The signature is fluid and cursive, with a long horizontal stroke at the end.

For
AILEEN K. LOE
Deputy District Director
Planning and Local Assistance

Attachments

1. Programmed SHOPP Projects
2. 2020 Candidate SHOPP Project List and Map



PROGRAMMED/FUNDED SHOPP PROJECTS in Monterey County

Jan 2018 Semi-Annual List

Route	Post Miles	EA Project Identifier	PPNO	Project Description	Project Name	Current Project Phase	Ready to List (Target)	Project Manager Phone/Email	Cost (\$1,000) CON/RW
Programmed in 14/15									
VAR	VAR	0J490 0514000120	4900	In Santa Barbara, Monterey, San Benito, Santa Cruz, and San Luis Obispo counties at various locations. Upgrade highway signs and lighting. (Project in SB; some work in MON, SBt, SCr, SLO counties)	Exit Retrofit Signs	CON	5/12/2015(A)	Lisa Lowerison 805-542-4764 lisa.lowerison@dot.ca.gov	\$5,990 Award/\$0
68	R17.4/R18.0	0F700 0500000049	7000	Near Salinas from 0.2 mile east of Reservation Road to Spreckles Blvd. Widen bridge.	Salinas River Bridge Widening	CON	6/24/2015(A)	David Rasmussen 805-549-3677 david.rasmussen@dot.ca.gov	\$19,405 Award/\$467
101	47.7/53.9	1E060 0513000030	2472	In Greenfield, from Teague Avenue to Walnut Avenue. Construct concrete median barrier.	South Greenfield Median Barrier	CON	6/24/2015(A)*	Aaron Henkel 805-549-3084 aaron.henkel@dot.ca.gov	\$5,401 Award/\$6
Programmed in 15/16									
101	63.2 / R69.3	0G040 0500020020	0040B	Near Paso Robles, from 0.4 mile south of San Marcos Creek Bridge to the Monterey County line; also in Monterey County (PM R0.0 to R2.0). Pavement rehabilitation. (Note: Former Long Lead project) (Project in SLO; some work in MON)	North Paso Robles Rehab	CON	5/6/2016(A)	Amy Donatello 805-549-3014 amy.donatello@dot.ca.gov	\$55,567-Award/\$2,000
Programmed in 16/17									
183	R1.8/R8.6	1G390 0515000008	2597	In and near Salinas, from Davis Road to Blackie Road. Install centerline and shoulder rumble strips.	Blackie Road Rumble Strip	CON	11/22/2016 (A)	Aaron Henkel 805-549-3084 aaron.henkel@dot.ca.gov	\$1,119/\$0
198	22.4/22.8	1C660 0512000186	2420	Near San Lucas, from 0.1 mile west of North Fork Road to 0.3 mile east of North Fork Road. Widen and repave roadway to correct cross-slope.	North Fork Widening	CON	2/16/2017 (A)	Aaron Henkel 805-549-3084 aaron.henkel@dot.ca.gov	\$1,508/\$51
101	53.9/57.1	1G380 0515000007	2596	Near Greenfield, from Walnut Avenue to 2.4 miles north of North Greenfield Overcrossing. Install median barrier.	North Greenfield Median Barrier	CON	3/2/2017 (A)	Aaron Henkel 805-549-3084 aaron.henkel@dot.ca.gov	\$4,190/\$5
68	L4.0/R18.1	0N190 0513000142	4019	Near the cities of Monterey and Salinas, from Route 1 to Spreckels Boulevard. Install Traffic Management System (TMS) elements. Supplemental Funds Request to Award will go before the CTC in Jan 18 to award.	MON 68 TMS	CON	3/6/2017 (A)	David Rasmussen 805-549-3677 david.rasmussen@dot.ca.gov	\$1,819/\$200
Programmed in 17/18									
198	R111/25.78	1H820 0516000165	2698	In Monterey County on Route 198 from the Junction with Route 101 to the Fresno County Line. Construct centerline rumble strip and edge line rumble strip.	198 Centerline Rumble Strp	CON	05/17/2017 (A)	Aaron Henkel 805-549-3084 aaron.henkel@dot.ca.gov	\$805/\$0
68	1.6/L4.1	1G450 0515000031	2604	Near Pacific Grove, from Piedmont Avenue to Scenic Drive. Pavement overlay and install centerline rumble strips. (Funds Request to Award will go before the CTC in Jan 18.)	Pacific Grove Centerline Rumble Strip	CON	7/19/2017 (A)	Carla Yu 805-549-3749 carla.yu@dot.ca.gov	\$3,211/\$14

NOTE: For general information about the SHOPP program contact Sherri Martin at (805) 549-3788 or sherri.martin@dot.ca.gov
List is provided in January and July of each year.
* RTL=Actual (target achieved)



PROGRAMMED/FUNDED SHOPP PROJECTS in Monterey County

Jan 2018 Semi-Annual List

Route	Post Miles	EA Project Identifier	PPNO	Project Description	Project Name	Current Project Phase	Ready to List (Target)	Project Manager Phone/Email	Cost (\$1,000) CON/RW
VAR	VAR	1C990 0513000022	2458	In and near Carmel, Monterey, and Seaside on Routes 1 and 68 at various locations. Roadside maintenance safety improvements. (Funds Request to Award will go before the CTC in Jan 18.)	MON County Worker Safety Improvements	CON	9/21/2017 (A)	Carla Yu 805-549-3749 carla.yu@dot.ca.gov	\$3,100/\$18
101	53.2	1E051 0515000079	2470Y	mitigation for PPNO 2470. (Funds Request to Award will go before the CTC in Jan 18.)	Landscape for Safety Facility Upgrades near Greenfield	CON	09/08/2017 (A)	Aaron Henkel 805-549-3084 aaron.henkel@dot.ca.gov	\$122/\$0
Mon, SCr, SBT - Var	Various	1G910 0515000136	N/A	In Monterey, Santa Cruz and San Benito Counties, on various routes at various locations. Signs. (Project in MON; some work in SCR & SBT) Project achieved RTL and funds will be voted at next CTC meeting.	North District One Way Signs	PS&E/RW	1/10/2018 (A)	Aaron Henkel 805-549-3084 aaron.henkel@dot.ca.gov	\$1,200/\$0
1	2.5/67.3	1F080 0513000052	2478	South of Carmel, at seven (7) locations from north of the San Luis Obispo County line to south of Malpaso Creek Bridge. Rehabilitate and/or replace culverts.	Replace 7 culverts on MON 1	PS&E/RW	4/9/2018	Ken Dostalek 805-549-3133 ken.dostalek@dot.ca.gov	\$3,279/\$300
101	87.3/R91.5	1C890 0513000009	2474	In Salinas, from East Market Street to south of Russell/Espinosa Road. Rehabilitate pavement.	Salinas Rehab	PS&E/RW	4/27/2018	Aaron Henkel 805-549-3084 aaron.henkel@dot.ca.gov	\$43,740/\$95
1	58.3/59.8	1A000 0500020284	2313	North of Big Sur, from south of Bixby Creek Bridge to south of Rocky Creek Bridge. Widen shoulders and upgrade guardrails.	Hurricane Point to Rocky Creek Viaduct - Collision Severity Reduction	PS&E/RW	4/23/2018	Ken Dostalek 805-549-3133 ken.dostalek@dot.ca.gov	\$5,349/\$30
101	R41.4/R41.8	1C960 0513000019	2454	In and near King City, at the Salinas River Bridge No. 44-32. Bridge seismic retrofit and bridge rail replacement.	Salinas River Bridge Seismic Retrofit	PS&E/RW	5/31/2018	Aaron Henkel 805-549-3084 aaron.henkel@dot.ca.gov	\$29,850/\$1,007
101	R36.9/43.2	1F750 0514000050	2548	In and near King City, from south of Wild Horse Road to north of Jolon Road. Rehabilitate pavement.	King City Rehab	PS&E/RW	5/25/2018	Aaron Henkel 805-549-3084 aaron.henkel@dot.ca.gov	\$56,260/\$15
68	1.6/L4.0	1C250 0512000107	2378	Near Pacific Grove, from south of Piedmont Avenue to Scenic Drive. Widen shoulders.	Pacific Grove Shoulder Widening	PS&E/RW	6/14/2018	Carla Yu 805-549-3749 carla.yu@dot.ca.gov	\$3,600/\$359
101	R41.6/R41.7	1H620 0516000104	2673	Near King City, from 0.3 mile south of Jolon Undercrossing to Teague Avenue. Install median barrier, widen inside shoulders and include rumble strip.	North King City Median Barrier	PS&E/RW	6/27/2018	Aaron Henkel 805-549-3084 aaron.henkel@dot.ca.gov	\$6,510/\$5

Programmed in 17/18 (continued)

1	8.0/23.0	1H780 0516000151	2688	In Monterey County, on Route 1, from 2.2 miles south of Gorda to Luca. Emergency Contract project. EFA #05A1959	Remove Slide.	CON	N/A	Lance Gorman 805-549-3315 lance.gorman@dot.ca.gov	\$2,500/\$20
1	45.52	1J130 0517000064	2713	In Monterey County, at Pfeiffer Canyon Bridge, No# 44-60. Emergency Contract project. EFA #05A1982	Restore Access, replace bridge	CON	N/A	Lance Gorman 805-549-3315 lance.gorman@dot.ca.gov	\$3,000/\$20

NOTE: For general information about the SHOPP program contact Sherri Martin at (805) 549-3788 or sherri.martin@dot.ca.gov
List is provided in January and July of each year.

* RTL=Actual (target achieved)



PROGRAMMED/FUNDED SHOPP PROJECTS in Monterey County

Jan 2018 Semi-Annual List

Route	Post Miles	EA Project Identifier	PPNO	Project Description	Project Name	Current Project Phase	Ready to List (Target)	Project Manager Phone/Email	Cost (\$1,000) CON/RW
1	47.0/58.0	1J320 0517000065	2717	In Monterey County, on Route 1 at and near Big Sur from 0.4 mile north of Big Sur Bridge to 1.5 miles south of Coast Road. Emergency Contract project. EFA #05A1983	Remove Slide.	CON	N/A	Lance Gorman 805-549-3315 lance.gorman@dot.ca.gov	\$2,000/\$20
1	23.0/45.4	1J340 0517000078	2719	In Monterey County, on Route 1 near Big Sur from Lucia to Pfeifer Canyon. Emergency Contract project. EFA #05A1998	Slide Removal, Drainage Repair, Paving	CON	N/A	Lance Gorman 805-549-3315 lance.gorman@dot.ca.gov	\$5,500/\$50
101	85.6/R91.3	1J610 0518000004	2667	In Monterey County, in Salinas from Airport Road to Little Bear Creek Bridge. Replace chain link fence, remove vegetation, clean up trash from vagrants.	Salinas Fence Replacement	CON	N/A	Zeke Dellamas 805-549-3315 zeke.dellamas@dot.ca.gov	\$200/\$0

Programmed in 18/19

101	73.8/87.3	1F700 0514000055	2540	In and near Salinas, from north of North Gonzales Overcrossing to East Market Street. Pavement rehabilitation	Salinas CAPM	PS&E/RW	10/29/2018	David Silberberger 805-549-3798 david.silberberger@dot.ca.gov	\$19,400/\$70
101, 46	VAR	1J040 0517000054	2705	In Monterey County on route 101 at Camp Roberts Safety Roadside Rest Areas and in San Luis Obispo County on Route 46 at Shandon Safety Roadside Rest Area. Install a Zero Emissions Vehicle (ZEV) charging station. (Project in SLO and MON counties.)	ZEV Project	PS&E/RW	11/1/2018	Aaron Henkle 805-549-3084 aaron.henkle@dot.ca.gov	\$1,210/\$5
101	R28.0/R30.6	1F740 0514000049	2546	Near King City, from south of Paris Valley Road Overcrossing to Rancho Undercrossing. Roadway rehabilitation.	Paris Valley 2R Rehab	PS&E/RW	12/7/2018	Aaron Henkel 805-549-3084 aaron.henkel@dot.ca.gov	\$26,950/\$0
1	R0.0/R8.1	1C980 0513000021	2452	In Santa Cruz and Monterey Counties, from south of Salinas Road to south of Larkin Valley Road Undercrossing. Construct maintenance vehicle pull outs, repairing guardrail, improve gate access and relocate irrigation equipment. (Project in MON; some work in SCR.)	MON SCR Roadside Safety	PS&E/RW	2/27/2019	Carla Yu 805-549-3794 carla.yu@dot.ca.gov	\$2,900/\$5
101	86.0/95.8	0N200 0516000016	4020	In Monterey County, in and near the City of Salinas 0.4 miles north of the Airport Boulevard OC to 0.3 miles south of the San Miguel Canyon OC. Construct Transportation Management Systems (TMC). *This project was amended into the 2016 SHOPP due to SB1 funding.	Monterey 101 TMS	PA&ED	4/15/2019	David Silberberger 805-549-3798 david.silberberger@dot.ca.gov	\$1,500/\$9

Programmed in 18/19 (Continued)

VAR	VAR	1G310 0514000140	2595	In Monterey, Santa Cruz and San Benito counties, on various routes at various locations. Replace and install advance curve warning signs. (Project in MON; also in SCR & SBt Counties)	Warning Sign Upgrades	PA&ED	5/1/2019	Joe Erwin 805-549-3792 joe.erwin@dot.ca.gov	\$1,852/\$48
-----	-----	---------------------	------	---	-----------------------	-------	----------	--	--------------

NOTE: For general information about the SHOPP program contact Sherri Martin at (805) 549-3788 or sherri.martin@dot.ca.gov
List is provided in January and July of each year.
* RTL=Actual (target achieved)



PROGRAMMED/FUNDED SHOPP PROJECTS in Monterey County

Jan 2018 Semi-Annual List

Route	Post Miles	EA Project Identifier	PPNO	Project Description	Project Name	Current Project Phase	Ready to List (Target)	Project Manager Phone/Email	Cost (\$1,000) CON/RW
1	39.8/74.6	1F680 0514000046	2534	In and near Big Sur and Carmel, from Torre Canyon Bridge to San Luis Avenue. Pavement rehabilitation	Big Sur CAPM	PA&ED	6/7/2019	Carla Yu 805-549-3794 carla.yu@dot.ca.gov	\$24,335/\$31

Programmed in 19/20

101	62.1/63.2	0F970 0513000017	9700	Near Soledad, from Route 146 to Front Street at the North Soledad Overhead No. 44-91R. Rehabilitate bridge.	North Soledad Overhead Deck Replacement	PS&E/RW	11/1/2019	Ken Dostalek 805-549-3133 ken.dostalek@dot.ca.gov	\$7,358/\$1,578
VAR	VAR	1H040 0516000015	2634	In Monterey County and Santa Cruz Counties, on Various Routes and locations. Replace overhead signs. (Project in MON; some work in SCR.) *2018 SHOPP Candidate will be approved at the 03/2018 CTC meeting.	Box Beam Overhead Signs	*PA&ED	11/22/2019	Aaron Henkel 805-549-3084 aaron.henkel@dot.ca.gov	\$1,680/\$0
156	R1.1/R2.1	0A090 0513000028	0900A	Near Castroville, from Route 183 to Castroville Boulevard. Upgrade bridge railing and widen overhead.	Castroville Overhead	PS&E/RW	11/22/2019	David Silberberger 805-549-3798 david.silberberger@dot.ca.gov	\$5,050/\$467
101	73.0/96.8	1F900 0514000073	2571	In Monterey and San Benito counties from north of North Gonzalez Overcrossing to the Santa Clara County line. Roadside safety improvements. (Project in MON; some work in SBT.)	Monterey-San Benito Co Roadside Safety Improvements	PA&ED	12/24/2019	Brandy Rider 805-549-3620 brandy.rider@dot.ca.gov	\$4,368/\$456
1	20.4	0Q500 0500020288	2230	Near Lucia at 0.6 mile south of Limekiln Creek Bridge. Replace culvert.	Replace Culvert Near Limekiln Creek	PA&ED	2/3/2020	Ken Dostalek 805-549-3133 ken.dostalek@dot.ca.gov	\$1,527/\$23
101	R41.5/49/8	0T991 0516000125	2312Y	In an near King City, from 0.1 mile south of Broadway Street to 0.1 mile north of Broadway Street and from Jolon Road to 0.2 mile north of Jolon Road. Landscape mitigation.	King City Trees Planting Mitigation	PS&E/RW	4/24/2020	David Rasmussen 805-549-3677 david.rasmussen@dot.ca.gov	\$816/\$0
101	R6.7	1F820 0514000064	2565	Near Paso Robles, at San Antonio River Bridge No 44-0141L/R. Bridge seismic restoration.	San Antonio River Bridge Seismic Retrofit	PA&ED	4/29/2020	Carla Yu 805-549-3794 carla.yu@dot.ca.gov	\$7,734/\$841
VAR	VAR	1H990 0517000047	2735	In various counties on various routes throughout District 5. Replace failed Traffic Management System (TMS) detection. (Project in MON, SBT, SCR, SLO and SB counties)*SB1.	TMS Detection Repair.	PA&ED	4/1/2020	Brandy Rider 805-549-3620 brandy.rider@dot.ca.gov	\$3,200/\$21
101	R2.9/R5.3	1H020 0516000013	2633	In Monterey County near Bradley, at Camp Roberts Safety Roadside Rest Area (SRRA). Upgrade northbound and southbound SRRA facilities. *2018 SHOPP Candidate will be approved at the 03/2018 CTC meeting.	Camp Roberts SRRA Infrastructure Upgrade	*PA&ED	4/1/2020	Carla Yu 805-549-3794 carla.yu@dot.ca.gov	\$4,873/\$6

Programmed in 20/21

68	1.1/L4.3	1H000 0516000011	2631	In and near Pacific Grove from Forest Avenue to Junction of Route 1/68 Separation (South) . Pavement Preservation. *SB1.	Pacific Grove CAPM	PA&ED	12/11/2020	Carla Yu 805-549-3794 carla.yu@dot.ca.gov	\$7,996/\$70
----	----------	---------------------	------	---	--------------------	-------	------------	--	--------------

NOTE: For general information about the SHOPP program contact Sherri Martin at (805) 549-3788 or sherri.martin@dot.ca.gov
List is provided in January and July of each year.
* RTL=Actual (target achieved)



PROGRAMMED/FUNDED SHOPP PROJECTS in Monterey County

Jan 2018 Semi-Annual List

Route	Post Miles	EA Project Identifier	PPNO	Project Description	Project Name	Current Project Phase	Ready to List (Target)	Project Manager Phone/Email	Cost (\$1,000) CON/RW
1	0.1	1H460 0516000077	2654	In Monterey County about 11.3 miles south of Carmel-By-The-Sea at Garapata Creek Bridge (#44-0018). Electrochemical Chloride Extraction (ECE) of Bridge Structure. *SB1.	Garrapata Creek Bridge Rehab	PA&ED	1/8/2021	Carla Yu 805-549-3794 carla.yu@dot.ca.gov	\$7,400/\$0
VAR	VAR	1G960 0516000006	2628	In Santa Barbara County, San Luis Obispo, Monterey and Santa Cruz Counties on Routes 1, 101, 129, 135, 156 and 246 at various locations. Install Accessible Pedestrian Signal (APS) push buttons, Countdown Pedestrian Signal (CPS) heads, pedestrian barricades, and corsswalk signage to improve pedestrian and bicycle safety. (Project in MON, SCR, SLO and SB counties). *This is a2018 SHOPP Candidate which will be approved at the 03/2018 CTC meeting.	Pedestrian Signals 32	*PA&ED	2/1/2021	Mike Lew 805-549-3227 mike.lew@dot.ca.gov	\$2,232/\$16
17	VAR	1G260 0514000131	2593	Near Scotts Valley, from 0.06 miles south of Laurel Road to 0.25 miles north of Laurel Road. Construct wildlife undercrossing. (Project in MON, SCR & SBt Counties) SHOPP Financial Contributions \$3,155 for PA&ED, PS&E and R/W only. Local contributions to fund remaining components.	Wildlife Habitat Crossing	PA&ED	2/4/2021	Aaron Henkel 805-549-3084 aaron.henkel@dot.ca.gov	\$0/\$138
1	43.1/43.1	1H490 0516000081	2656	In Monterey County near Big Sur, at Castro Canon Bridge no. 44-0035. Upgrade bridge railing and approach railings to meet current standards. *2018 SHOPP Candidate will be approved at the 03/2018 CTC meeting.	Castro Canyon Bridge Rail Upgrade	*PA&ED	4/1/2021	Ken Dostalek 805-549-3133 ken.dostalek@dot.ca.gov	\$1,605/\$41

Programmed in 21/22

68	0.5/0.8	1H220 0516000041	2647	In Monterey County in Pacific Grove, from 17 Mile drive to Congress Avenue. Construct ADA compliant pathway along eastbound Route 68, upgrade curb ramps and sidewalk to meet ADA standards. Replace streelight pole and signs, remove and replant trees. *2018 SHOPP Candidate will be approved at the 03/2018 CTC meeting.	Pacific Grove ADA Pathway	*PA&ED	8/2/2021	Mike Lew 805-549-3227 mike.lew@dot.ca.gov	\$7,996/\$70
101	R91.5/101.3	1H690 0516000140	2679	In Monterey County in and near Prunedale 0.5 miles north of Boronda Road OC to Monterey/San Benito County Line . Pavement Rehabilitation. *SB1.	Prunedale Rehab	PA&ED	8/3/2021	David Silberberger 805-549-3798 david.silberberger@dot.ca.gov	\$104,/\$393

Programmed in 21/22 (continued)

NOTE: For general information about the SHOPP program contact Sherri Martin at (805) 549-3788 or sherri.martin@dot.ca.gov
List is provided in January and July of each year.
* RTL=Actual (target achieved)



PROGRAMMED/FUNDED SHOPP PROJECTS in Monterey County

Jan 2018 Semi-Annual List

Route	Post Miles	EA Project Identifier	PPNO	Project Description	Project Name	Current Project Phase	Ready to List (Target)	Project Manager Phone/Email	Cost (\$1,000) CON/RW
101	87.4/87.8	1H050 0516000018	2635	In Monterey County in and near Salinas, from 0.1 mile north of East Market Street to 0.1 mile south of Sherwood Drive. Lengthen the onramp to improve merging conflicts. *2018 SHOPP Candidate will be approved at the 03/2018 CTC meeting.	Market Street Northbound On-Ramp Improvements	*PA&ED	8/6/2021	David Silberberger 805-549-3798 david.silberberger@dot.ca.gov	\$4,750/\$5
218	R0.2/L0.9	1H230 0516000042	2648	In Monterey County in Seaside, from El Monte Road to Fremont Boulevard. Construct new sidewalks/upgrade pedestrian pathway and construct/upgrade curb ramps to meet current standards. *2018 SHOPP Candidate will be approved at the 03/2018 CTC meeting.	Seaside ADA	*PA&ED	10/1/2021	Mike Lew 805-549-3227 mike.lew@dot.ca.gov	\$1,122/\$356
183	R8.3/9.8	1H650 0516000118	2678	In Monterey County in Castroville from Del monte Avenue to Washington Street, a multi-objective Asset management Pilot Project. Predominate mobility project. *2018 SHOPP Candidate will be approved at the 03/2018 CTC meeting.	Castroville Improvement Project	*PA&ED	4/15/2022	David Silberberger 805-549-3798 david.silberberger@dot.ca.gov	\$13,300/\$2,300

Long Lead Project

1	20.9/21.3	1F510 0514000004	2524	In Monterey County, near Lucia from 0.1 mile south to 0.2 mile north of Limekiln Creek Bridge No. 44-0058. Replace bridge. *2018 SHOPP Candidate will be approved for PA&ED at the 03/2018 CTC meeting.	Limekiln Creek Bridge Replacement	PA&ED	4/3/2025	Ken Dostalek 805-549-3133 ken.dostalek@dot.ca.gov	\$64,644/\$704
1	63.0/63.0	1H800 0516000163	2696	In Monterey County, near Carmel-By-The-Sea, at Garrapata Creek Bridge No 44-0018. replace bridge railing to meet current traffic safety standars. *2018 SHOPP Candidate will be approved for PA&ED at the 03/2018 CTC meeting.	Garrapat Creek Bridge Replacement	PA&ED	2/14/2023	Carla Yu 805-549-3794 carla.yu@dot.ca.gov	\$3,000/\$5
1	18.5/18.7	0P300 0516000047	3030	In Monterey County near Lucia, north of Mill Creek Bridge (No 44-62). Stabilize highway segment caused by erosion. *2018 SHOPP Candidate will be approved for PA&ED at the 03/2018 CTC meeting.	Realignment at Mill Creek Bridge	PA&ED	1/2/2025	Ken Dostalek 805-549-3133 ken.dostalek@dot.ca.gov	\$9,402/\$100

(A) = Actual date RTL was achieved.

Minor A Projects

Note: Construction Award or Vote costs are actuals; otherwise Construction costs are estimates.

NOTE: For general information about the SHOPP program contact Sherri Martin at (805) 549-3788 or sherri.martin@dot.ca.gov
List is provided in January and July of each year.
* RTL=Actual (target achieved)



Monterey County
2018 SHOPP Candidate
Continuous Programming
2016 SHOPP Amended

EA	Category - Project Description	Route	Postmile	Project Location	Project Manager
1H460	Bridge- Electrochemical Chloride Extraction (ECE) of Bridge Structure	1	62.9	In Monterey County near Big Sur at Garrapata Creek Bridge (44- 18)	Carla Yu (805) 549-3749
1H000	Pavement Preservation- Restore pavement condition	68	1.12/L4.3	In Monterey County in and Near Pacific Grove from Forest Avenue to Jct. RTE 1/68 Separation (South)	Carla Yu (805) 549-3749
0N200	Mobility-Construct Transportation Management System elements including Vehicle Detection Stations, Closed Circuit Television Systems, and Census Loops	101	82.0/101.3	In Monterey County between Spence Road near Salinas and the San Benito County Line	David Silberberger (805) 549-3798

Note: For project-specific questions, contact the corresponding project manager.
 For general PID program & planning questions contact Garin Schneider at (805) 503-3640



Monterey County
2018 SHOPP Candidate
Continuous Programming
Scheduled for (October Amendment)

EA	Category - Project Description	Route	Postmile	Project Location	Project Manager
1H690	Roadway-Rehabilitate Pavement (2R)	101	R91.5/101.3	In Monterey County Near Salinas from Russell Road to Monterey/San Benito County Line	David Silberberger (805) 549-3798
1H990	Transportation Management Systems (TMS)- Replace/repair failed detectors and damaged loop reported to PeMS	VAR	VAR	Various Locations in San Luis Obispo County	Brandy Rider (805) 549-3620

Note: For project-specific questions, contact the corresponding project manager.
For general PID program & planning questions contact Garin Schneider at (805) 503-3640

ATTACHMENT 2
February 2017



Monterey County
2018 SHOPP Candidate
Continuous Programming
Scheduled for (December Amendment)

EA	Category - Project Description	Route	Postmile	Project Location	Project Manager
0P300	Roadway Preservation- Construct viaduct	1	18.5/18.7	In Monterey County north of Mill Creek Bridge	Ken Dostalek (805) 549-3133
1H220	ADA Compliance- Provide pedestrian accessible pathway	68	0.50/0.80	In Monterey County in Pacific Grove from 17 Mile Drive to Congress Avenue	Mike Lew (805) 549-3227
1H050	Collision Reduction- Lengthen northbound on-ramp	101	87.4/87.8	In Monterey County in the City of Salinas at the Northbound On-ramp at Market Street	David Silberberger (805) 549-3798
1H650	Asset Management Pilot Project-Castroville Improvement Project	183	R8.3/9.8	In Monterey County in the community of Castroville from Del Monte Avenue to Washington Street	David Silberberger (805) 549-3798
1H230	ADA Compliance- Provide pedestrian accessible pathway	218	R0.20/L0.90	In Monterey County in the City of Seaside from Del Monte Blvd to Freemont Blvd	Mike Lew (805) 549-3227
1G960	Collision Reduction- Traffic Signal Upgrades for Pedestrian Enhancements	VAR	VAR	Various routes in Monterey County	Mike Lew (805) 549-3227

Note: For project-specific questions, contact the corresponding project manager.
 For general PID program & planning questions contact Garin Schneider at (805) 503-3640

ATTACHMENT 2
 February 2017



Monterey County 2018 SHOPP Candidate

EA	Category - Project Description	Route	Postmile	Project Location	Project Manager
1H490	Bridge- Replace Bridge Rail	1	43.1	In Monterey County near Big Sur at Castro Canyon Bridge (44-35)	Ken Dostalek (805) 549-3133
1H800	Bridge- Replace Bridge Rail	1	62.97	In Monterey County near Big Sur at Garrapata Creek (44- 18)	Carla Yu (805) 549-3749
1J040	Zero Emission Vehicle -Install ZEV fast Charging Stations	101	3.1 & 5.1	In San Luis Obispo and Monterey County at Camp Roberts and Sandon Rest Areas	Aron Henkel (805) 549-3084
1H020	Roadside Safety Improvement- Upgrade wastewater treatment system for the use of recycled water and drinking water treatment to current standards	101	R2.9/R5.3	In Monterey County at the Camp Roberts Northbound and Southbound Safety Roadside Rest Areas	Carla Yu (805) 549-3749

Note: For project-specific questions, contact the corresponding project manager.
For general PID program & planning questions contact Garin Schneider at (805) 503-3640

ATTACHMENT 2
February 2017



Monterey County

2020 SHOPP Candidate

EA	Category - Project Description	Route	Postmile	Project Location	Project Manager
1K020	Major Damage- Permanent Restoration- Remove landslide rock and soil and restore roadway.	1	8.5/9.2	In Monterey County near Gorda 0.6 mile north of Alder Creek Bridge	Joe Erwin (805) 549-3792
1K090	Major Damage- Permanent Restoration- Remove landslide rock and soil and restore roadway.	1	21.75	In Monterey County near Lucia 0.35 mile north of Pitkin's Bridge	Ken Dostalek (805) 549-3133
1K000	Drainage system restoration	1	22.6/31.7	In Monterey County at various locations from .4 mile south of Lucia to .5 mile south of John Little State Reserve	Ken Dostalek (805) 549-3133
1J990	Drainage system restoration	1	23.2/43.8	In Monterey County from .1 mile north of the San Luis Obispo/Monterey County Line to 2.8 miles south of Big Sur	Ken Dostalek (805) 549-3133
1J870	Drainage system restoration, bridge rail improvements and count station Improvements	1	26.9/38.3	On Route 1 in Monterey County from 1.0 mile north of Vicente Creek Bridge to 1.0 mile south of Sycamore Draw Bridge.	Ken Dostalek (805) 549-3133
1K010	Major Damage- Permanent Restoration- Remove landslide rock and soil and restore roadway.	1	27.5/27.7	In Monterey County near Lucia 0.8 mile south of Big Creek Bridge	Ken Dostalek (805) 549-3133
1K080		1	45.4/45.8	In Monterey County in Big Sur at Pfeiffer Canyon Bridge	David Silberberger (805) 549-3798

Note: For project-specific questions, contact the corresponding project manager.
 For general PID program & planning questions contact Garin Schneider at (805) 503-3640

ATTACHMENT 2
February 2017

EA	Category - Project Description	Route	Postmile	Project Location	Project Manager
1K050		1	55.7/55.9		Carla Yu (805) 549-3749
1J880		68	0.2/15.7		David Silberberger (805) 549-3798
1K150		68	1.13/20.43		Mike Iew (805) 549-3227
1J460		68	2.7/3.2 3.47/3.74		Aaron Henkel (805) 549-3084
1J890		101	R28.23/100.3		Aaron Henkel (805) 549-3084

Note: For project-specific questions, contact the corresponding project manager.
For general PID program & planning questions contact Garin Schneider at (805) 503-3640

ATTACHMENT 2
February 2017



Monterey County

2020 SHOPP Candidate

EA	Category - Project Description	Route	Postmile	Project Location	Project Manager
1K020	Major Damage- Permanent Restoration- Restore roadway and facilities.	1	8.5/9.2	In Monterey County near Gorda 0.6 mile north of Alder Creek Bridge	Joe Erwin (805) 549-3792
1K090	Major Damage- Permanent Restoration- Restore roadway and facilities.	1	21.75	In Monterey County near Lucia 0.35 mile north of Pitkin's Bridge	Ken Dostalek (805) 549-3133
1K000	Drainage system restoration	1	22.6/31.7	In Monterey County at various locations from .4 mile south of Lucia to .5 mile south of John Little State Reserve	Ken Dostalek (805) 549-3133
1J990	Drainage system restoration	1	23.2/43.8	In Monterey County from .1 mile north of the San Luis Obispo/Monterey County Line to 2.8 miles south of Big Sur	Ken Dostalek (805) 549-3133
1J870	Drainage system restoration, bridge rail improvements and count station Improvements	1	26.9/38.3	On Route 1 in Monterey County from 1.0 mile north of Vicente Creek Bridge to 1.0 mile south of Sycamore Draw Bridge.	Ken Dostalek (805) 549-3133
1K010	Major Damage- Permanent Restoration- Restore roadway and facilities.	1	27.5/27.8	In Monterey County near Lucia 0.8 mile south of Big Creek Bridge	Ken Dostalek (805) 549-3133

Note: For project-specific questions, contact the corresponding project manager.
 For general PID program & planning questions contact Garin Schneider at (805) 503-3640

ATTACHMENT 2
February 2017

EA	Category - Project Description	Route	Postmile	Project Location	Project Manager
1K080	Major Damage- Permanent Restoration- Environmental mitigation and Erosion control and restore roadway and facilities.	1	45.4/45.8	In Monterey County in Big Sur at Pfeiffer Canyon Bridge	David Silberberger (805) 549-3798
1K050	Major Damage- Permanent Restoration- Restore roadway and facilities.	1	55.7/55.9	In Monterey County near Big Sur 0.1 mile south of Little Sur River Bridge	Carla Yu (805) 549-3749
1J880	Drainage system restoration- Lighting and Count Station Improvements	68	0.2/15.7	In Monterey County on SR 68 west of Sunset Dr. to Toro Park undercrossing.	David Silberberger (805) 549-3798
1K150	ADA Improvements	68	1.13/20.43		Mike lew (805) 549-3227
1J460	Safety Improvements	68	2.7/3.2 3.47/3.74		Aaron Henkel (805) 549-3084
1J890	Drainage system restoration- Roadside Safety and Overhead Sign Improvements	101	R28.23/100.3		Aaron Henkel (805) 549-3084

Note: For project-specific questions, contact the corresponding project manager.
For general PID program & planning questions contact Garin Schneider at (805) 503-3640

ATTACHMENT 2

February 2017