



# SURF!

## Busway & Bus Rapid Transit Project

April 26, 2023

Presented to: Transportation Agency for Monterey County

By: Monterey-Salinas Transit

Carl Sedoryk, General Manager/CEO



# OVERVIEW

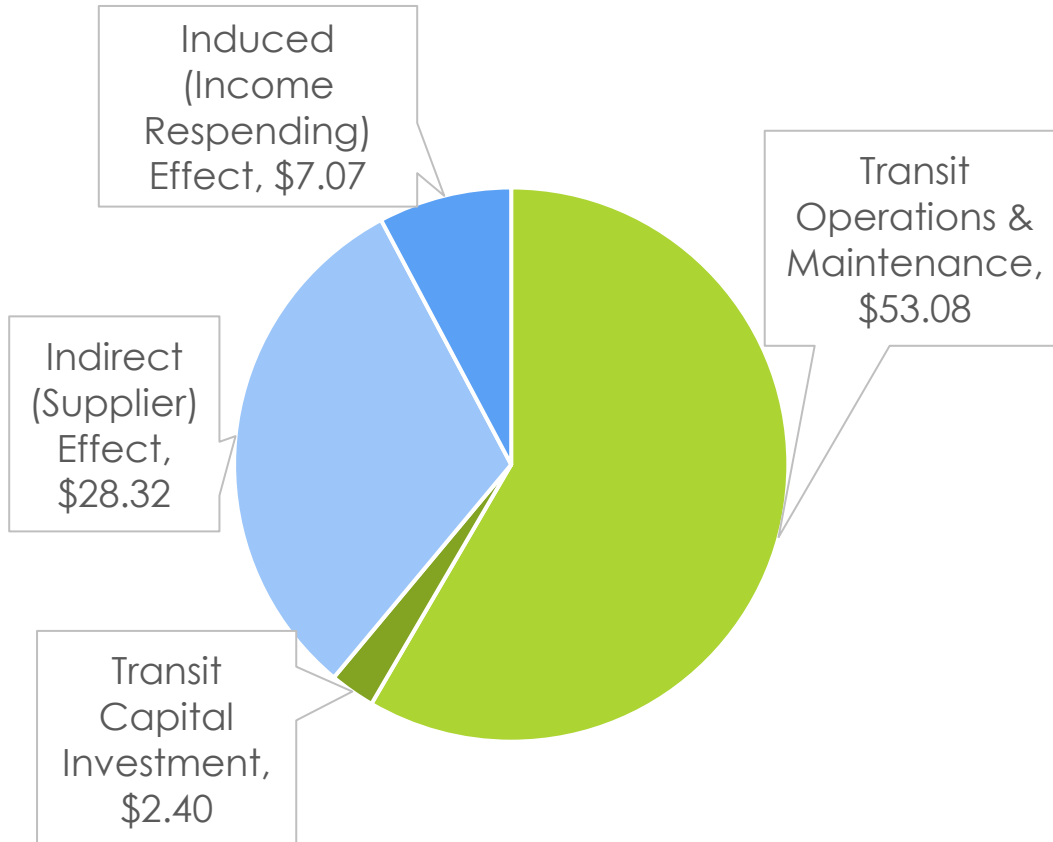
- a. Bus Rapid Transit and Regional Vision
- b. History and Background
- c. SURF! Project, Community Benefits, and Support
- d. Transit Investment and Schedule

# MONTEREY-SALINAS TRANSIT IN 2022

- ▶ By the numbers:
  - ▶ 1.9 million fixed-route and ADA RIDES passengers
  - ▶ 33 transit lines within 159 square miles
  - ▶ \$55.48 million operating and capital budget
  - ▶ 232 direct employees



## MST ECONOMIC IMPACT (\$90.87M)



# TRANSIT IMPACT TO LOCAL ECONOMY

FY2023 Budget

# BUS RAPID TRANSIT

- ▶ Exclusive bus-only lanes
- ▶ Frequent service
- ▶ Level boarding, faster fare payments
- ▶ Traffic signal prioritization
- ▶ Branded route/service
- ▶ Decreased travel time



## REGIONAL VISION:

Connecting communities.

Creating opportunity.

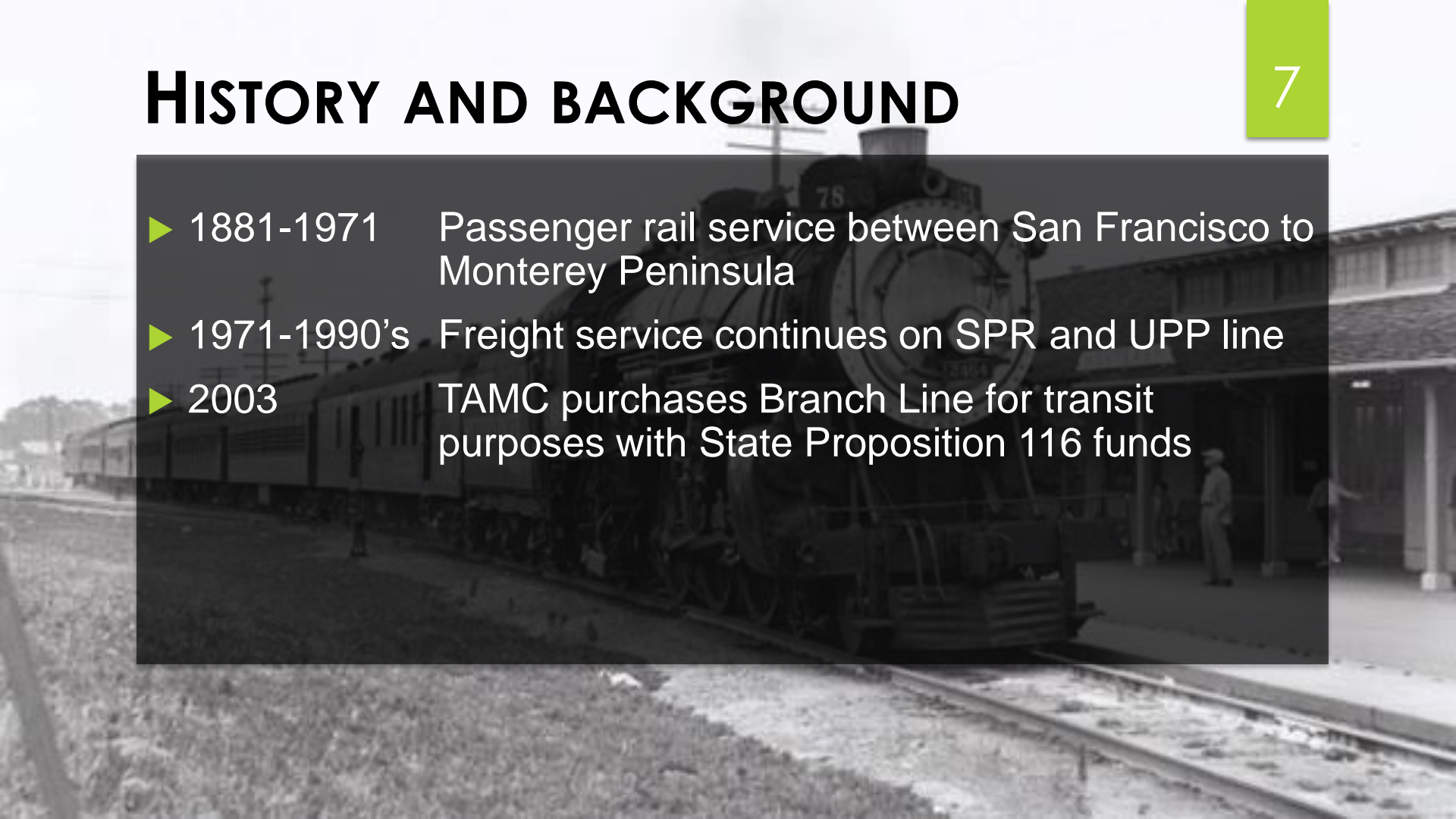
Being kind to our planet.



# HISTORY AND BACKGROUND

7

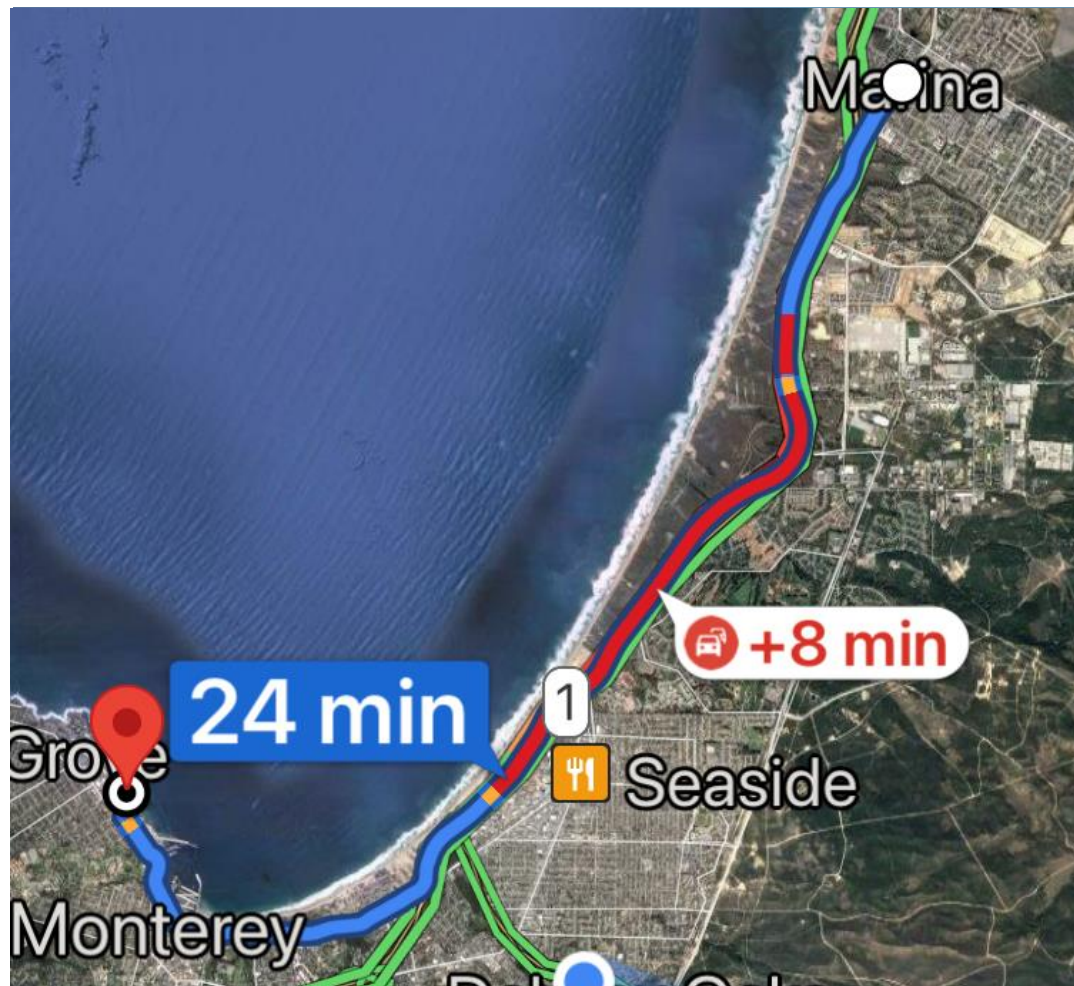
- ▶ 1881-1971 Passenger rail service between San Francisco to Monterey Peninsula
- ▶ 1971-1990's Freight service continues on SPR and UPP line
- ▶ 2003 TAMC purchases Branch Line for transit purposes with State Proposition 116 funds



# HISTORY AND BACKGROUND

- ▶ 2014 TAMC supports Bus Rapid Transit on Monterey Branch Line
- ▶ 2016 Measure X approved with rapid bus in the corridor project, voter support
- ▶ 2018 MST Monterey Bay Area Feasibility Study of Bus on Shoulder Operations on State Route 1 and the Monterey Branch Line
  - ▶ Branch line alternative is the stronger performer compared to other options
- ▶ 2022- 23 **FULLY FUNDED!** MST receives \$49.6M in State/Federal funding





## Typical Traffic Delay

(August 2021)



MST bus

August 2021

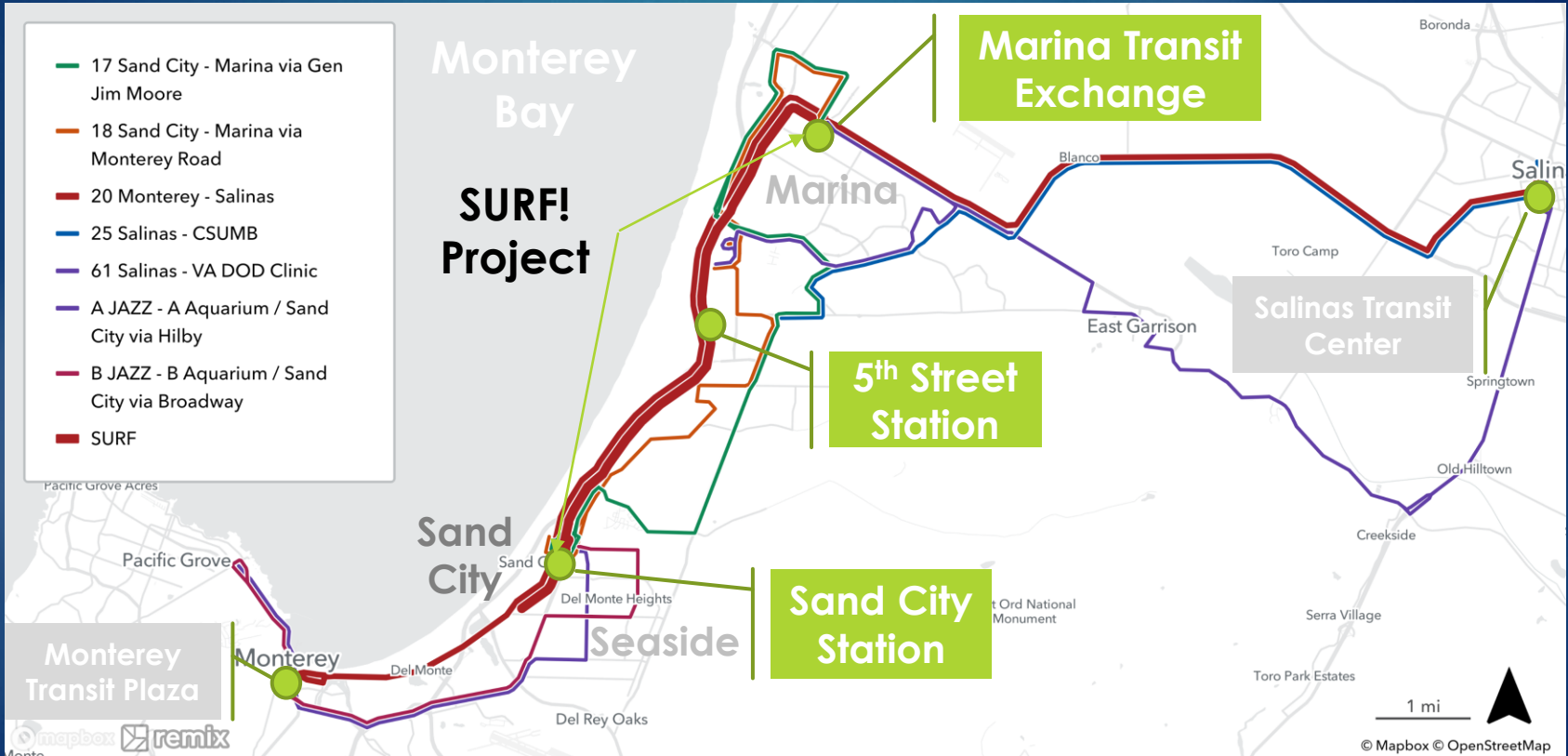
# SURF! PROJECT

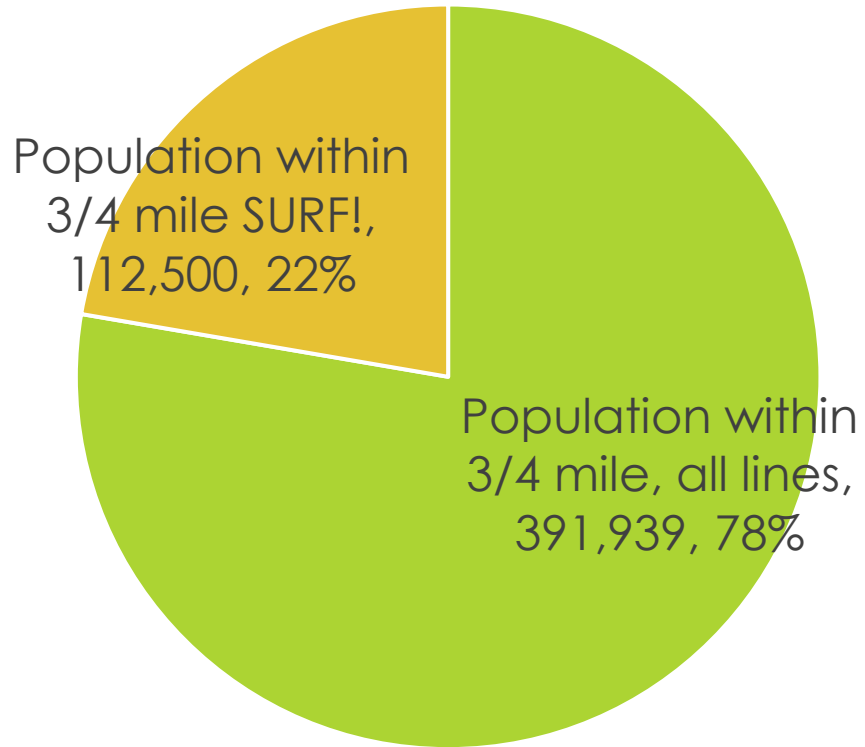


## KEY PROJECT COMPONENTS

- ▶ Transit service to/from Salinas and Monterey Peninsula
- ▶ Exclusive busway between Marina and Sand City/Seaside
- ▶ Transit signal prioritization
- ▶ 1+ miles of new bicycle and pedestrian trails
- ▶ New mobility hub and new bus stops
- ▶ Roundabout at California and Highway 1

# TRANSIT SERVICE MAP





## POPULATION SERVED BY TRANSIT

# SURF! DEMOGRAPHIC IMPACT

% of people living with a disability	~11%
% of people who are 65+	~14%
Veterans	~5,800
% of people in poverty	~13%
% of people who are non-White or of Hispanic / Latino origin (Census 2020)	~64%
% of workers who take public transit to work	~2%
Jobs within $\frac{3}{4}$ mile	39,100

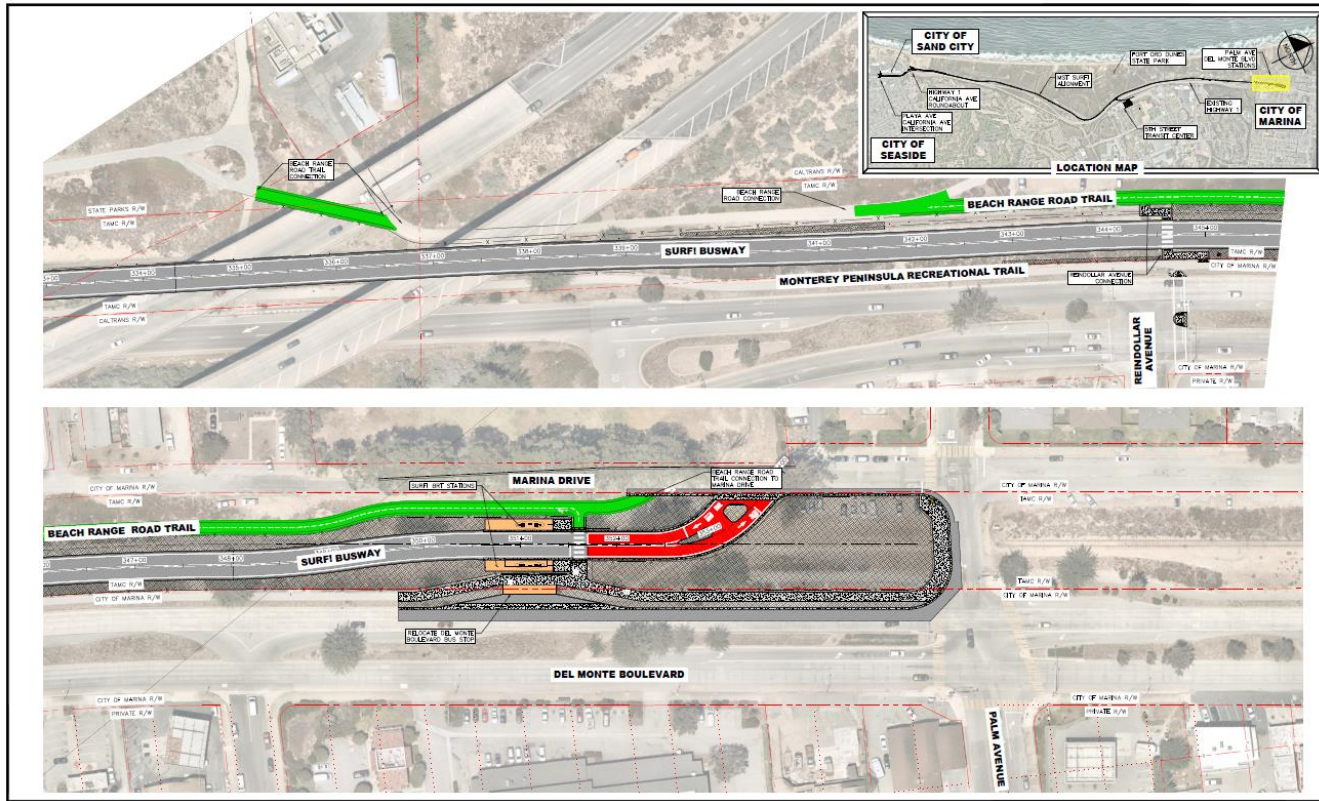




# Project Video Simulation

<https://vimeo.com/790648105/66a6072935>

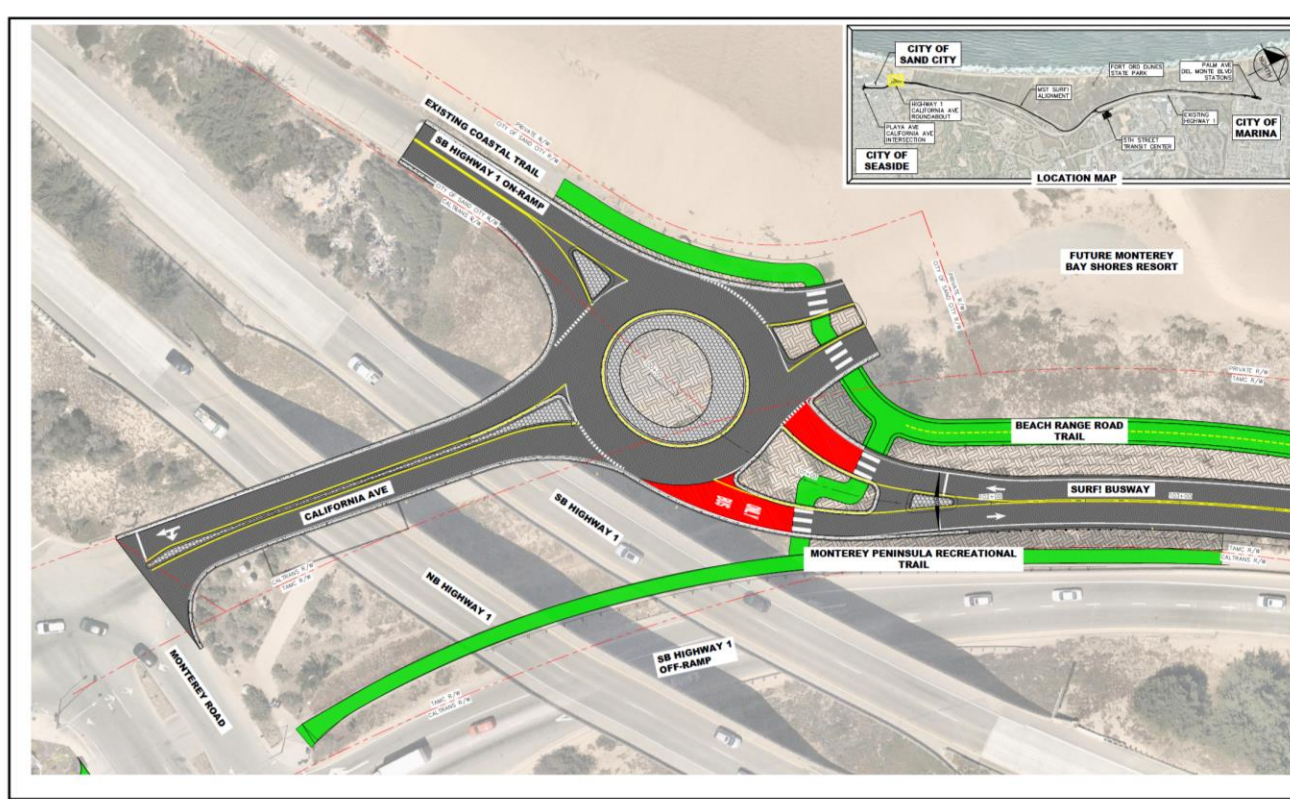
# Palm/Reindollar/Del Monte (Marina)





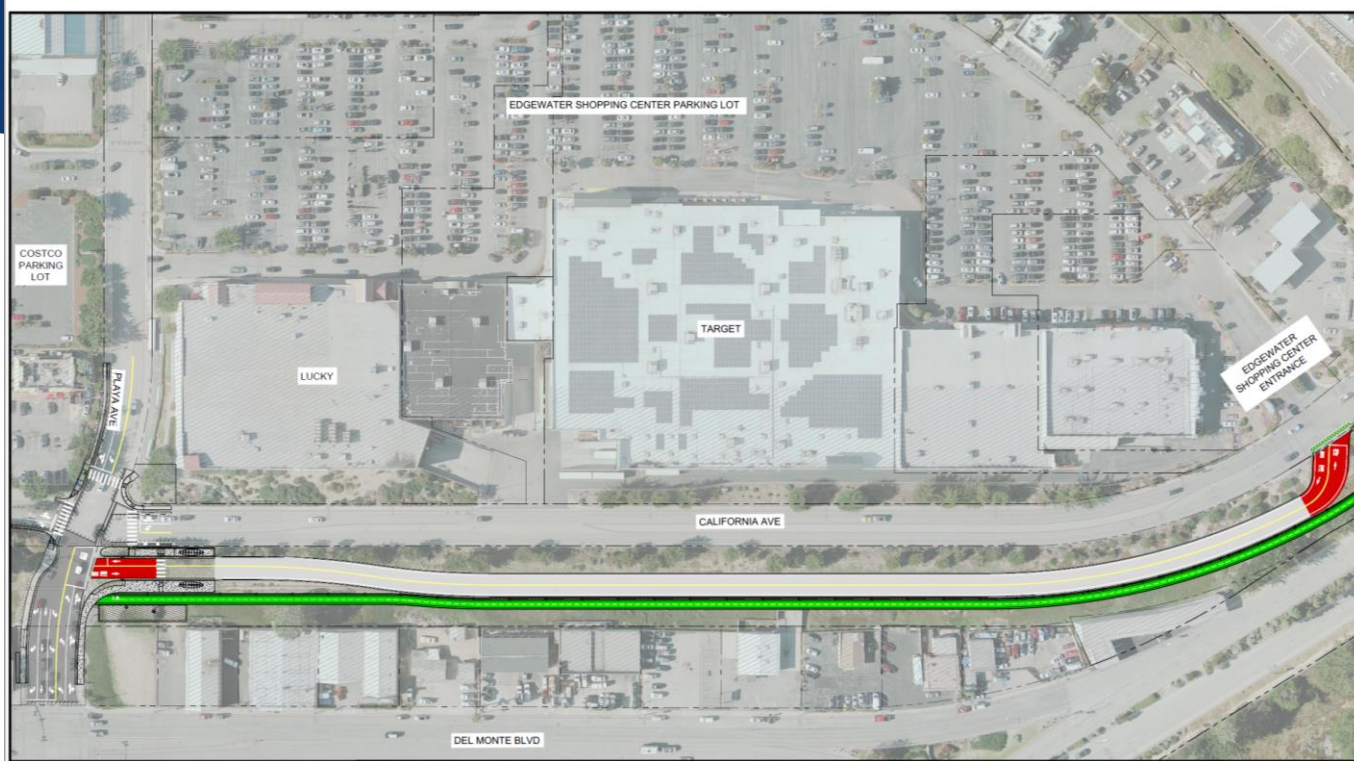
# CALIFORNIA/FREMONT (SEASIDE/SAND CITY)

20



# CALIFORNIA TO PLAYA (SEASIDE/SAND CITY)

21



Kimley»Horn

April 2023



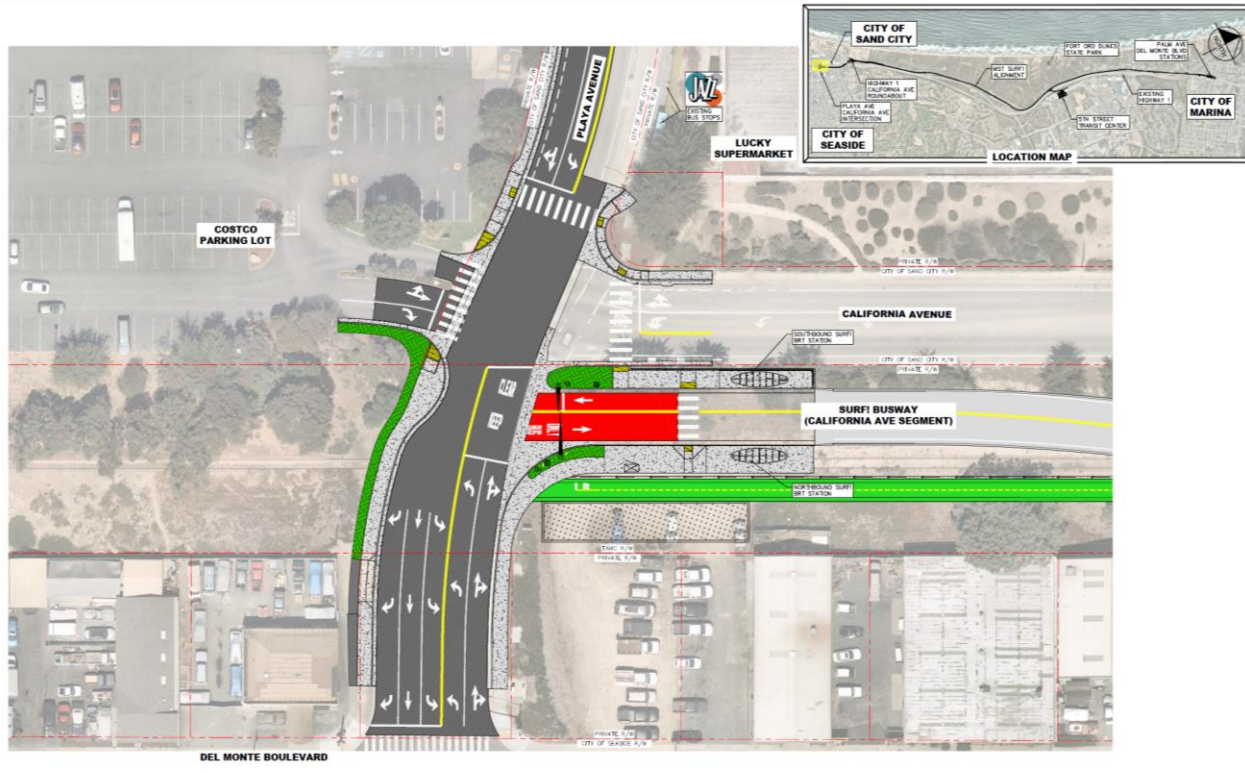
GRAPHIC SCALE IN FEET  
0 25 50 100

MST SURF! BRT PROJECT  
CALIFORNIA AVE/PLAYA AVE TO EDGEWATER SHOPPING CENTER



# CALIFORNIA/ PLAYA (SEASIDE/SAND CITY)

22



# CONNECTING COMMUNITIES



- ▶ Provides transit for seniors, persons with disabilities, veterans, and low-income residents
  - ▶ Transit avoids Highway 1 traffic congestion
  - ▶ Time savings using transit
  - ▶ Frequent service with more options, every 15 minutes

# CREATING OPPORTUNITY

- ▶ Important for thriving communities
  - ▶ Uses skilled and trained workforce
  - ▶ Provides access to employment, education, and healthcare for communities with low income and low car ownership
  - ▶ Increases opportunities for HCD funding





# BEING KIND TO OUR PLANET



- ▶ Reduces air pollution
  - ▶ Lowers GHG emissions = 1,518 acres of forest every year
  - ▶ Reduces traffic by 544,582 trips every year
  - ▶ Lowers vehicle miles traveled (VMT) by 2.7M every year
  - ▶ Uses only zero-emissions buses, cleaner and quieter

# SUPPORTERS

Assemblymember Robert Rivas

Senator John Laird

CA Transportation Commission

State Parks

Caltrans

CHISPA

LandWatch

Blue Zones

City of Marina

City of Seaside

Sand City

City of Monterey

Fire Chiefs

Monterey Bay Aquarium

Monterey Peninsula and Salinas  
Valley Chambers

# WHAT PEOPLE ARE SAYING

- ▶ **Over 100 meetings, 2,500 participants, and counting**
- ▶ *"Public transportation brings a community together - more buses is a good thing!"*
- ▶ *"With the new building projects in the area, we need this project."*
- ▶ *"This infrastructure needs to be done. We are falling behind as a country."*
- ▶ *"Excellent idea! [SURF!] seems much more feasible than rail and beneficial to all demographics. I hope this concept can come to fruition at some point in the near future!"*

Est. construction cost: \$52.7 M

## PROJECT BUDGET

FULLY FUNDED - \$66.1 M

## ECONOMIC IMPACT

JOBS CREATED: **661-858**

ECONOMIC IMPACT: **\$330 M**

- **TAMC Measure X - \$15 M**
- State Local Partnership - \$100,000
- State earmark - \$2.5 M
- State TIRCP - \$25 M
- Federal \$69,000
- Federal CIG \$22.1 M
- MST Budget \$1.3 M

TOTAL PROJECT COST: **\$66.1 M**

*\*ESCALATED TO YEAR OF CONSTRUCTION*

# PROJECT SCHEDULE

Ongoing Community Participation and Outreach

## Complete

- CA and Federal Environmental
- 35% Design
- Mitigation Plans



## Current

- Permitting
- 65% Design to Final Design
- CM/GC
- Mitigation Programming



## 2024-2026

- Construction 18-24 months
- Begin service 2026



# QUESTIONS