



# FORTAG

## California Avenue Segment

→ Overview & Updates

January 8, 2025



# Project Partners



# Pathway for Today's Meeting



FORTAG: Overall program overview

Where we've been and where we're going

A look at the California Avenue Segment

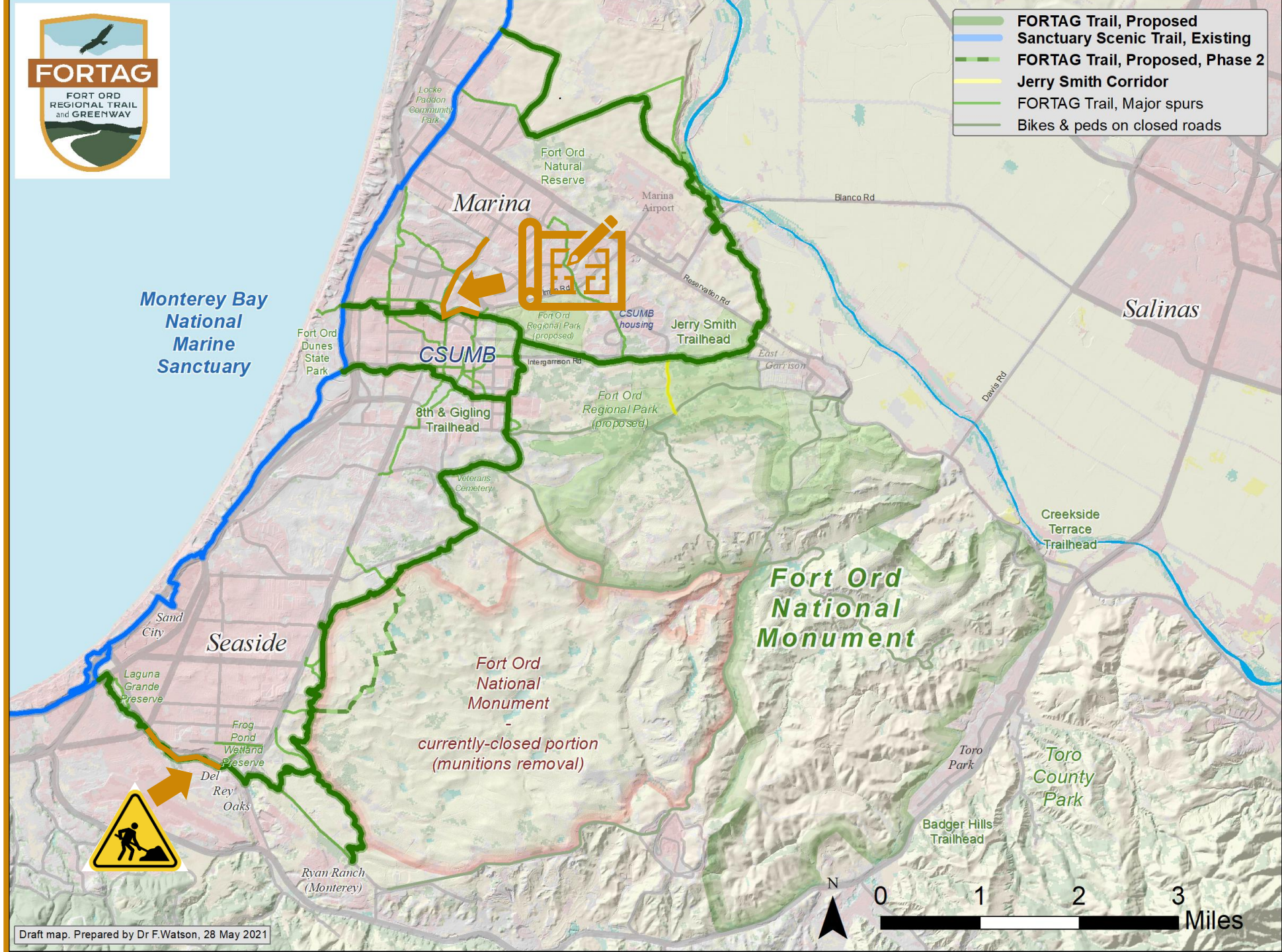
Community enhancements

Pathway moving forward

Questions & Answers

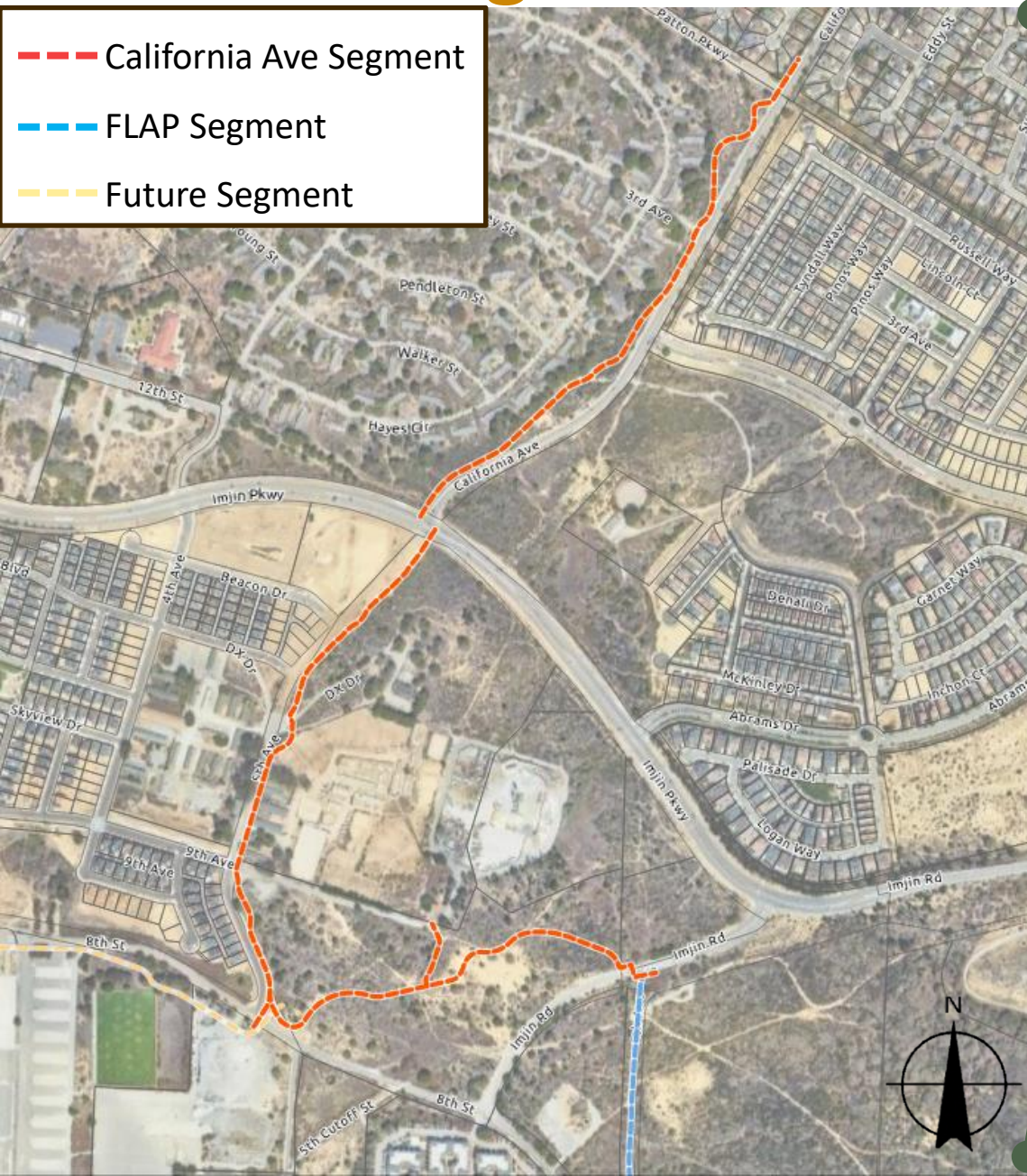
# **FORTAG: Overall program overview**

# FORTAG: The bigger picture



# FORTAG: Segments currently in design

- California Ave Segment
- FLAP Segment
- Future Segment



**Where we've been and where  
we're going**

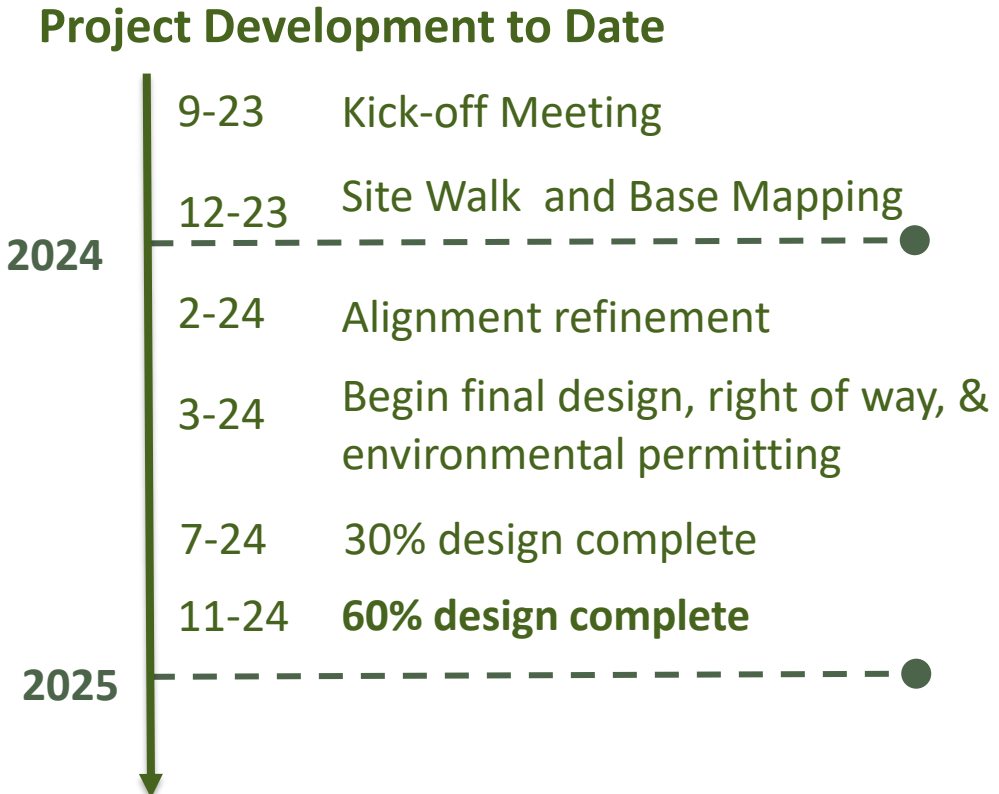
# Where we've been:

## DEVELOPMENT OF THE FORT ORD REGIONAL TRAIL AND GREENWAY 2013-PRESENT





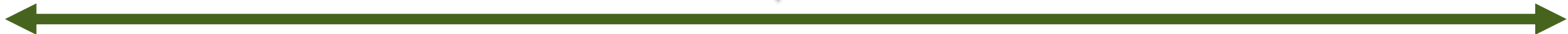
# Project Timeline



### Project Development Moving Forward



### Project Management & Stakeholder/Public Outreach



# FORTAG Segment 2 - California Avenue



CSUMB

8th Street

9th Street

Imjin Parkway

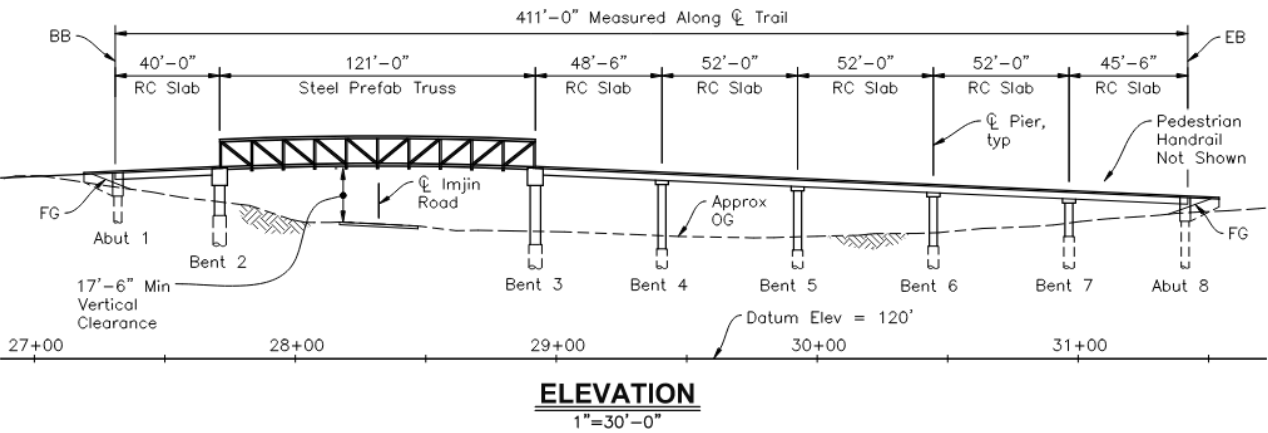
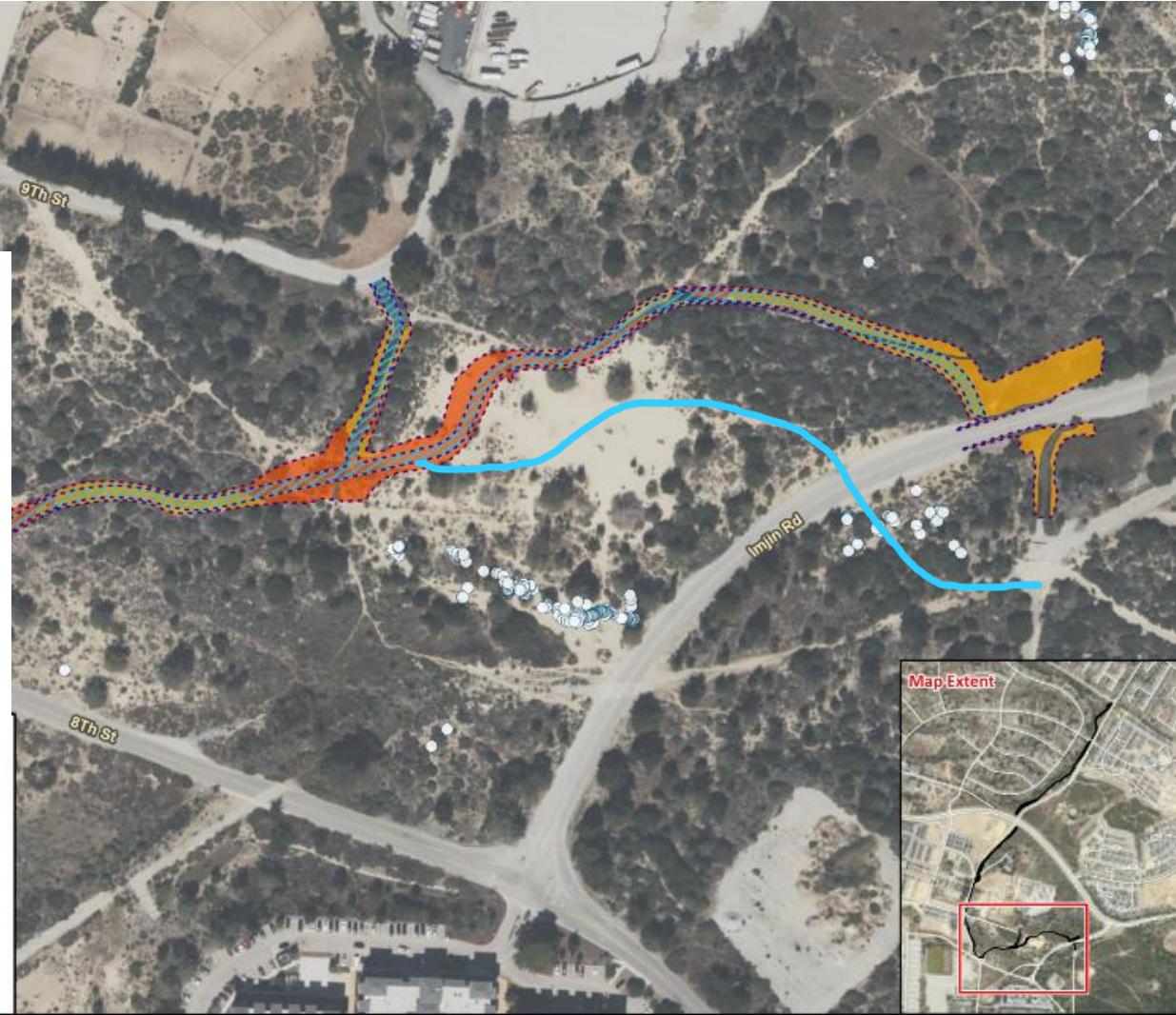
California Ave

Patton Parkway



# Refinement of 30% Design

- Address Monterey Gilia
- Factor Soil Conditions
- Value Engineer Pedestrian Bridge
- Modify Open Space Alignment



○ Monterey Gilia Occurrences

**Impact Areas**

- Permanent Impact (2.8 ac)
- Temporary Impact (4.2 ac)

**Vegetation Community Suitability**

- High (0.9 ac)
- Marginal (4.5 ac)
- None (1.6 ac)

0 120 240 Feet

N

# A look at the California Avenue Segment

# Safe Crossings



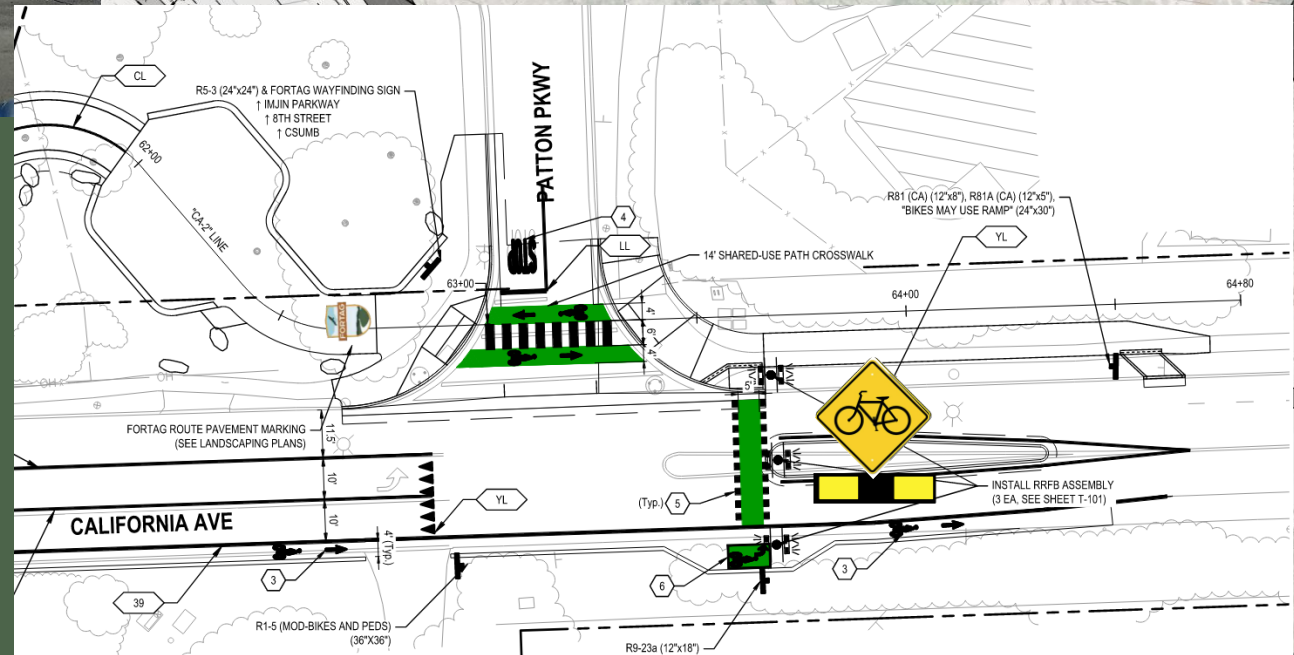
# Rapid Flashing Beacon

## California Avenue at 8th Street

Connect to CSUMB and  
path along 8th

## California Avenue & Patton Parkway

Connect to Class II

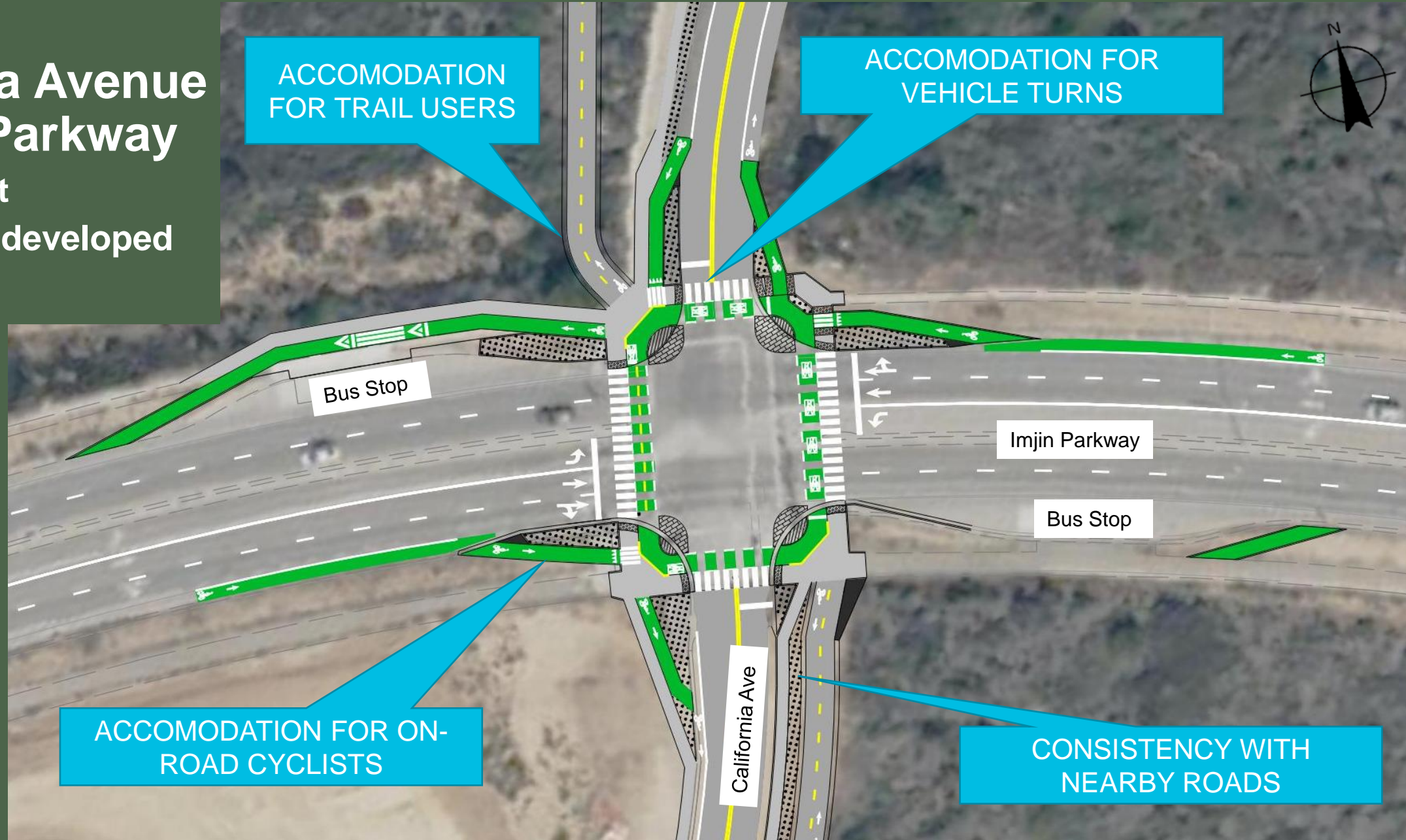


# Protected Intersection – Developer-Led Project

## California Avenue at Imjin Parkway

10% concept

Now further developed



# Protected Intersection






# Pedestrian Hybrid Beacon

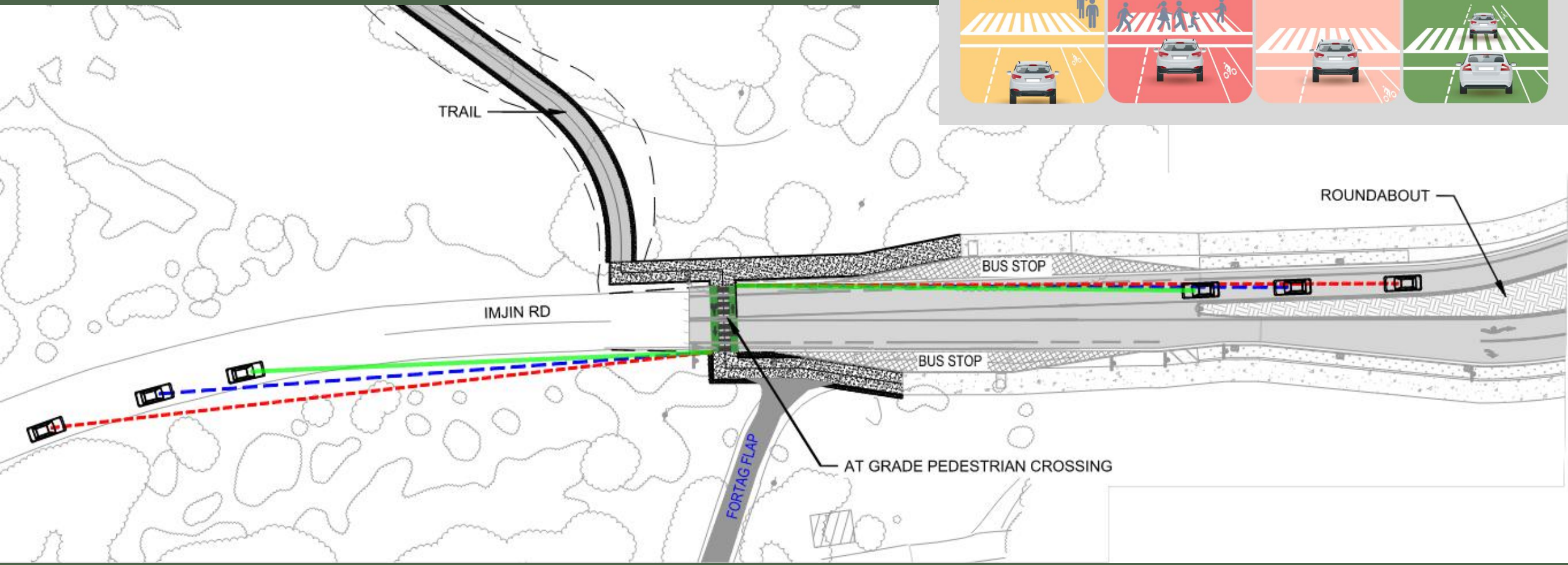
## Imjin Road Trail Crossing



**PEDESTRIAN HYBRID BEACON GUIDE**



FLASHING YELLOW	SOLID YELLOW	SOLID RED	FLASHING RED	DARK
<b>SLOW DOWN</b> PEDESTRIAN ACTIVATED BEACON WITH CROSSWALK PUSH BUTTON	<b>PREPARE TO STOP</b> PEDESTRIAN WAITING FOR WALK SIGNAL	<b>STOP</b> PEDESTRIAN IS CROSSING	<b>AFTER STOPPING</b> PROCEED WITH CAUTION ONLY IF THE CROSSWALK IS CLEAR	<b>PROCEED WITH CAUTION</b> BEACON STAYS DARK UNTIL ACTIVATED BY ANOTHER PEDESTRIAN



# Pedestrian Hybrid Beacon

Existing  
Crossing at  
Marina Heights  
Drive  
Trail will connect!



# Community enhancements

# Using a “Theme” to create a sense of place

## What is an “amenity theme”?

- A suite of street furniture and surface finishes (*think bench, trash can, fence/screening, paving materials/colors, textures and artwork*) placed along the trail.

## How will the theme be applied?

- Using a combination of need, engineering judgment, context, and budget, various amenities will be placed along the trail.

## How was the FORTAG theme chosen?

- Public outreach and voting during design of the Canyon Del Rey segment

## What is the FORTAG theme?

- A blend of Rustic and Coastal elements

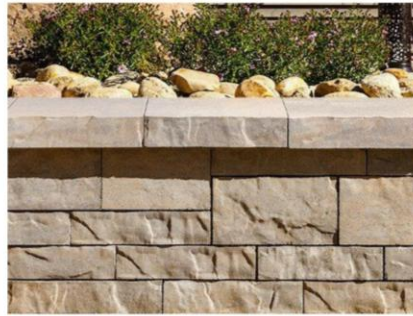
**Let's look!**

# Rustic

## SITE FURNISHING EXAMPLE IMAGES



## WALL MATERIALS EXAMPLE IMAGES



## RAILING / FENCE EXAMPLE IMAGES



## PAVING / SURFACES EXAMPLE IMAGES



# Coastal

## SITE FURNISHING EXAMPLE IMAGES



## WALL MATERIALS EXAMPLE IMAGES

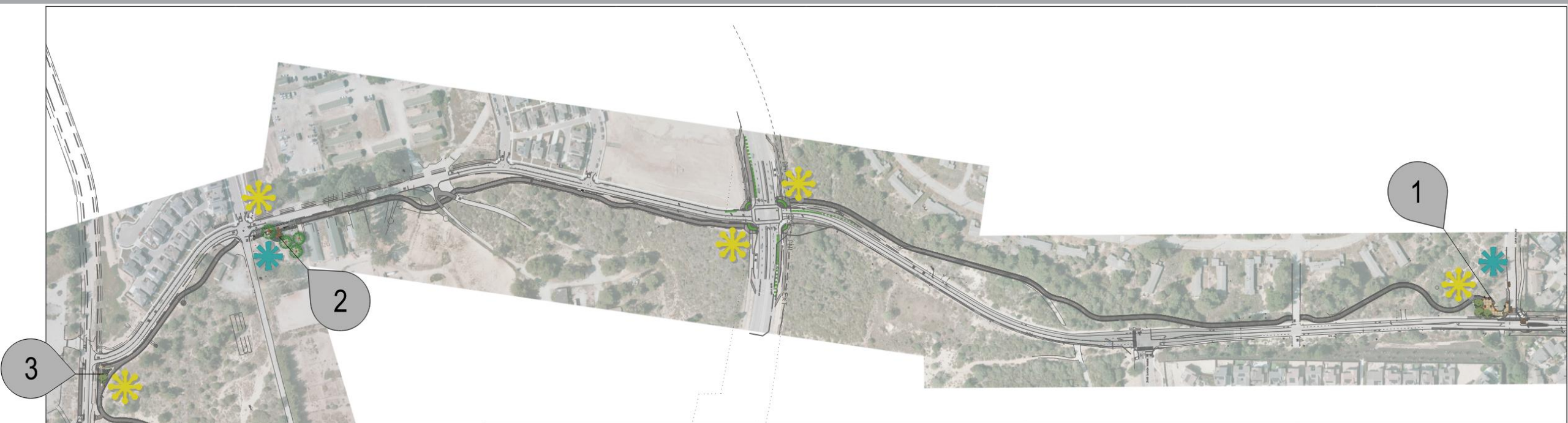


## RAILING / FENCE EXAMPLE IMAGES



## PAVING / SURFACES EXAMPLE IMAGES







### AMENITY AND REST STOP LOCATIONS

- 1** **PATTON PARKWAY/CALIFORNIA AVE.-FORTAG GATEWAY AND PLAZA**  
 BENCHES/SEATING - WAYFINDING SIGNAGE - CITY SIGNAGE - SEAT/RETAINING WALL STRUCTURES - SPECIALTY PAVING - HYDRATION STATION - BIKE RACKS - TRASH BIN - NEW PLANTING
- 2** **MARINA EQUESTRIAN CENTER REST NODE**  
 BENCHES - WAYFINDING SIGNAGE - INTERPRETIVE SIGNAGE - AT-GRADE WOOD DECKING - TRASH BIN - BIKE PARKING - SCREEN PLANTING - ACCESS TO EQUESTRIAN CENTER
- 3** **CALIFORNIA AVE. + 8TH ST. - TRANSITION NODE**  
 BENCH - TRASH RECEPTACLE - SIGNAGE OR ART OPPORTUNITY - WAYFINDING SIGNAGE - PLANTING
- 4** **HABITAT OVERLOOK NODE**  
 BENCHES - INTERPRETIVE SIGN - WAYFINDING SIGN - DECOMPOSED GRANITE PAVING - TRASH BIN
- 5** **IMJIN RD. CROSSING**  
 FORTAG PAVING MARKER/LOGO

### SIGNAGE TYPES

-  INTERPRETIVE SIGNAGE  
 TAKEOFF: 3
-  WAYFINDING SIGNAGE  
 TAKEOFF: 6



# California Avenue & Patton Parkway





# California Avenue & 9th Street



# California Avenue & 8th Street



# Open Space Between 8<sup>th</sup> Street & Imjin Road



**Pathway forward**

# What to expect next?

Be on the lookout for project update mailers and e-blasts!

## FORTAG General Website

<https://fortag.org/>

## Cal Ave Project Website

<https://www.tamcmonterey.org/fort-ord-regional-trail-greenway-california-avenue>

## Email Your Comments

[fortagcaliforniaave@publicinput.com](mailto:fortagcaliforniaave@publicinput.com)

**FORTAG**  
FORT ORD  
REGIONAL TRAIL  
and GREENWAY

**TAMC**  
TRANSPORTATION AGENCY FOR MONTEREY COUNTY

**CITY OF DEL REY OAKS**  
INCORPORATED 1960

### TRAIL FEATURES

IT'S MORE THAN A TRAIL! IN ADDITION TO THE SAFETY FEATURES, HERE ARE SOME NEW AMENITIES THAT ARE INCLUDED WITH THIS PROJECT:

- **MORE THAN JUST A SAFE ROUTE TO SCHOOL PROJECT!** Bike racks, lighted pathways, educational opportunities, and trash bins at key locations.
- **A NEW WAY TO INTERACT IN DRO.** A safe, accessible pathway that connects seven local parks and recreational amenities such as the Frog Pond, Work Memorial Park, the Butterfly Garden, and tennis courts.
- **THE TENNIS COURTS ARE GETTING A FACELIFT.** The trail realignment will reorient the tennis courts that will be restriped to add pickleball courts. This facelift preserves existing trees and saves \$26,000 in construction costs.
- **THE BUTTERFLY GARDEN BECOMES A REALITY.** The Butterfly Garden demonstration project was a success. This project builds a long-term site with permanent raised planters, a stabilized surface, an accessible planter, educational components, seating areas, a hydration station, bike racks, and more!
- **A CHANCE TO STOP AND ENJOY THE VIEWS.** Along the trail there will be multiple areas provided where you can stop, take a seat, and enjoy the natural environment around you.

*Butterfly Garden Rendering*

**Your address here!**

To learn more about FORTAG visit:

[www.fortag-canyondeley.com](http://www.fortag-canyondeley.com)

[www.tamcmonterey.org/fort-ord-regional-trail-greenway](http://www.tamcmonterey.org/fort-ord-regional-trail-greenway)

Kendall Flint, Outreach Task Manager  
[Kendall.Flint@dksassociates.com](mailto:Kendall.Flint@dksassociates.com)

**We are excited to invest in the  
community and see this through to  
the trail opening!**



**TAMC**  
TRANSPORTATION AGENCY FOR MONTEREY COUNTY

# Thank you!!

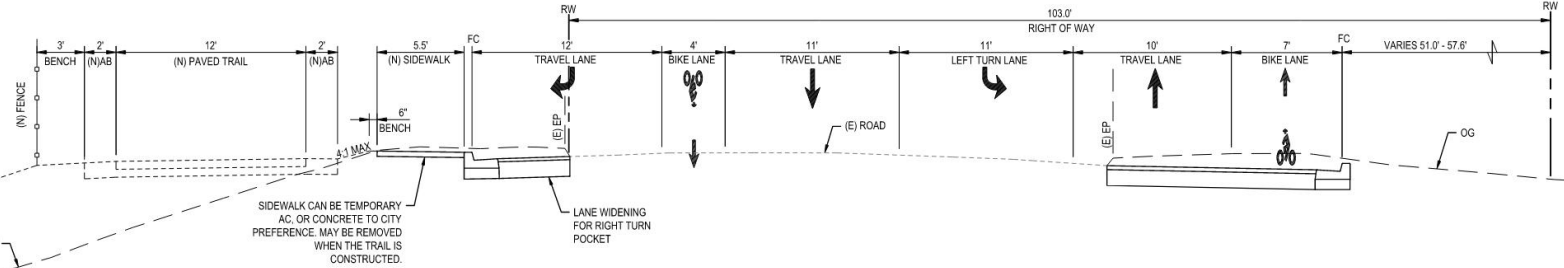
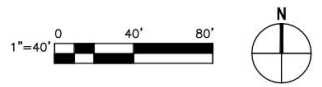
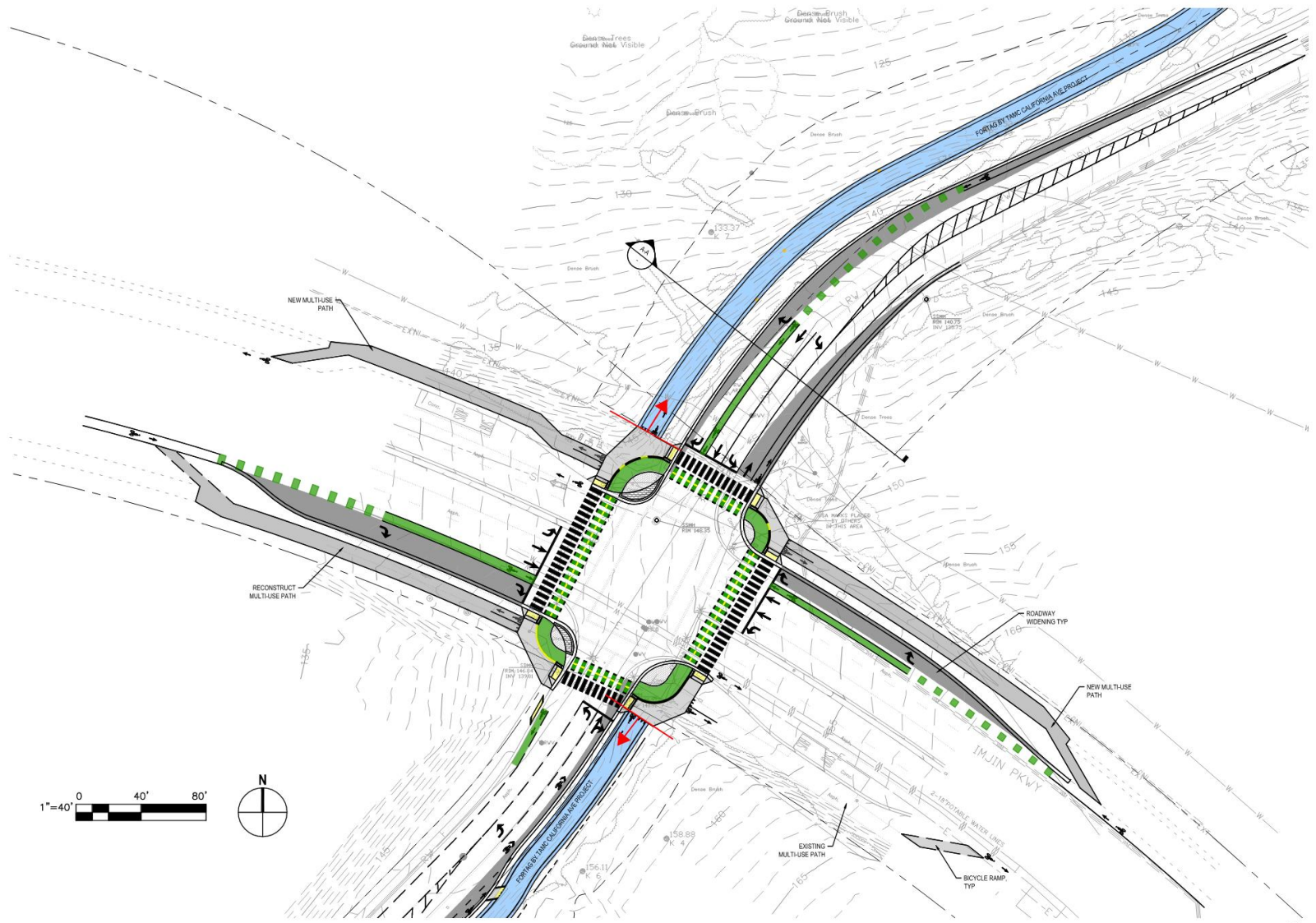
→ Project Website:  
<https://www.tamcmonterey.org/fort-ord-regional-trail-greenway-california-avenue>



# Questions & Answers







**SECTION A-A**