

# Pajaro Watsonville Multimodal Station Project



COMMUTER RAIL EXTENSION TO MONTEREY COUNTY PROJECT  
PAJARO / WATSONVILLE TRAIN STATION



# Today's Update

- Purpose & Need
- Scope
- Outreach
- Location Alternatives
- Notice of Preparation
- Scoping meetings
- Next Steps



# Project Purpose

- Expands transportation options
- Access to jobs, health care, education, shopping
- Reduces vehicle trips, emissions
- Serves underserved communities of Pajaro and Watsonville



# Project Overview

- Train service:
  - Amtrak Coast Starlight
  - Caltrain
- Bus service:
  - Monterey-Salinas Transit
  - Santa Cruz Metro
- Future:
  - Regional rail, Santa Cruz-Monterey
  - Long distance rail, San Jose-San Luis Obispo
- Passenger rail platform, ticket vending machines, shelters, lighting, landscaping



# Outreach to Stakeholders

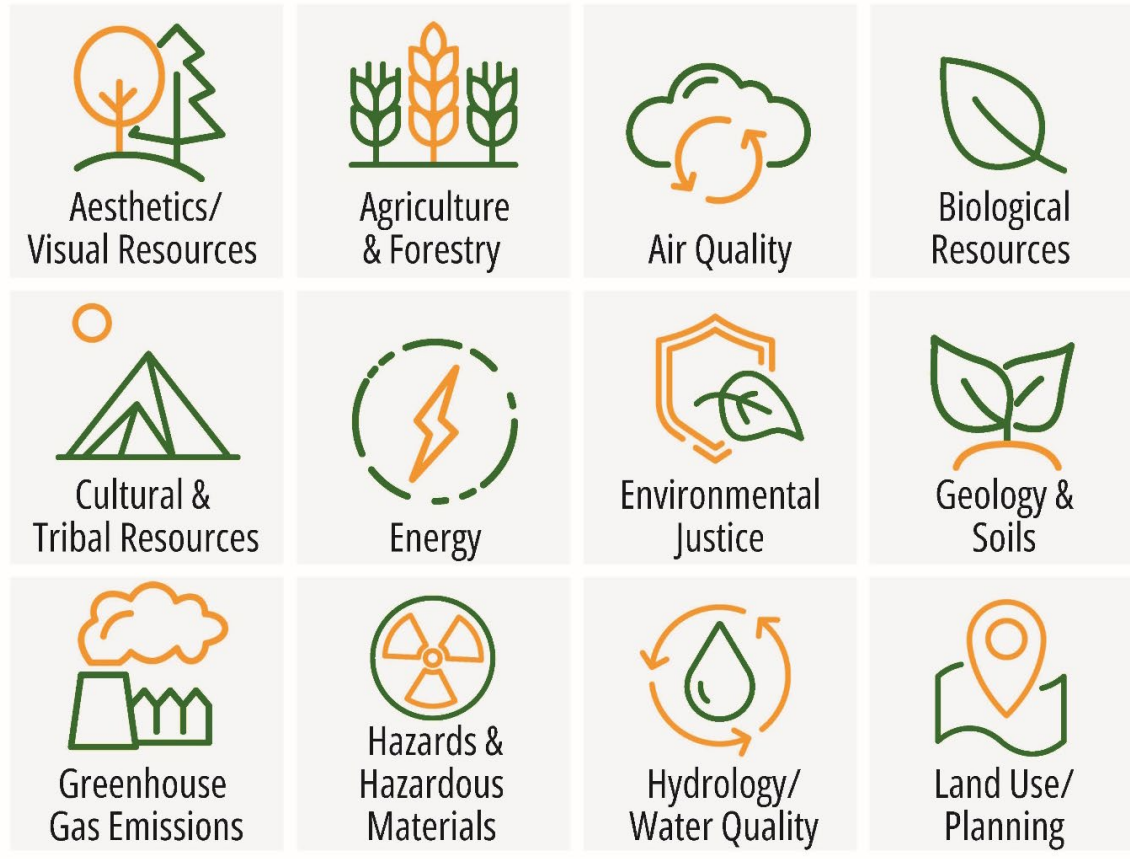


# Notice of Preparation & Scoping Meeting

- Introduce project alternatives
- Public comment
- Present Draft Environmental Document process, timeline, future public input opportunities



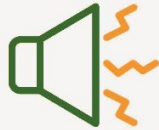
# Environmental Topics Considered



# Environmental Topics Considered (cont.)



Mineral  
Resources



Noise &  
Vibration



Population &  
Housing



Public services,  
Utilities &  
Service Systems



Recreation



Socioeconomics



Transportation  
Systems



Wildfire



# What We Heard

- Identify station location
- Concern for homes near station
- Safety
- Traffic
- Potholes
- Sidewalks
- Drainage
- Lighting



# Project Schedule

## ENVIRONMENTAL REVIEW PROCESS PHASE

### SCOPING (Fall 2024) ← WE ARE HERE

TAMC works with the public to decide what environmental topics should be studied in the environmental document. Includes public meeting and comment opportunity.

### DRAFT EIR (Fall 2025)

TAMC studies the environmental aspects of the project and shares it with the public to review and provide input. Includes public meeting and comment opportunity.

### FINAL EIR (Early 2026)

TAMC reviews and responds to comments from the public and prepares the final environmental report.

### DECISIONS (2026)

TAMC certifies EIR and issues decision on whether to move the Project forward.

This timeline shows the completion of the CEQA environmental review process. The NEPA environmental review will be completed after identification of a federal lead agency.

## PROJECT DESIGN PHASE

### FINAL DESIGN (2027)

Following completion of the environmental review process, TAMC will finalize Project design.

## CONSTRUCTION PHASE

### CONSTRUCTION BEGINS (2029)

Project Construction could begin as early as 2029.



# QUESTIONS?

**Alissa Guther,  
Transportation Planner**