



# Traffic System, Pedestrian, Bike Upgrades Citywide

## City of Monterey

Marissa Garcia



THE CITY OF  
**MONTEREY**

# Quick Monterey Facts



**56**  
Traffic  
Signals

Where did we go to work in 2017:



## City of Monterey Bicycle Facilities



**5.8** miles of Class I Facilities, Bike Path

**15.9** miles of Class II Facilities, Bike Lanes



**1.4** miles of Class III Facilities, Bike Route

**1.1** miles of Class IV Facilities, Protected Bike Lanes



Established 1770

More than  
**222**  
Lane Miles

Who uses our roadways?



The Monterey Peninsula  
Recreational Trail  
is so popular,  
**200+ bicyclists**  
used it during the  
lunch time hour!

### Did You Know?

During the 2018 Labor Day Holiday, over 1,400 pedestrians used Recreation Trail Crossing at the Municipal Wharf Parking Lot and Washington Street in one day!

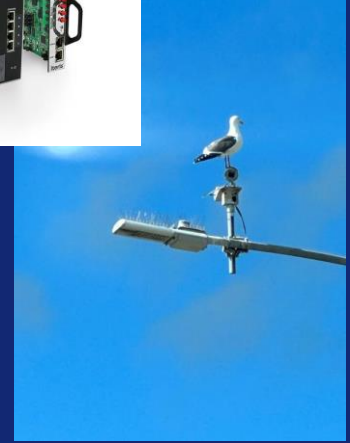


THE CITY OF  
**MONTEREY**

# Citywide Traffic Signals

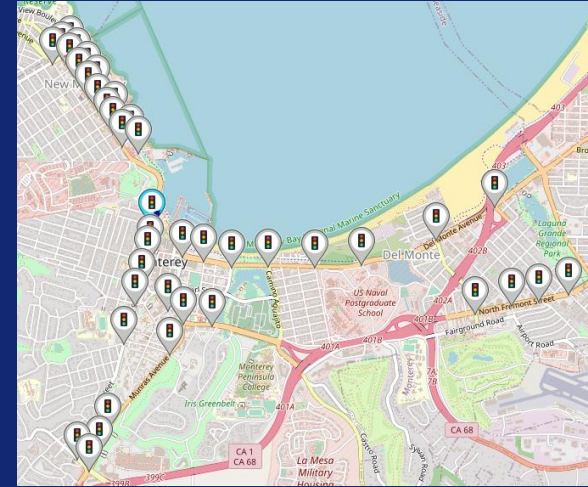


**56**  
Traffic  
Signals



# Adaptive Traffic Signal System

- The City's Adaptive Traffic Signal System is active on 6 of the City's 7 arterial corridors.
  - Completed: Lighthouse, Del Monte, N Fremont, Foam, Munras, Pacific
  - In Progress: Franklin
- 44 intersections on the system currently
- 51 of the 56 intersections will be on the system at the end

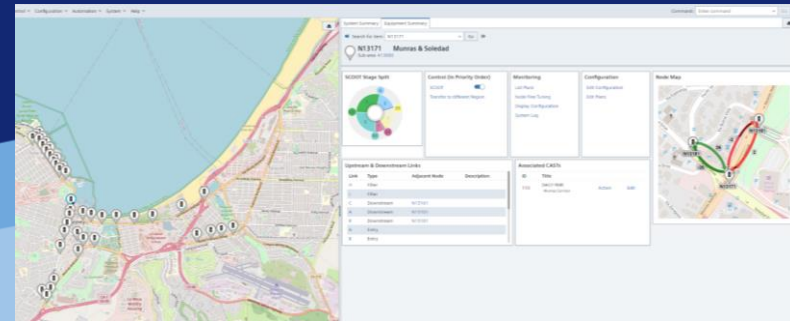


# Adaptive Traffic Signal System

- How does the Adaptive Traffic Signal Work?

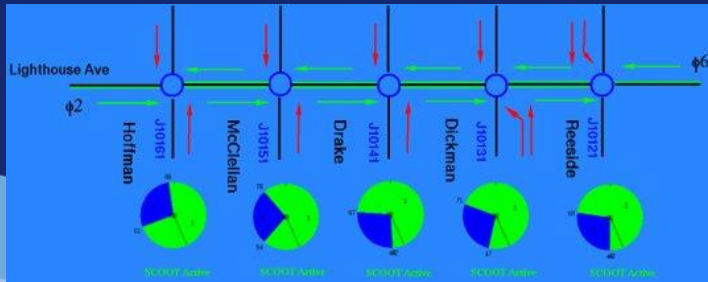
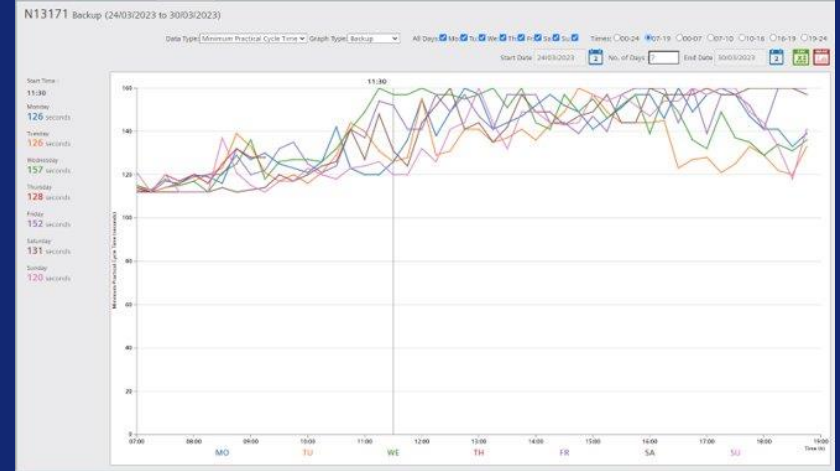
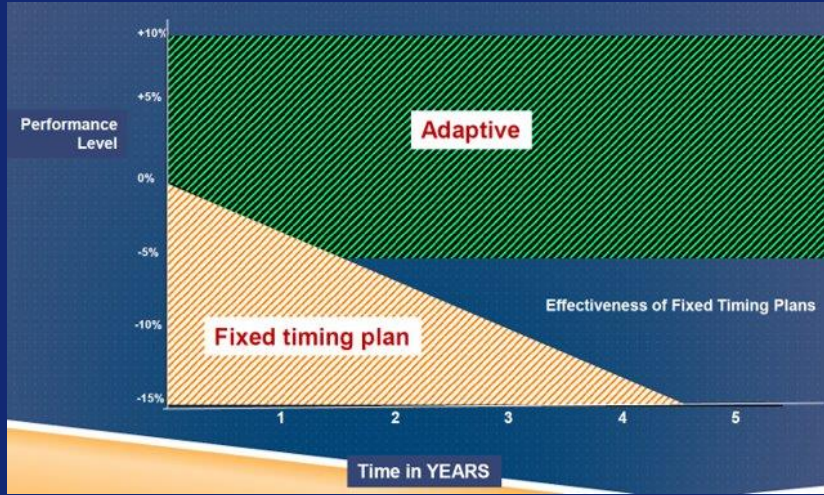


- With this information the traffic signal changes the cycle time, splits, and offsets between signals to manage the flow of vehicles as efficiently
- The signal system can change these every 2-3 minutes





# Adaptive Traffic Signal System



THE CITY OF  
**MONTEREY**

# Questions?



THE CITY OF  
**MONTEREY**